

003549

**PARTIAL BOUNDARY SURVEYS**

**JUN 29 1977**

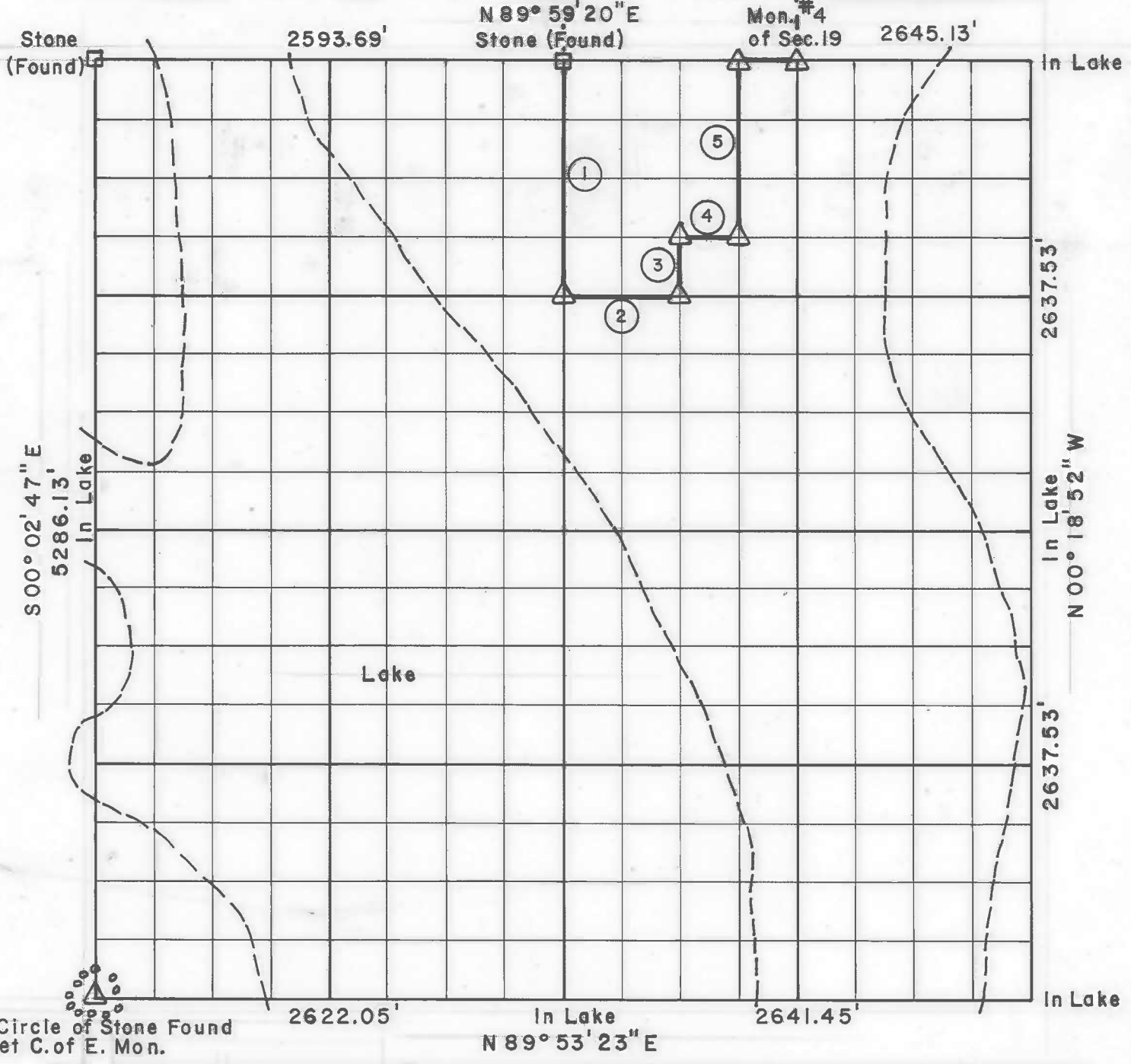
**TENKILLER FERRY LAKE**

ILLINOIS RIVER, OKLAHOMA

At 10<sup>10</sup> O'clock and recorded  
in Book 282 At Page 5-6  
ROMADELL HANNAH, County Clerk  
Deputy

Performed Under Contract Number DACW 56-77-C-0080

SEC. 30 , T - 14 - N , R - 22 - E COUNTY CHEROKEE



Course No.	Distance	Bearing	Course No.	Distance	Bearing
1	1320.17	S 00° 21' 15" E			
2	661.05	N 89° 58' 51" E			
3	329.96	N 00° 20' 39" W			
4	330.56	N 89° 59' 18" E			
5	989.73	N 00° 20' 21" W			

Field Book No. 4-308 Date April & June, 1977

**CERTIFICATE OF SURVEY**

HEREBY CERTIFY THAT THE ABOVE PLAT IS A TRUE AND CORRECT REPRESENTATION OF THE SURVEY MADE IN SECTION 30, T 14 N, R 22 E, CHEROKEE COUNTY, OKLAHOMA.

**REGISTERED ENGINEER ASSOCIATES, INC.**  
Under the Supervision of  
**EUGENE R. JARMON**  
U.S. ARMY ENGINEER DISTRICT, TULSA  
L.S. 246  
CORPS OF ENGINEERS

- LEGEND**
- △ MONUMENT
  - ORIGINAL CORNER
  - IRON PIN
  - \* COMPUTED DISTANCE

*Eugene R. Jarmou*  
REGISTERED LAND SURVEYOR L.S. 246

6

# TENKILLER FERRY LAKE ILLINOIS RIVER, OKLAHOMA

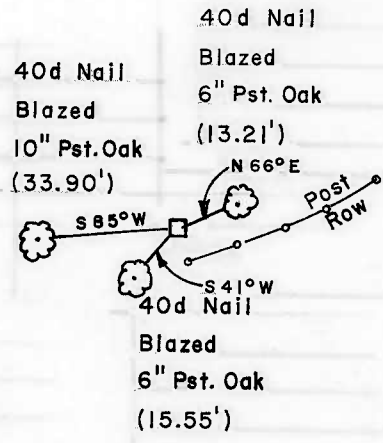
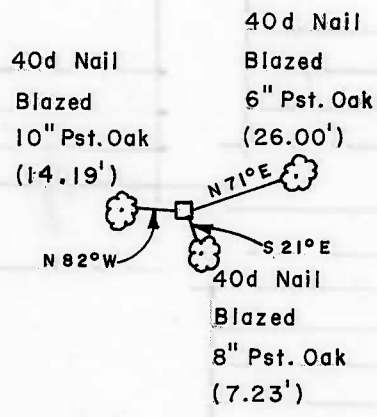
## SECTION AND QUARTER SECTION CORNER REFERENCES FOR

### SEC.-30,T14N,R22E CHEROKEE COUNTY

N.W. CORNER

NORTH 1/4 CORNER

N.E. CORNER



WEST 1/4 CORNER

EAST 1/4 CORNER



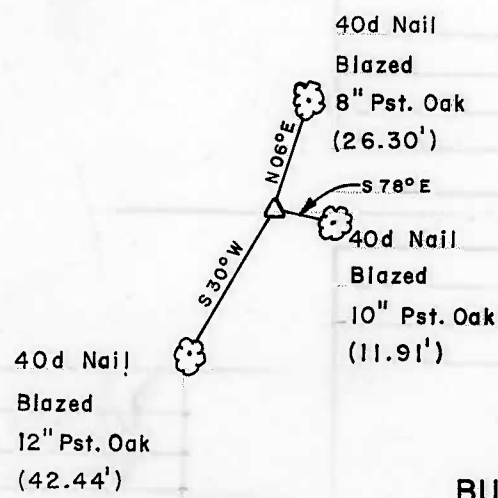
In + Lake

In + Lake

S.W. CORNER

SOUTH 1/4 CORNER

S.E. CORNER



In + Lake

In + Lake

BUTLER ASSOCIATES, INC.

Scale: 1" = 50'  
Date: APR. & JUNE 1977  
Field Book No. 4-308



LEGEND

- △ Monument
- Original Corner
- Iron Pin

*Eugene R. Janway*  
Registered Land Surveyor L.S. No. 246