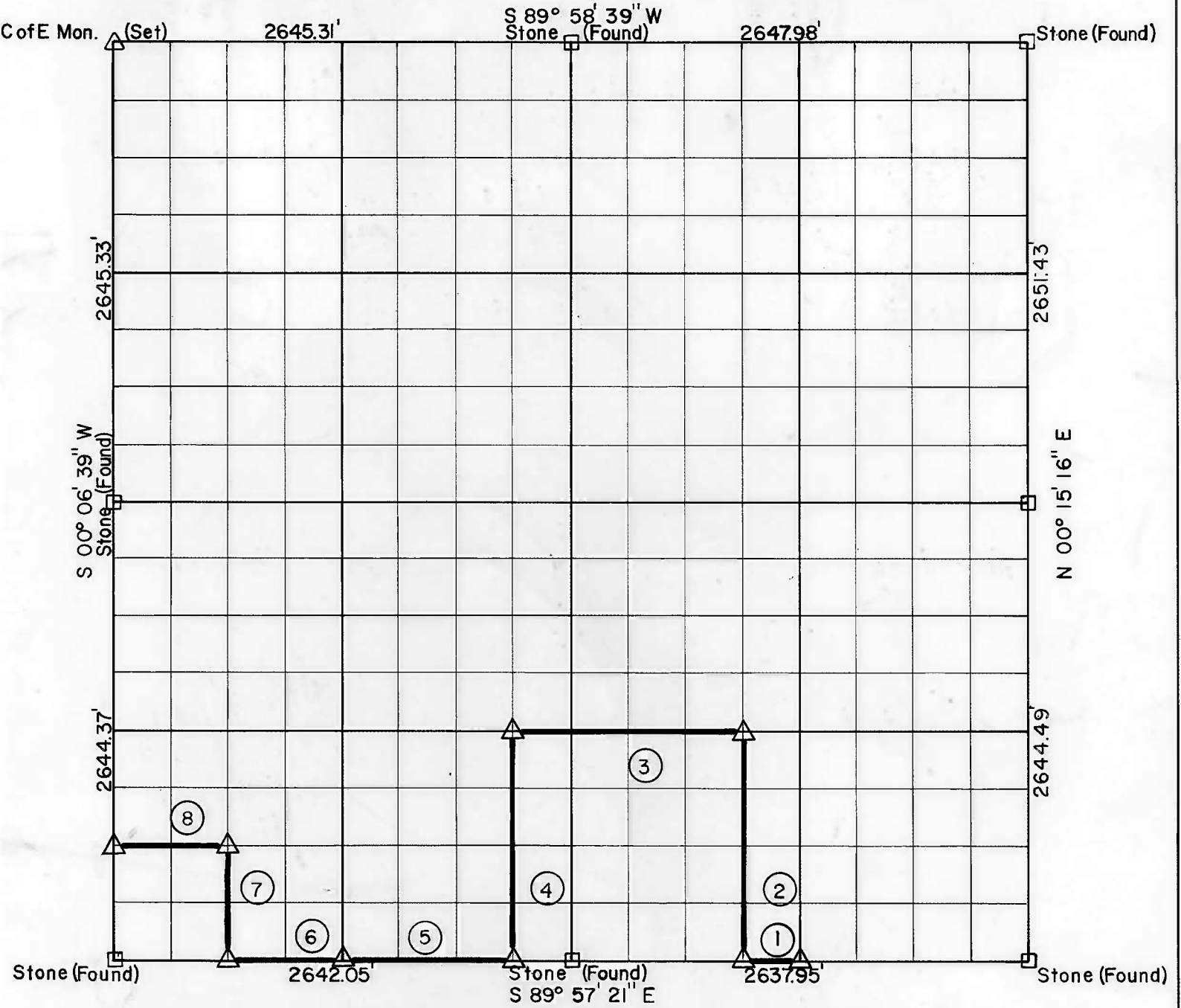


PARTIAL BOUNDARY SURVEYS

TENKILLER LAKE
ILLINOIS RIVER, OKLAHOMA

Performed Under Contract Number DACW 56-76-C-0066

SEC. 13 , T - 15 - N , R - 22 - E COUNTY CHEROKEE

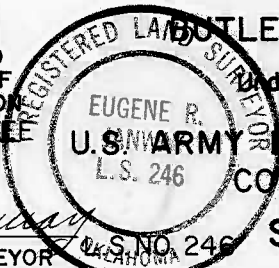


Course No.	Distance	Bearing	Course No.	Distance	Bearing
1	329.74	N 89° 57' 21" W			
2	1322.20	N 00° 11' 12" E			
3	1321.08	N 89° 57' 22" W			
4	1322.19	S 00° 08' 30" W			
5	990.77	N 89° 57' 21" W			
6	660.51	N 89° 57' 21" W			
7	661.09	N 00° 07' 10" E			
8	660.61	N 89° 57' 21" W			

Field Book No. 4-298 Date MARCH, 1976

CERTIFICATE OF SURVEY

HEREBY CERTIFY THAT THE ABOVE PLAT IS A TRUE AND CORRECT REPRESENTATION OF THE SURVEY MADE IN SECTION 13, T 15 N, R 22 E, CHEROKEE COUNTY, OKLAHOMA



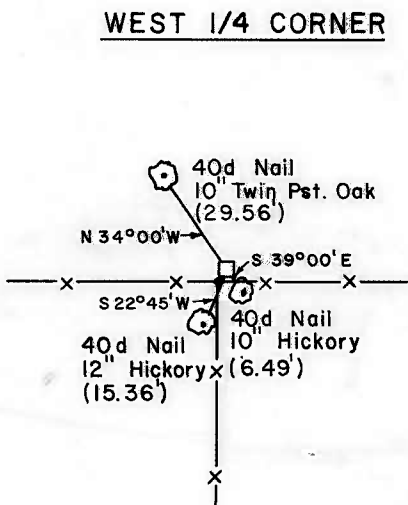
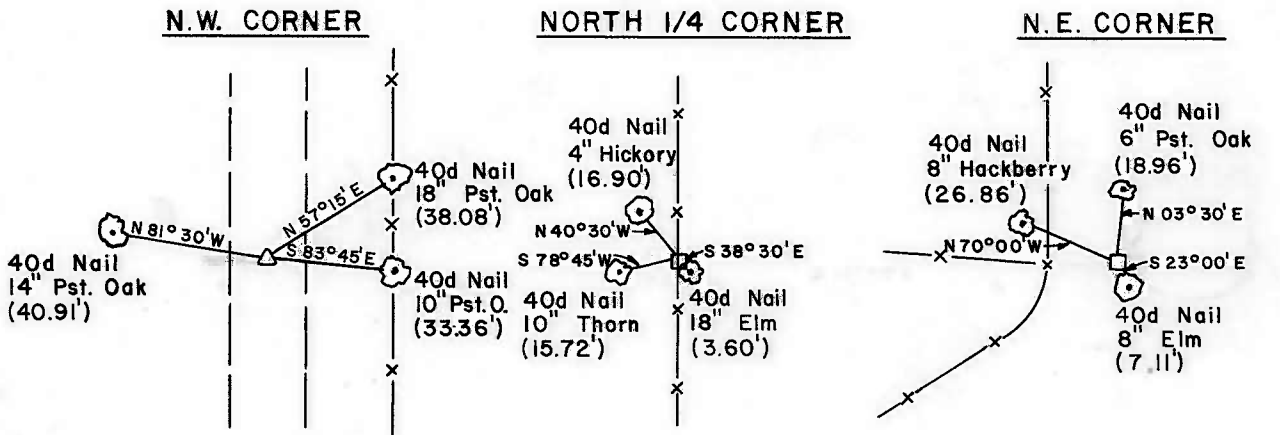
BUTLER ASSOCIATES, INC.
Under the Supervision of
U.S. ARMY ENGINEER DISTRICT, TULSA
CORPS OF ENGINEERS

LEGEND

- Δ MONUMENT
- ORIGINAL CORNER
- IRON PIN
- * COMPUTED DISTANCE

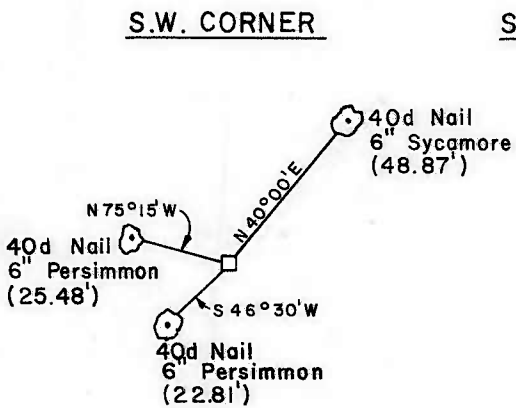
Eugene R. Jamison
REGISTERED LAND SURVEYOR

TENKILLER LAKE
ILLINOIS RIVER, OKLAHOMA
SECTION AND QUARTER SECTION CORNER
REFERENCES FOR
SEC.-13, T15N, R22E, CHEROKEE COUNTY



EAST 1/4 CORNER

By Others
□



SOUTH 1/4 CORNER

By Others
□

S.E. CORNER

By Others
□



BUTLER ASSOCIATES, INC.

Scale: 1" = 50'
 Date: March 1976
 Field Book No. 4-298

- LEGEND**
- △ Monument
 - Original Corner
 - Iron Pin

Eugene R. Janway
 Registered Land Surveyor