

TENKILLER LAKE
ILLINOIS RIVER, OKLAHOMA

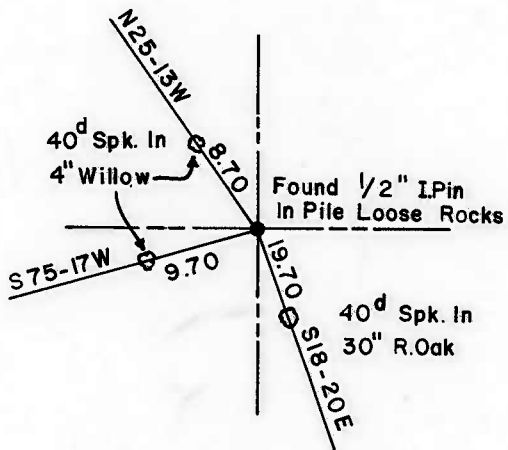
SECTION AND QUARTER SECTION CORNER
REFERENCES FOR

SEC. 1 , T 15 N, R 22 E, COUNTY -CHEROKEE

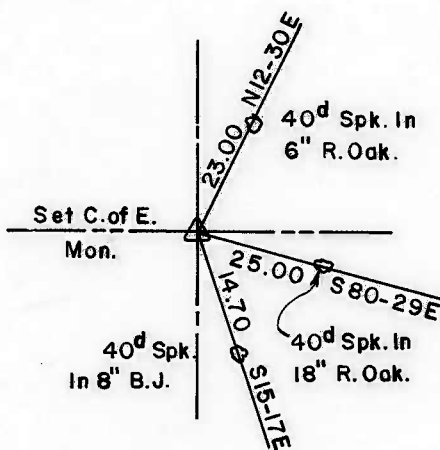
PERFORMED UNDER CONTRACT NUMBER DACW 56-77-C-0126



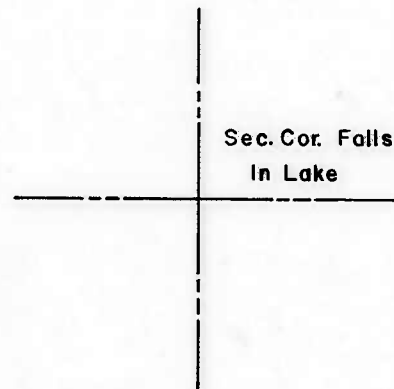
N.W. CORNER



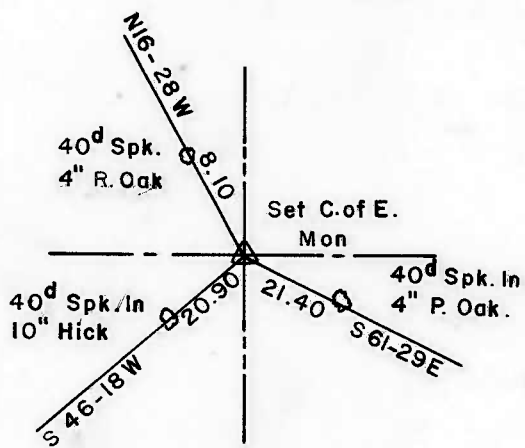
NORTH 1/4 CORNER



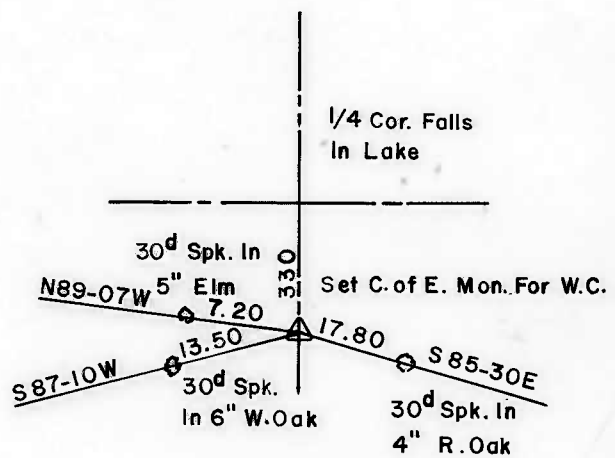
N.E. CORNER



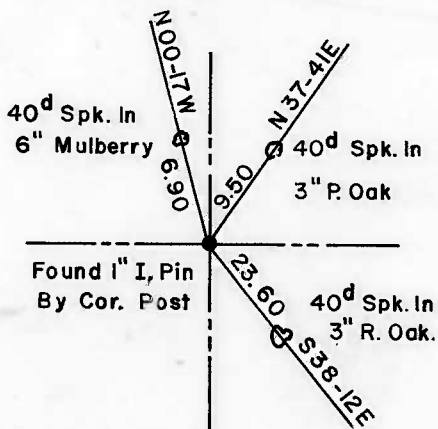
WEST 1/4 CORNER



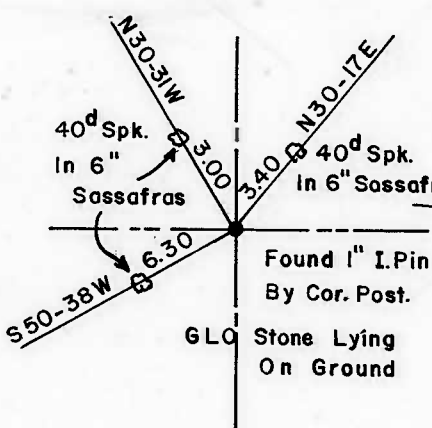
EAST 1/4 CORNER



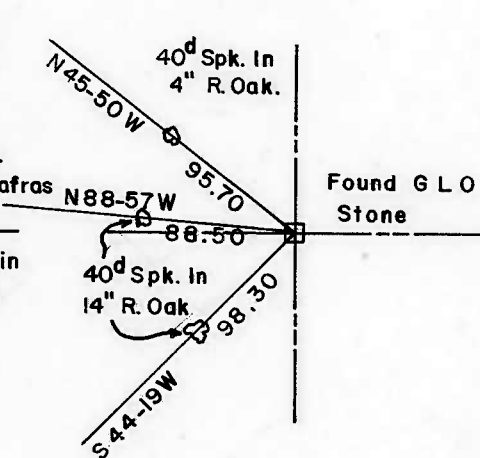
S.W. CORNER



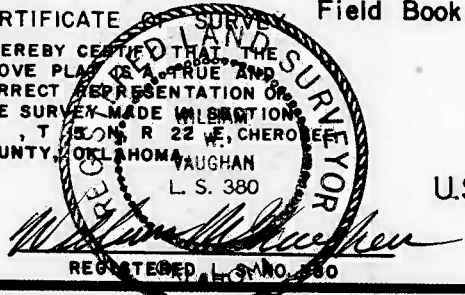
SOUTH 1/4 CORNER



S.E. CORNER



CERTIFICATE OF SURVEY
I HEREBY CERTIFY THAT THE ABOVE PLAT IS A TRUE AND CORRECT REPRESENTATION OF THE SURVEY MADE IN ACCORDANCE WITH THE PROVISIONS OF THE ACTS OF MARCH 3, 1879 AND MARCH 3, 1893, IN THE COUNTY OF CHEROKEE, OKLAHOMA.



Field Book No.4-324

Date: Aug., 1977

BRAWLEY ENGINEERING CORP
CONSULTING ENGINEERS

Under the Supervision of

U.S. ARMY ENGINEER DISTRICT, TULSA
CORPS OF ENGINEERS

LEGEND

- ORIGINAL CORNER
- △ MONUMENT
- IRON PIN