

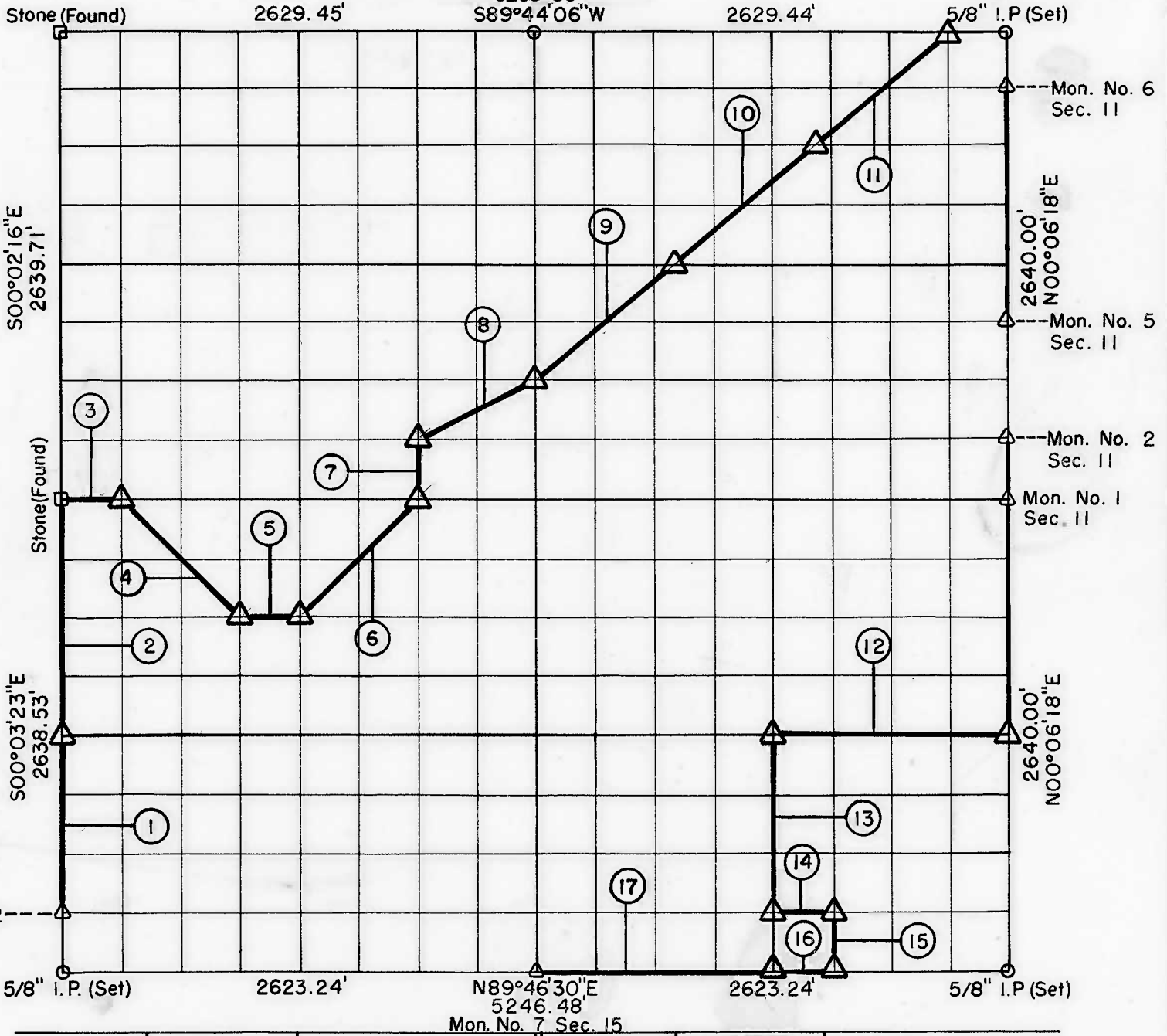
PARTIAL BOUNDARY SURVEYS

TENKILLER LAKE
ILLINOIS RIVER, OKLAHOMA

Performed Under Contract Number DACW56-72-C-0011

SEC 10 T-15 - N R-23 - E COUNTY CHEROKEE

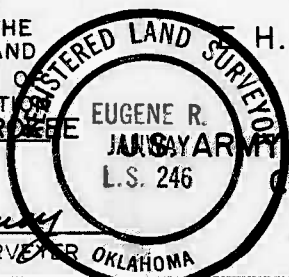
5/8" I.P. (Set)
5258.89'
S89°44'06"W



Course No.	Distance	Bearing	Course No.	Distance	Bearing
1	989.45'	N00°03'23"W	14	328.29'	N89°46'18"E
2	1319.26'	N00°03'23"W	15	329.97'	S00°04'35"W
3	328.35'	N89°44'55"E	16	327.91'	S89°46'30"W
4	928.94'	S45°00'38"E	17	1311.62'	S89°46'30"W
5	328.21'	N89°45'20"E			
6	932.76'	N44°44'14"E			
7	329.93'	N00°00'44"E			
8	736.48'	N63°07'44"E			
9	1000.00'	N49°09'04"E			
10	1000.00'	N49°09'04"E			
11	1043.31'	N49°09'04"E			
12	1312.37'	S89°45'43"W			
13	989.88'	S00°04'01"W			

CERTIFICATE OF SURVEY Field Book No. 4-280 Date: DECEMBER, 1971

HEREBY CERTIFY THAT THE ABOVE PLAT IS A TRUE AND CORRECT REPRESENTATION OF THE SURVEY MADE IN SECTION 10, T. 15 N., R. 23 E., CHEROKEE COUNTY, OKLAHOMA.



H. SCHMIDT CORPORATION
Under the Supervision of
JANUARY ENGINEER DISTRICT, TULSA
CORPS OF ENGINEERS
SHEET 1 of 1

LEGEND

- △ MONUMENT
- ORIGINAL CORNER
- IRON PIN
- * COMPUTED DISTANCE

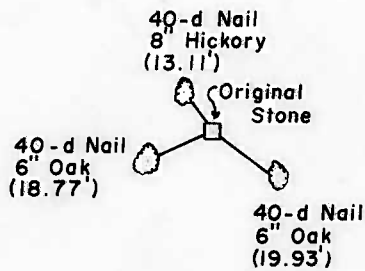
Eugene R. Janney
REGISTERED LAND SURVEYOR OKLAHOMA

TENKILLER LAKE
ILLINOIS RIVER, OKLAHOMA

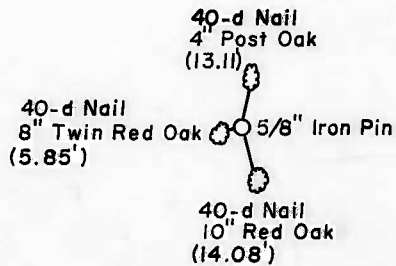
SECTION AND QUARTER SECTION CORNER
REFERENCES FOR

SEC.-10, T15N, R23E COUNTY-CHEROKEE

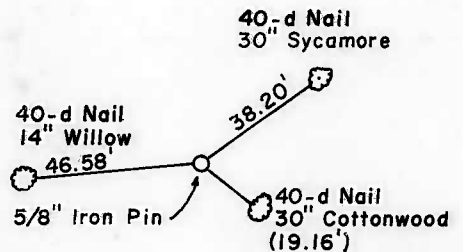
N.W. CORNER



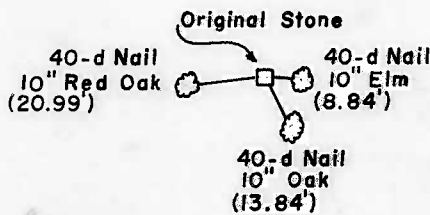
NORTH 1/4 CORNER



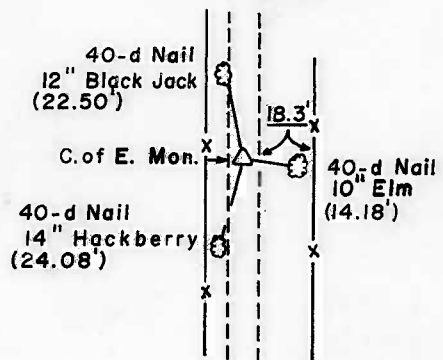
N.E. CORNER



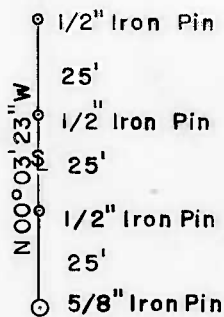
WEST 1/4 CORNER



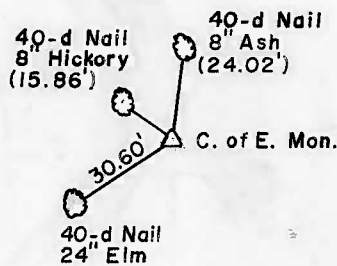
EAST 1/4 CORNER



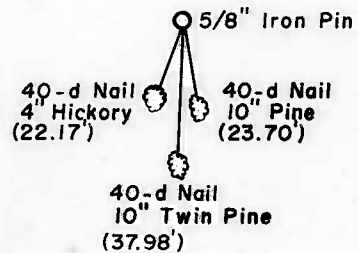
S.W. CORNER



SOUTH 1/4 CORNER



S.E. CORNER



Scale: 1" = 50'
Date: December 1971
Field Book No. 4-280

LEGEND

- △ - Monument
- - Original Corner
- - Iron Pin