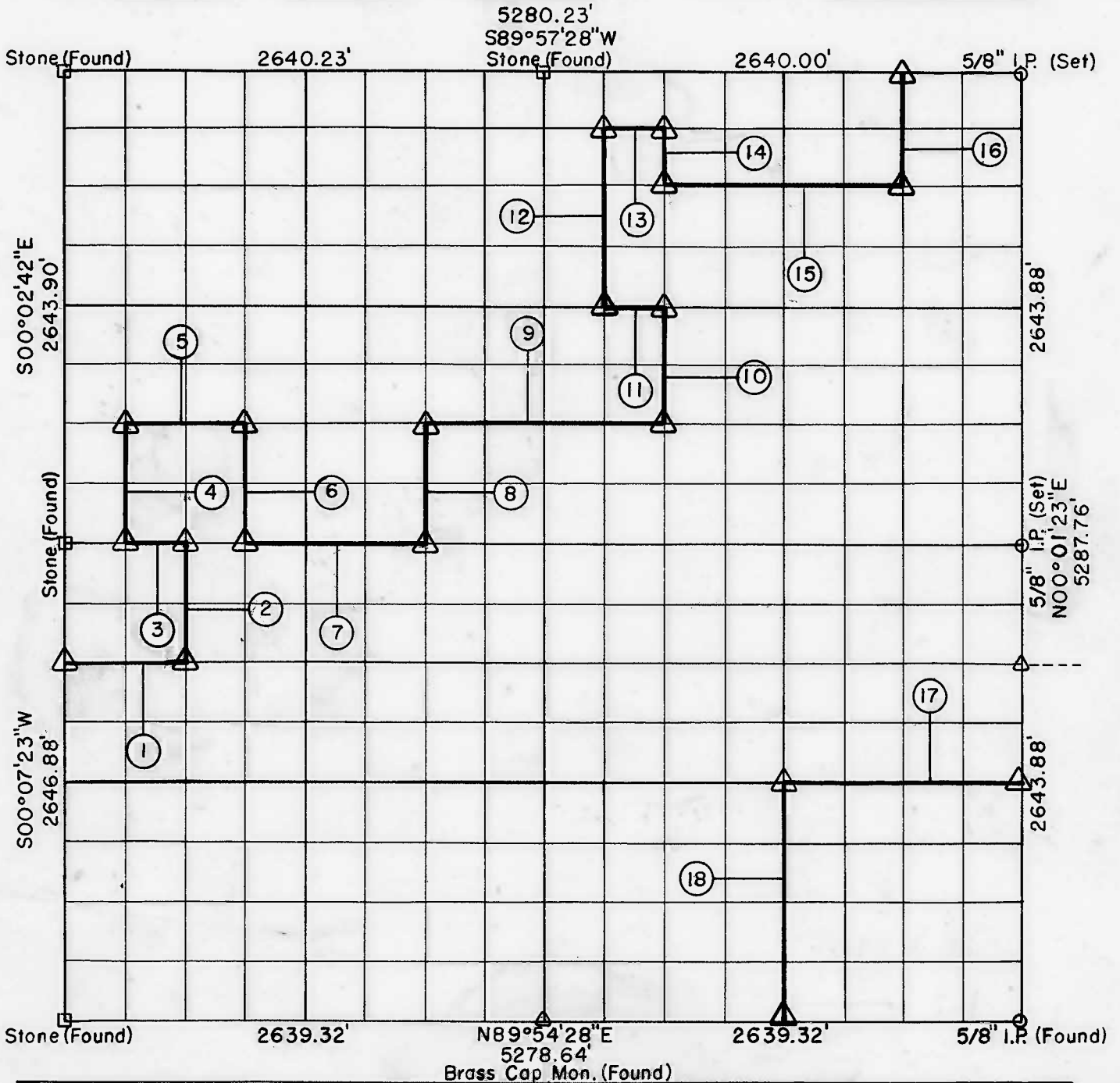


PARTIAL BOUNDARY SURVEYS

TENKILLER LAKE
ILLINOIS RIVER, OKLAHOMA

Performed Under Contract Number DACW56-72-C-0011

SEC 16 T-15 - N R-23- E COUNTY CHEROKEE



Course No.	Distance	Bearing	Course No.	Distance	Bearing
1	659.18'	N89°57'18"E	14	330.49'	S00°01'50"W
2	661.62'	N00°06'01"E	15	1319.96'	N89°57'19"E
3	329.48'	S89°56'55"W	16	660.98'	N00°01'32"E
4	660.98'	N00°02'07"W	17	1318.80'	S89°56'41"W
5	659.36'	N89°57'03"E	18	1322.31'	S00°01'40"W
6	660.98'	S00°00'57"E			
7	988.44'	N89°56'55"E			
8	660.98'	N00°00'48"E			
9	1319.30'	N89°57'03"E			
10	660.98'	N00°01'50"E			
11	329.98'	S89°57'11"W			
12	991.47'	N00°01'54"E			
13	330.00'	N89°57'23"E			

CERTIFICATE OF SURVEY Field Book No. 4-278 Date: DECEMBER, 1971

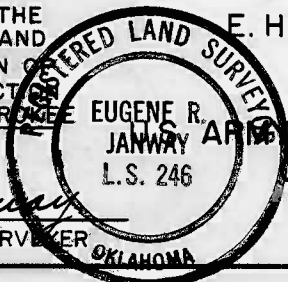
HEREBY CERTIFY THAT THE ABOVE PLAT IS A TRUE AND CORRECT REPRESENTATION OF THE SURVEY MADE IN SECTION 16, T15 N, R23 E, CHEROKEE COUNTY, OKLAHOMA. E. H. SCHMIDT CORPORATION

Under the Supervision of
EUGENE R. JANWAY
REGISTERED LAND SURVEYOR
L.S. 246
ENGINEER DISTRICT, TULSA
CORPS OF ENGINEERS
SHEET 1 of 1

LEGEND

- Δ MONUMENT
- ORIGINAL CORNER
- IRON PIN
- * COMPUTED DISTANCE

Eugene R. Janway
REGISTERED LAND SURVEYOR

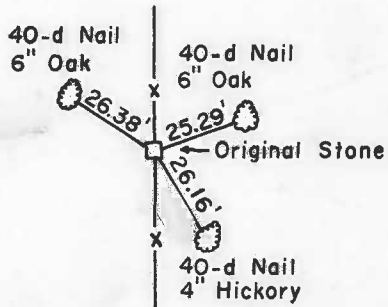


TENKILLER LAKE
ILLINOIS RIVER, OKLAHOMA

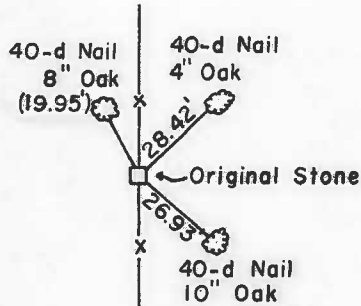
SECTION AND QUARTER SECTION CORNER
REFERENCES FOR

SEC.-16, T15N, R23E COUNTY-CHEROKEE

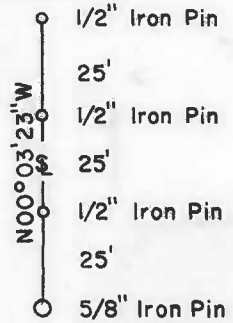
N.W. CORNER



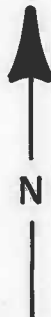
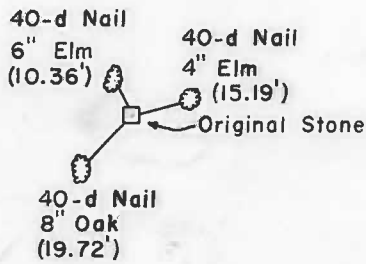
NORTH 1/4 CORNER



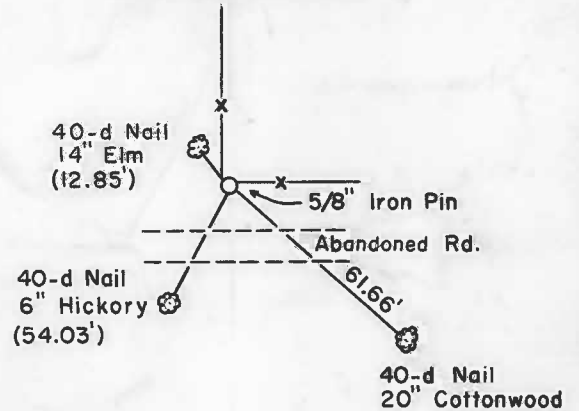
N.E. CORNER



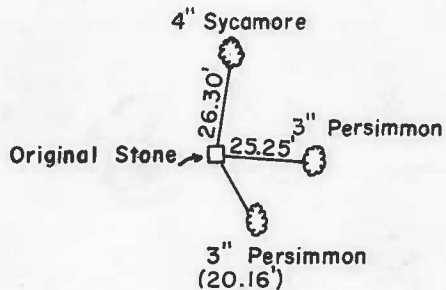
WEST 1/4 CORNER



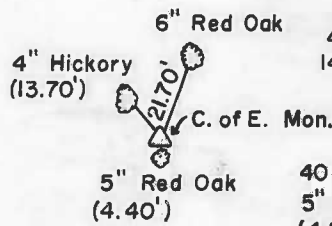
EAST 1/4 CORNER



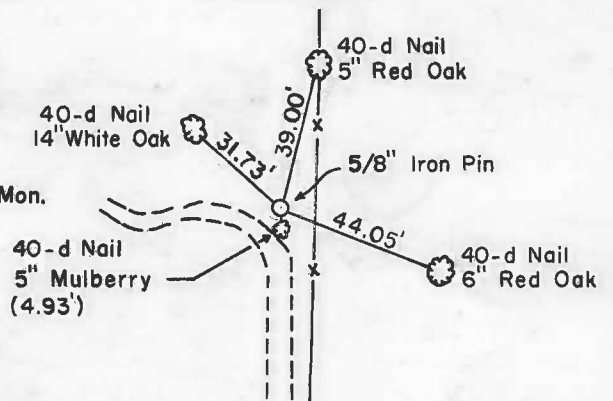
S.W. CORNER



SOUTH 1/4 CORNER



S.E. CORNER



Scale: 1" = 50'

Date: December 1971

Field Book No. 4-278

LEGEND

- △ - Monument
- - Original Corner
- - Iron Pin