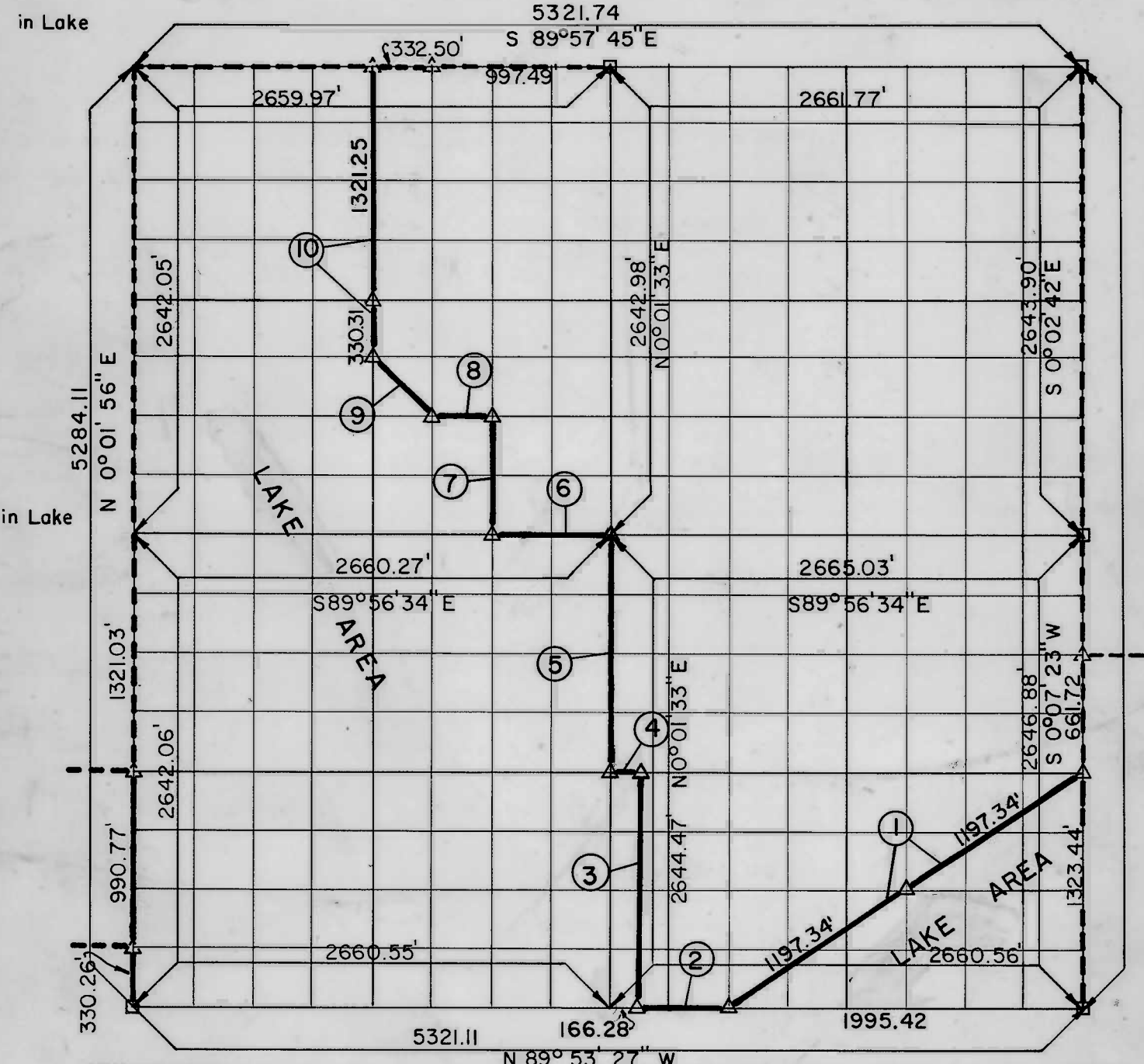


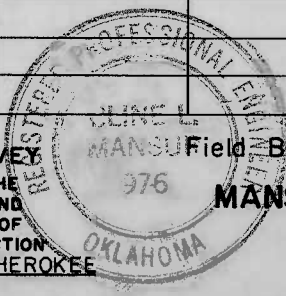
PARTIAL BOUNDARY SURVEYS TENKILLER LAKE AREA "B"

Performed Under Contract Number DACW 56-72-C-0015

SEC. 17 T 15 N, R 23 E COUNTY, CHEROKEE



Course No.	Distance	Bearing	Course No.	Distance	Bearing
1	2394.67	S 56° 33' 34" W			
2	498.85	N 89° 53' 27" W			
3	1322.31	N 0° 01' 55" E			
4	166.42	N 89° 55' 00" W			
5	1322.24	N 0° 01' 33" E			
6	665.07	N 89 56 34 W			
7	660.69	N 0° 01' 38" E			
8	332.52	N 89° 56' 52" W			
9	468.80	N 45° 08' 58" W			
10	1651.56	N 0° 01' 44" E			



CERTIFICATE OF SURVEY. I HEREBY CERTIFY THAT THE ABOVE PLAT IS A TRUE AND CORRECT REPRESENTATION OF THE SURVEY MADE IN SECTION 17, T 15 N, R 23 E, CHEROKEE COUNTY, OKLAHOMA.

MANSUR-STEELE-WILLIAMS, INC.
CONSULTING ENGINEERS

LEGEND
 ▲ MONUMENT
 □ ORIGINAL CORNER
 ○ IRON PIN

Under the Supervision of
 U.S. ARMY ENGINEER DISTRICT, TULSA
 CORPS OF ENGINEERS

Mansur
 REGISTERED PROFESSIONAL ENGINEER

TENKILLER LAKE

SECTION AND QUARTER SECTION CORNER REFERENCES FOR

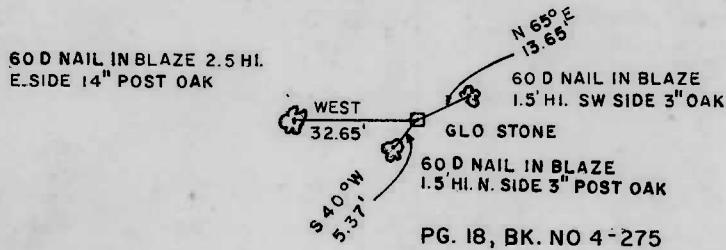
SEC. 17 T. 15 N, R. 23 E COUNTY - CHEROKEE



NW CORNER
in Lake

N $\frac{1}{4}$ CORNER

NE CORNER
BY OTHERS



W $\frac{1}{4}$ CORNER
in Lake

CENTER OF SECTION

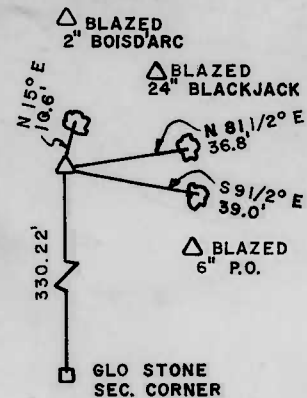
E $\frac{1}{4}$ CORNER
BY OTHERS



SW CORNER

S $\frac{1}{4}$ CORNER
in Lake

SE CORNER
BY OTHERS



Scale: 1" = 50'

Date: Jan., 1972

Field book No. 4-276

MANSUR-STEELE-WILLIAMS, INC.
CONSULTING ENGINEERS
CONTRACT NUMBER DACW 56-72-C-0015
UNDER THE SUPERVISION OF
U.S. ARMY ENGINEER DISTRICT, TULSA
CORPS OF ENGINEERS

LEGEND

- △ - Monument
- - Original Corner
- - Iron pin