

JUN 29 1977

003555

PARTIAL BOUNDARY SURVEYS
TENKILLER FERRY LAKE
ILLINOIS RIVER, OKLAHOMA

At 10²⁰ O'clock and recorded
in Book 282 At Page 17-18
ROMADELL HANNAH, County Clerk
Deputy

Performed Under Contract Number DACW 56-77-C-0080

SEC. 27, T-15-N, R-23-E COUNTY CHEROKEE

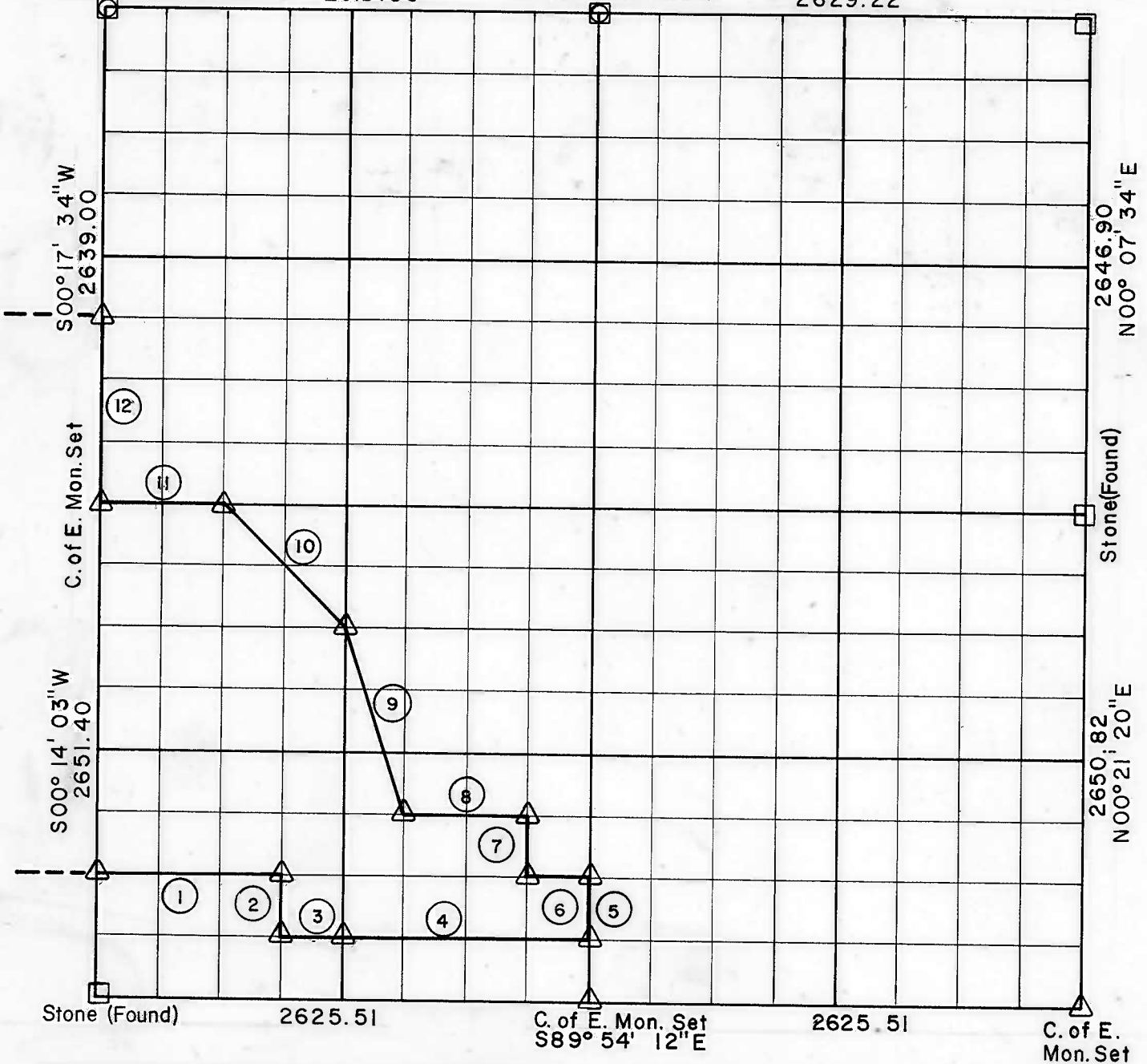
Stone Loose
W/3/4" I.P. (Found)

N89°54'22"W
2619.95

Stone Loose
W/1/2" I.P. (Found)

S89°56'24"W
2629.22

Stone (Found)



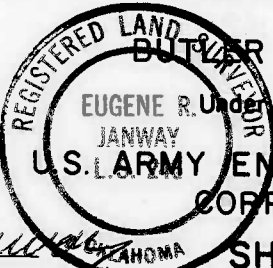
Stone (Found) 2625.51 C. of E. Mon. Set S89° 54' 12" E 2625.51 C. of E. Mon. Set 2650.82 N00° 21' 20" E

Course No.	Distance	Bearing	Course No.	Distance	Bearing
1	984.46	S89° 54' 06" E			
2	331.41	S00° 13' 19" W			
3	328.18	S89° 54' 09" E			
4	1312.71	S89° 54' 09" E			
5	331.39	N00° 12' 08" E			
6	328.15	N89° 54' 06" W			
7	331.39	N00° 12' 22" E			
8	656.26	N89° 54' 03" W			
9	1046.32	N18° 03' 30" W			
10	931.64	N44° 32' 39" W			
11	656.03	N89° 53' 48" W			
12	989.62	N00° 17' 34" E			

Field Book No. 4-302 Date April, 1977

CERTIFICATE OF SURVEY

I HEREBY CERTIFY THAT THE ABOVE PLAT IS A TRUE AND CORRECT REPRESENTATION OF THE SURVEY MADE IN SECTION 27, T15 N, R23 E, CHEROKEE COUNTY, OKLAHOMA



BUTLER ASSOCIATES, INC.

EUGENE R. JANWAY Under the Supervision of

JANWAY U.S. ARMY ENGINEER DISTRICT, TULSA CORPS OF ENGINEERS

LEGEND

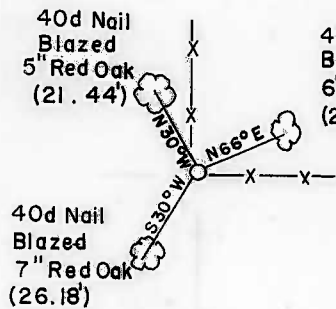
- △ MONUMENT
- ORIGINAL CORNER
- IRON PIN
- * COMPUTED DISTANCE

REGISTERED LAND SURVEYOR L.S. No. 246

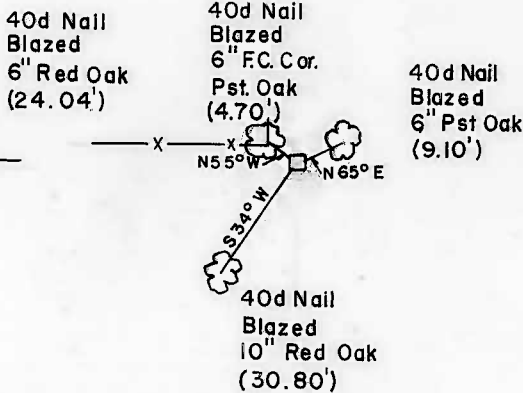
SHEET 1 of 2

TENKILLER FERRY LAKE
 ILLINOIS RIVER, OKLAHOMA
 SECTION AND QUARTER SECTION CORNER
 REFERENCES FOR
 SEC -27, T15 N, R23 E CHEROKEE COUNTY

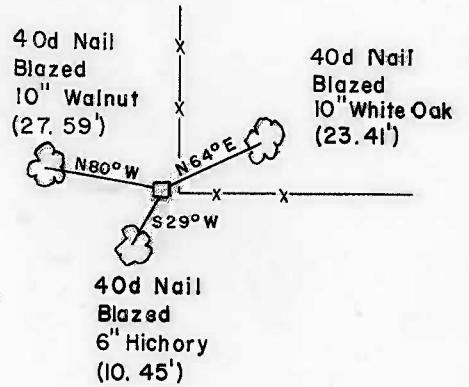
N W CORNER



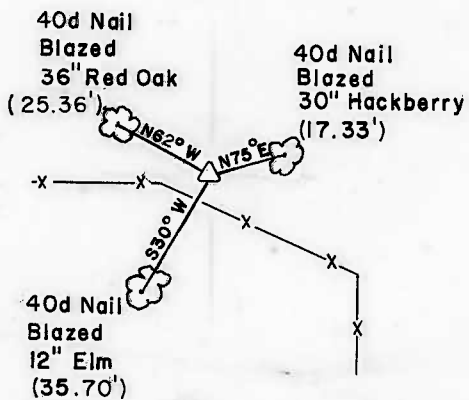
NORTH 1/4 CORNER



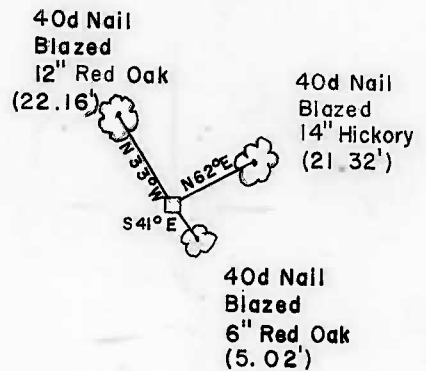
N E CORNER



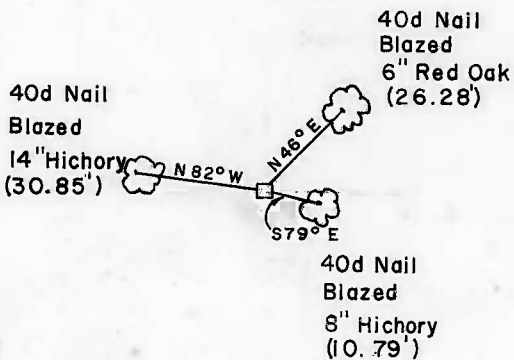
WEST 1/4 CORNER



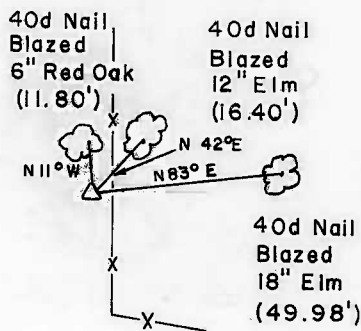
EAST 1/4 CORNER



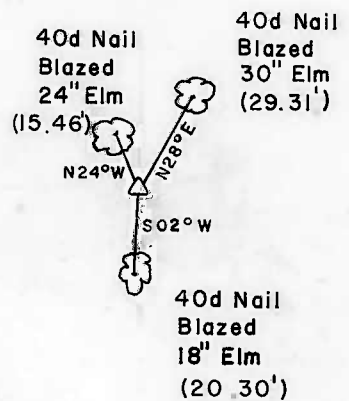
S.W. CORNER



SOUTH 1/4 CORNER



S.E. CORNER



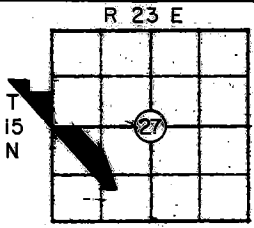
BUTLER ASSOCIATES, INC.

Scale: 1" = 50'
 Date: APRIL 1977
 Field Book No. 4-302

LEGEND

- △ Monument
- Original Corner
- Iron Pin

Eugene R. Janway
 Registered Land Surveyor L.S. No. 246



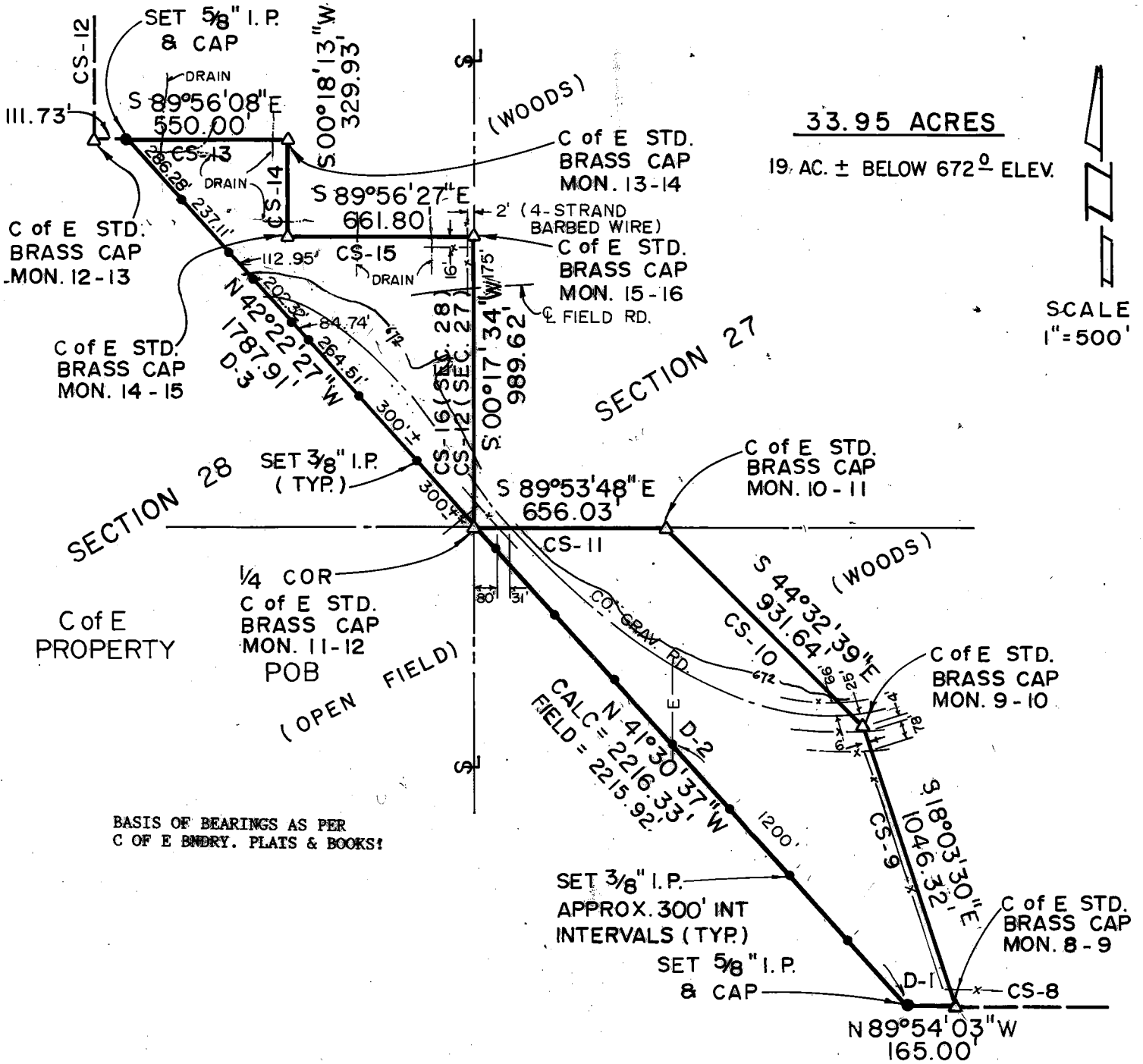
**PARTIAL BOUNDARY SURVEYS
TENKILLER LAKE OKLA.
SEC. 27 T-15 -N R-23-E
& 28**

PARCEL # 21

COUNTY CHEROKEE

D.O. NO. OOQI

Performed Under Contract No. DACA 56-88-D-0047



PARCEL #21 DESCRIPTION

Parcel #21 containing 33.95 Acres, "more or less", located in the SE 1/4 of the NE 1/4 of Section 28 AND the SW 1/4 of Section 27, all in Township 15 North, Range 23 East, Indian Meridian, Cherokee County, Oklahoma, described as: beginning at the E 1/4 corner of Section 28, being a std. C of E brass cap (mon 11/12); thence N 42°22'27"W, 1787.91 feet (D-3) to a point on the north line of the SE 1/4 NE 1/4 of Section 28, being a 5/8" iron pin with aluminum cap; thence S 89°56'08"E, 550.00 feet (cs-13) to the northeast corner of NW 1/4 SE 1/4 NE 1/4 of Section 28, being a std. C of E brass cap (mon 13/14); thence S 00°18'13"W, 329.93 feet (cs-14) to the southeast corner of NE 1/4 NW 1/4 SE 1/4 NE 1/4 of Section 28, being a std. C of E brass cap (mon 14/15); thence S 89°56'27"E, 661.80 feet (cs-15) to the northeast corner of Section 28 and Section 27, being a std. C of E brass cap (mon 15/16); thence S 00°17'34"W, 989.62 feet (cs-16 of Section 28) and (cs-12 of Section 27) to the southeast corner of NE 1/4 of Section 28, being a std. C of E brass cap (mon 11/12); thence S 89°53'48"E, 656.03 feet (cs-11 of Section 27) to the northeast corner of NW 1/4 NW 1/4 SW 1/4 of Section 27, being a std. C of E brass cap (mon 10/11); thence S 44°32'39"E, 931.64 feet (cs-10) to a point on the East line of W 1/2 SW 1/4 of Section 27, being a std. C of E brass cap (mon 9/10) and in a gravel road; thence S 18°03'30"E, 1046.32 feet (cs-9) to the southeast corner of NW 1/4 NW 1/4 SE 1/4 SW 1/4 of Section 27, being a std. C of E brass cap (mon 8/9); thence S 89°54'03"E, 165.00 feet (D-1) to a point on the south line of the NW 1/4 NW 1/4 SE 1/4 SW 1/4 of Section 27, being a 5/8" iron pin with aluminum cap; thence N 41°30'37"W, 2215.92 feet (D-2) to the point of beginning.

Field Book No. 4-302 4-303 Date 11-88

CERTIFICATE OF SURVEY

I Hereby Certify That The Above Plat is a True and Correct Representation of the Survey

**SCOTT & ASSOCIATES INC.
LAND SURVEYORS**

- LEGEND -

- △ MONUMENT
- ORIGINAL CORNER
- IRON PIN W/CAP

**U.S. ARMY CORPS OF ENGINEERS
TULSA DISTRICT**

BASIL E. SCOTT, JR. L.S. 545

REFERENCES

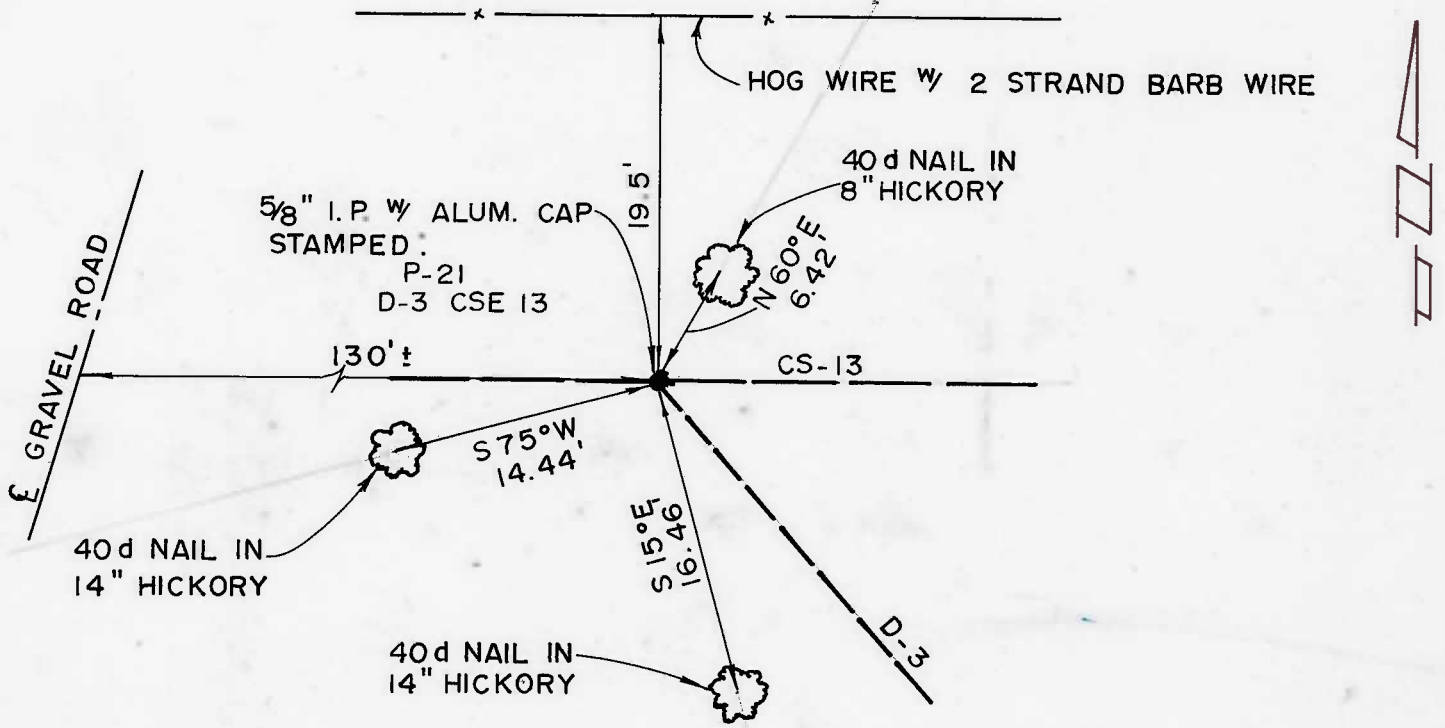
PARTIAL BOUNDARY SURVEYS
TENKILLER LAKE OKLA.
SEC. 27 T-15 -N R-23 -E

COUNTY CHEROKEE

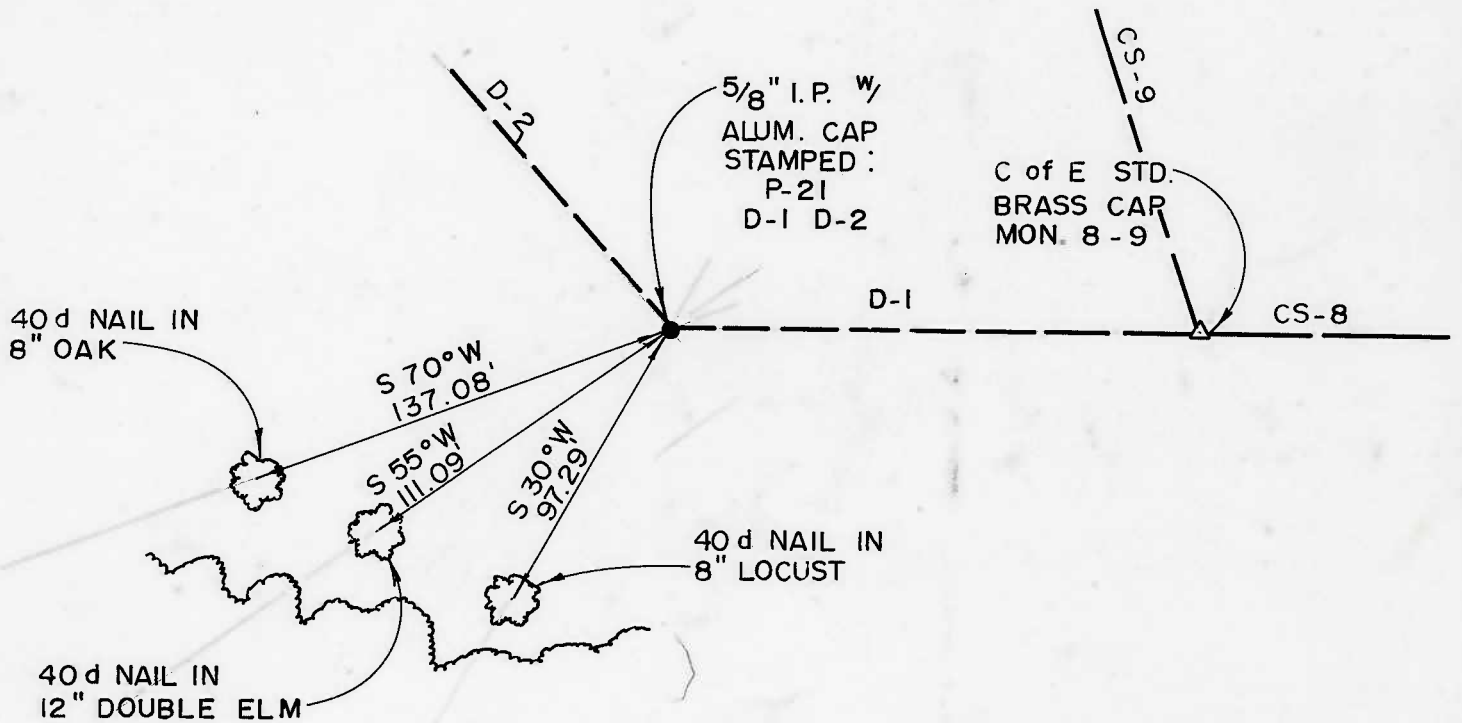
D.O. NO. 0001

Performed Under Contract No. DACA 56-88-D-0047

PARCEL # 21



D-3, CSE 13



D-1, D-2

Field Book No. 4-302 4-303 Date 11-88

CERTIFICATE OF SURVEY

I Hereby Certify That The Above Plat is a True and Correct Representation of the Survey.

SCOTT & ASSOCIATES, INC.
LAND SURVEYORS

U.S. ARMY CORPS OF ENGINEERS
TULSA DISTRICT

— LEGEND —

- △ MONUMENT
- ORIGINAL CORNER
- IRON PIN w/CAP

Basil E. Scott Jr.
BASIL E. SCOTT JR. L.S. 545