

JUN 29 1977

PARTIAL BOUNDARY SURVEYS

003556

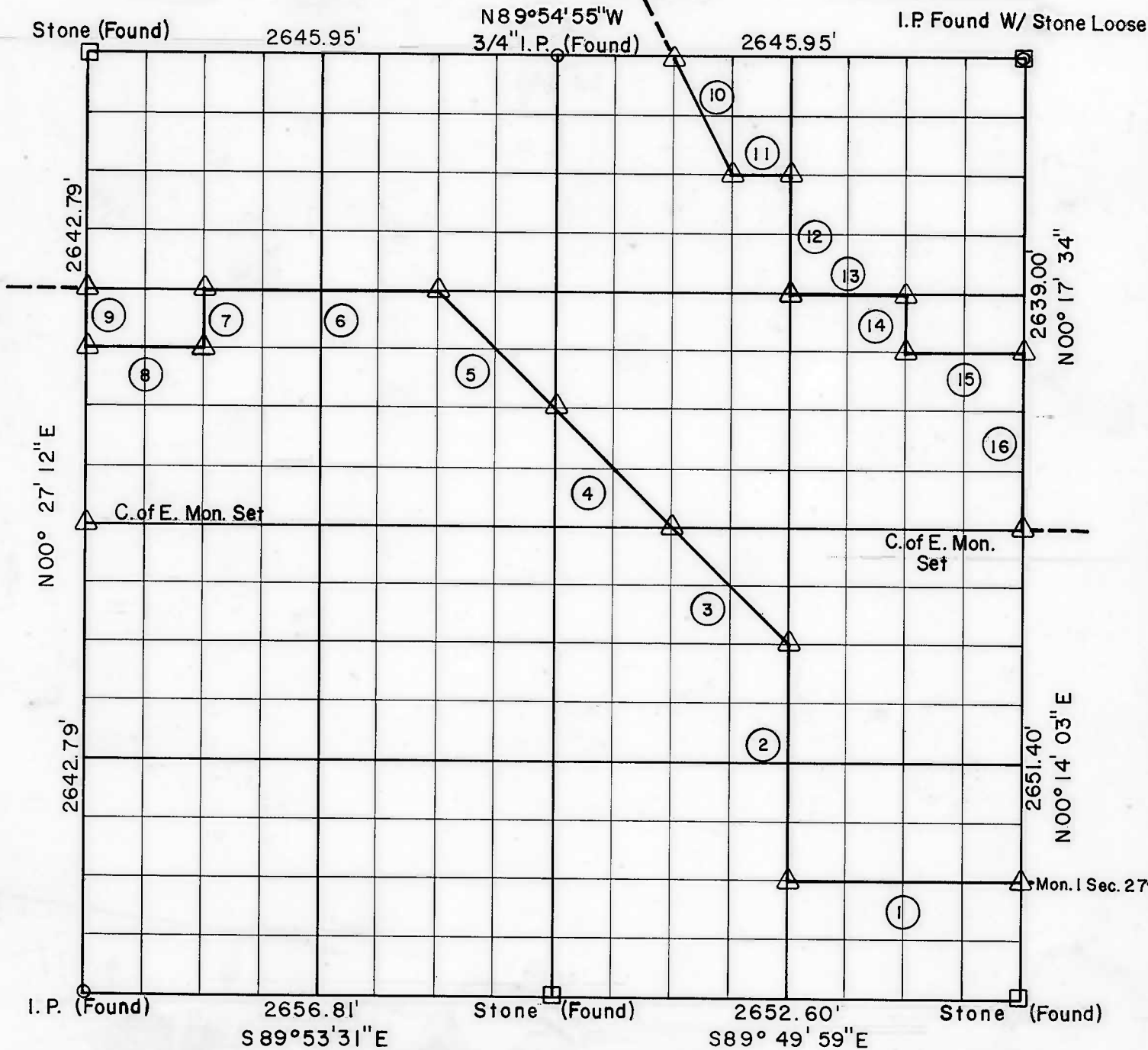
TENKILLER FERRY LAKE

ILLINOIS RIVER, OKLAHOMA

At 10<sup>25</sup> O'clock and recorded  
in Book 282 At Page 19-20  
ROMADELL HANNAH, County Clerk  
Deputy

Performed Under Contract Number DACW 56-77-C-0080

SEC. 28 , T - 15 - N , R - 23 - E COUNTY CHEROKEE

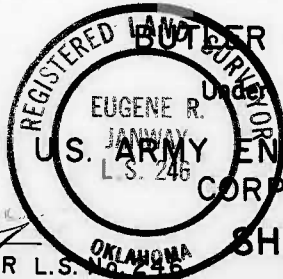


Course No.	Distance	Bearing	Course No.	Distance	Bearing
1	1325.72	N89° 51' 49" W	9	330.35	N00° 27' 12" E
2	1324.28	N00° 17' 05" E	10	737.06	S26° 20' 33" E
3	934.33	N44° 49' 43" W	11	330.81	S89° 55' 31" E
4	932.56	N44° 53' 12" W	12	659.98	S00° 18' 51" W
5	932.86	N44° 53' 06" W	13	661.73	S89° 56' 08" E
6	1324.34	N89° 56' 08" W	14	329.93	S00° 18' 13" W
7	330.29	S00° 25' 26" W	15	661.80	S00° 17' 34" W
8	662.34	N89° 56' 27" W	16		

Field Book No. 4-303 Date March, 1977

CERTIFICATE OF SURVEY

I HEREBY CERTIFY THAT THE ABOVE PLAT IS A TRUE AND CORRECT REPRESENTATION OF THE SURVEY MADE IN SECTION 28, T. 15. N., R. 23 E., CHEROKEE COUNTY, OKLAHOMA



BUTLER ASSOCIATES, INC.

Under the Supervision of  
U.S. ARMY ENGINEER DISTRICT, TULSA  
CORPS OF ENGINEERS

LEGEND

- △ MONUMENT
- ORIGINAL CORNER
- IRON PIN
- \* COMPUTED DISTANCE

*Eugene R. January*  
REGISTERED LAND SURVEYOR L.S. 246

SHEET 1 of 2

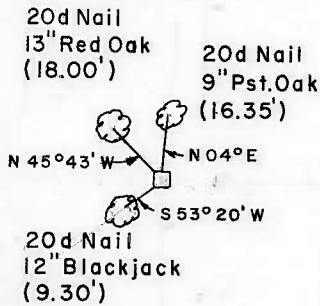
# TENKILLER FERRY LAKE ILLINOIS RIVER, OKLAHOMA

## SECTION AND QUARTER SECTION CORNER REFERENCES FOR

### SEC.-28, T15 N, R23 E CHEROKEE COUNTY

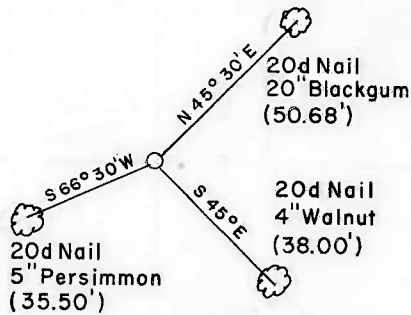
#### N.W. CORNER

BY OTHERS

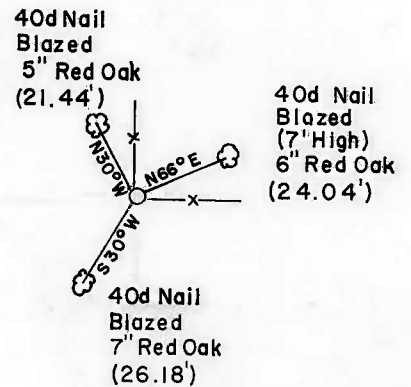


#### NORTH 1/4 CORNER

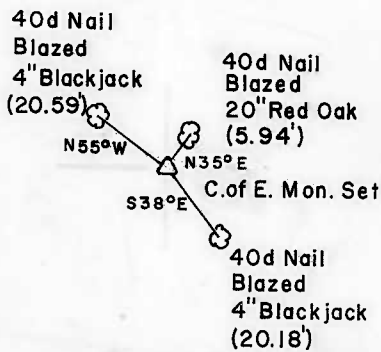
BY OTHERS



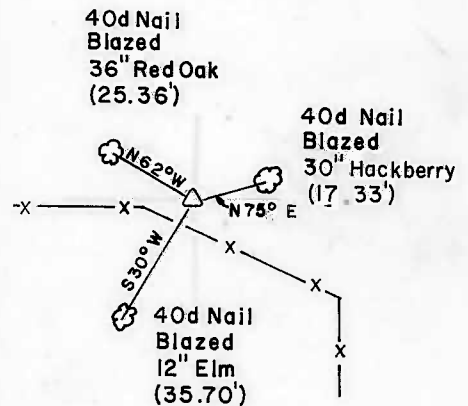
#### N.E. CORNER



#### WEST 1/4 CORNER

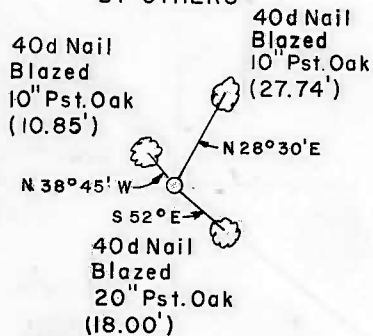


#### EAST 1/4 CORNER

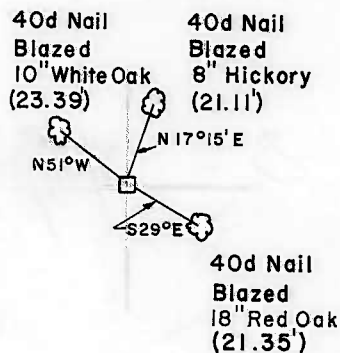


#### SW CORNER

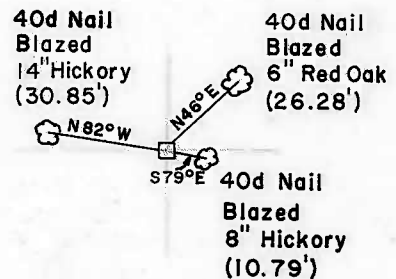
BY OTHERS



#### SOUTH 1/4 CORNER



#### SE CORNER



BUTLER ASSOCIATES, INC.

Scale: 1" = 50'  
Date: MARCH 1977  
Field Book No. 4-303

#### LEGEND

- △ Monument
- Original Corner
- Iron Pin

