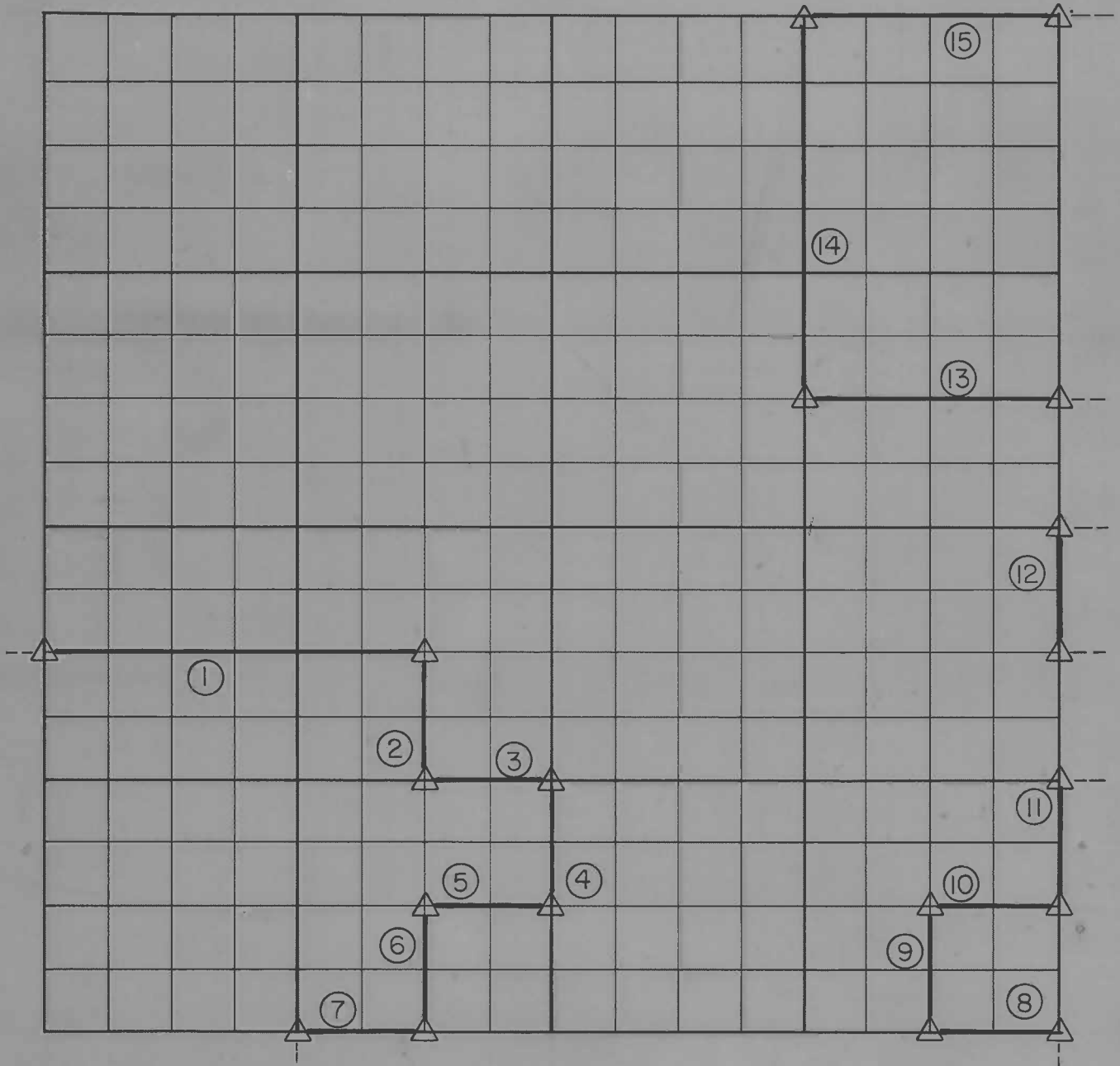


PARTIAL BOUNDARY SURVEYS TENKILLER LAKE

Performed Under Contract Number DACW 56-85-C-1028

SEC. 30 , T - 15 - N , R - 23 - E COUNTY CHEROKEE



Course No.	Distance	Bearing	Course No.	Distance	Bearing
1	1932.08	S 89°59' 40" E	14	1981.32	N 00°02' 50" W
2	660.45	N 00°03' 40" W	15	1323.07	S 89°59' 30" W
3	660.69	S 89°59' 50" E			
4	660.43	N 00°04' 50" W			
5	660.54				
6	660.45	N 00°03' 40" W			
7	660.40				
8	660.40				
9	660.37	N 00°03' 20" W			
10	660.55				
11	660.37	N 00°02' 50" W			
12	660.37	N 00°02' 50" W			
13	1322.30	S 89°59' 50" E			

Field Book No. _____ Date _____

PLAT REPRESENTS DATA AS SUPPLIED BY THE U.S. ARMY CORPS OF ENGINEERS. PREPARED OCTOBER 1986 BY CUNNINGHAM DAVIS - STOLDT, Inc., TULSA, OK.

Under the Supervision of

**U.S. ARMY ENGINEER DISTRICT, TULSA
CORPS OF ENGINEERS**

LEGEND

- △ MONUMENT
- ORIGINAL CORNER
- IRON PIN
- * COMPUTED DISTANCE