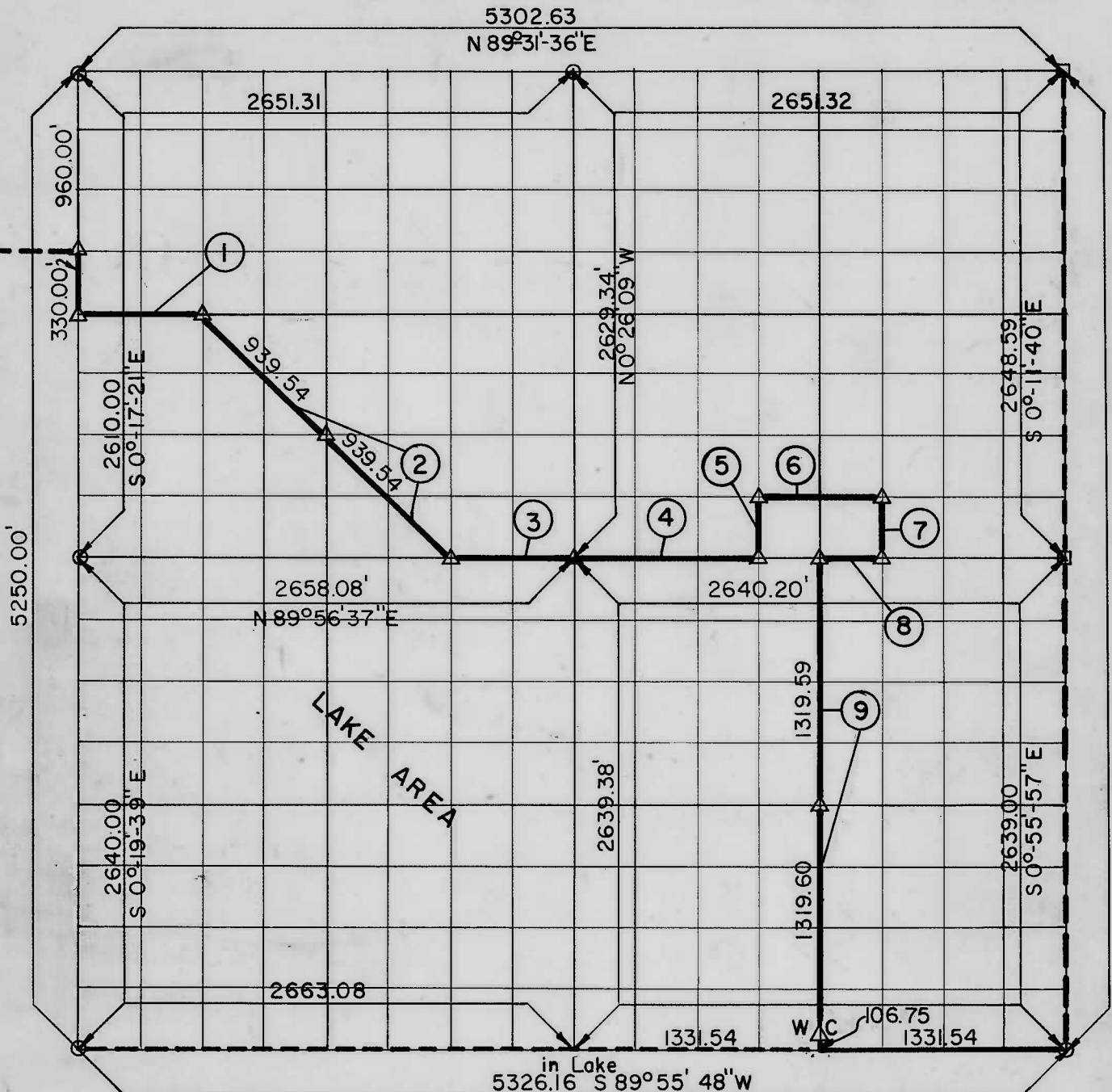


# PARTIAL BOUNDARY SURVEYS TENKILLER LAKE AREA "B"

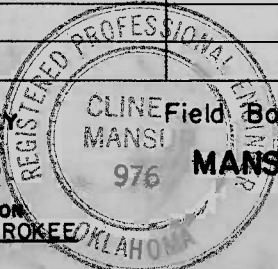
Performed Under Contract Number DACW 56-72-C-0015

SEC. 5 T 15 N, R 23 E COUNTY, CHEROKEE



Course No.	Distance	Bearing	Course No.	Distance	Bearing
1	663.66	N 89°45' 29" E			
2	1879.08	S 45°20' 21" E			
3	664.52	N 89°56' 37" E			
4	990.08	N 89°56' 37" E			
5	332.97	N 0°20' 43" W			
6	660.40	N 89°53' 46" E			
7	333.50	S 0°17' 06" E			
8	330.02	S 89°56' 37" W			
9	2639.19	S 0°41' 03" E			

CERTIFICATE OF SURVEY  
 I HEREBY CERTIFY THAT THE ABOVE PLAT IS A TRUE AND CORRECT REPRESENTATION OF THE SURVEY MADE IN SECTION 5, T 15 N, R 23 E, CHEROKEE COUNTY, OKLAHOMA.



CLINE Field Book No. 4-274 Date Jan. 5, 1972  
**MANSUR-STEELE-WILLIAMS, INC.**  
 CONSULTING ENGINEERS

**LEGEND**  
 Δ MONUMENT  
 □ ORIGINAL CORNER  
 ○ IRON PIN

*Cline Mansur*  
 REGISTERED PROFESSIONAL ENGINEER

Under the Supervision of  
 U.S. ARMY ENGINEER DISTRICT, TULSA  
 CORPS OF ENGINEERS.

TENKILLER LAKE

SECTION AND QUARTER SECTION CORNER REFERENCES FOR

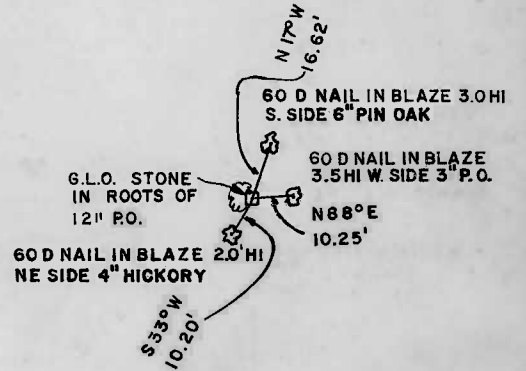
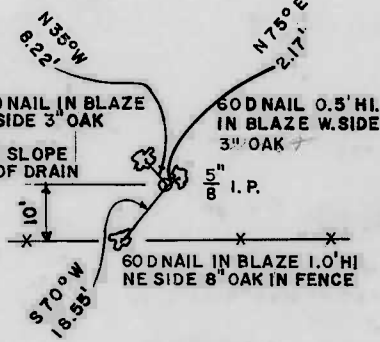
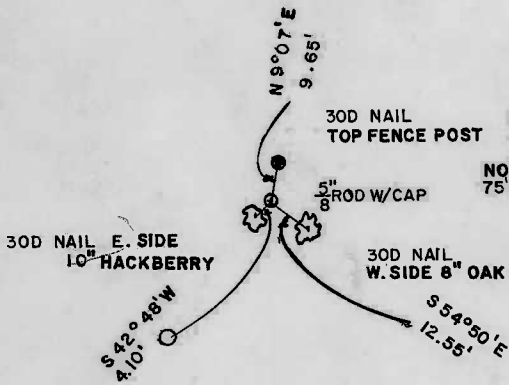
SEC. 5 T15 N, R23 E. COUNTY-CHEROKEE



NW CORNER

N 1/4 CORNER

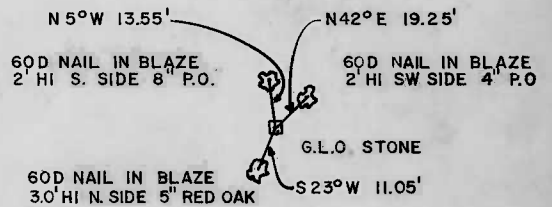
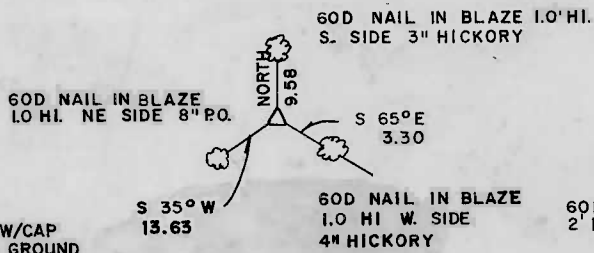
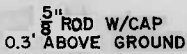
NE CORNER



W 1/4 CORNER

C. OF SECTION

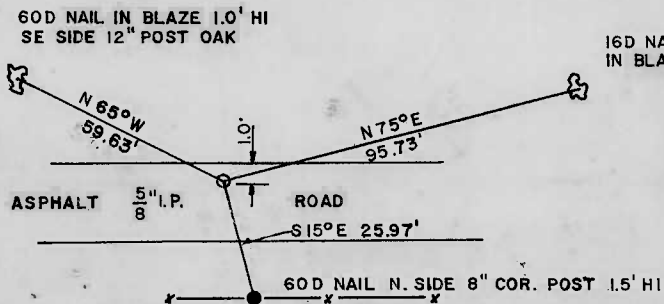
E 1/4 CORNER



SW CORNER

S 1/4 CORNER IN LAKE

SE CORNER BY OTHERS



Scale 1" = 50'

Date: Jan., 1972

Field book No. 4-274

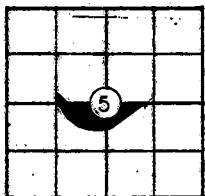
MANSUR-STEELE-WILLIAMS, INC. CONSULTING ENGINEERS CONTRACT NUMBER DACW 56-72-C-0015 UNDER THE SUPERVISION OF U.S. ARMY ENGINEER DISTRICT, TULSA CORPS OF ENGINEERS

LEGEND

- Δ - Monument
□ - Original Corner
○ - Iron pin

R 23 E

T 15 N



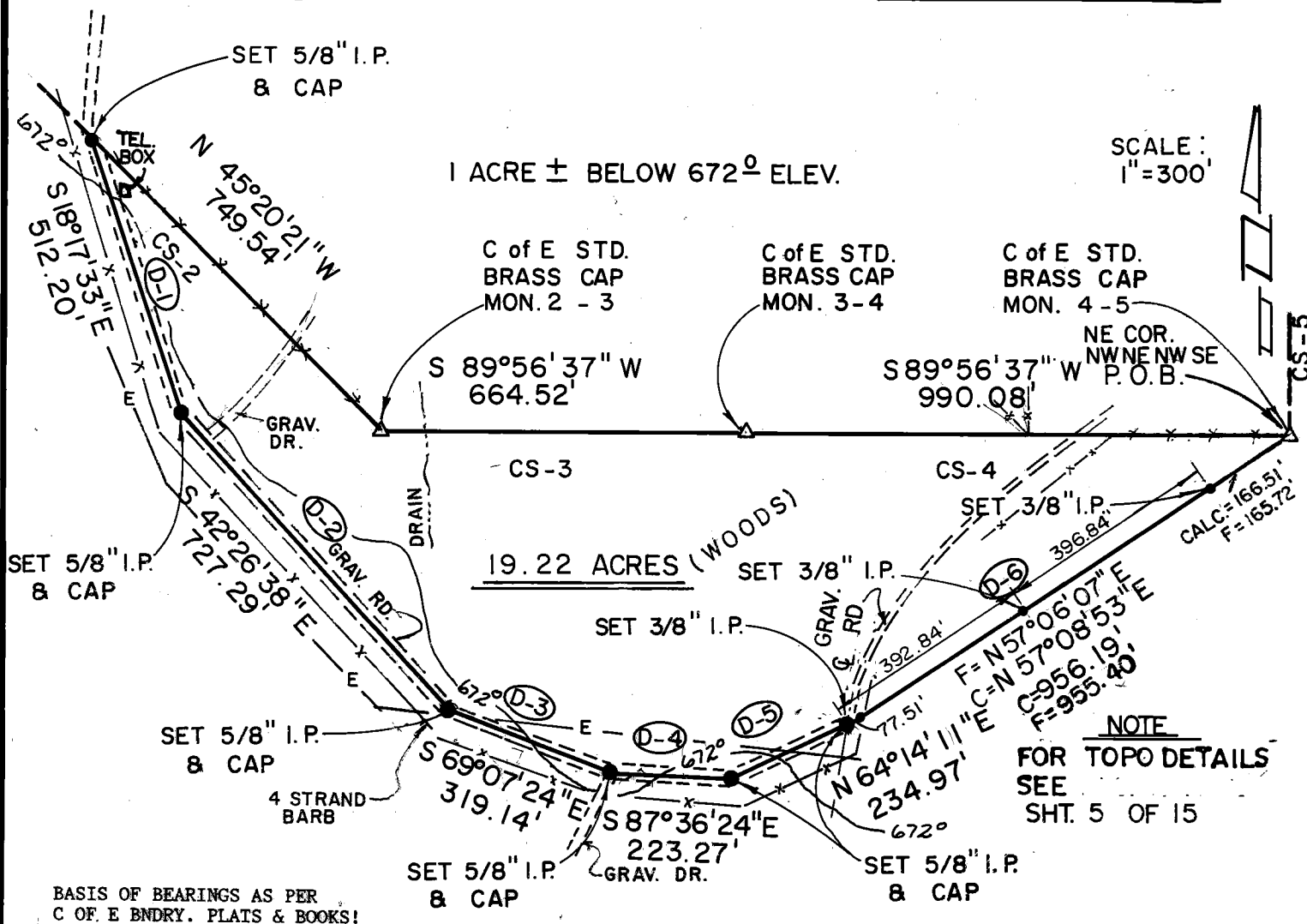
# PARTIAL BOUNDARY SURVEYS TENKILLER LAKE OKLA. SEC. 5 T-15 -N R-23-E

PARCEL # 28

COUNTY CHEROKEE

D.O. NO. 0001

Performed Under Contract No. DACA 56-88-D-0047



### PARCEL #28 DESCRIPTION

Parcel #28 containing 19.22 Acres, "more or less", located in the N $\frac{1}{2}$  of SW $\frac{1}{4}$  AND the N $\frac{1}{2}$  of SE $\frac{1}{4}$  AND the S $\frac{1}{2}$  of NW $\frac{1}{4}$  of Section 5, Township 15 North, Range 23 East, Indian Meridian, Cherokee County, Oklahoma, described as: beginning at the northeast corner of the NW $\frac{1}{4}$  NE $\frac{1}{4}$  NW $\frac{1}{4}$  SE $\frac{1}{4}$  of said Section 5, being a std C of E brass cap (mon 4/5); thence S89°56'37"W, 990.08 feet (cs-4) to the northwest corner of the SE $\frac{1}{4}$  being a std. C of E brass cap (mon 3/4); thence S89°56'37"W, 664.52 feet (cs-3) to the northeast corner of the NW $\frac{1}{4}$  NE $\frac{1}{4}$  SW $\frac{1}{4}$  being a std. C of E brass cap (mon 2/3); thence N45°20'21"W, 749.54 feet (cs-2) to a 5/8" iron pin with aluminum cap in a gravel road; thence S18°17'33"E, 512.20 feet (D-1) along gravel road to a 5/8" iron pin with aluminum cap; thence S42°26'38"E, 727.29 feet (D-2) along gravel road to a 5/8" iron pin with aluminum cap; thence S69°07'24"E, 319.14 feet (D-3) along gravel road to a 5/8" iron pin with aluminum cap; thence S87°36'24"E, 223.27 feet (D-4) along gravel road to 5/8" iron pin with aluminum cap; thence N64°14'11"E, 234.97 feet (D-5) along gravel road to 5/8" iron pin with aluminum cap; thence N57°06'07"E, 955.40 feet (D-6) to the point of beginning.

Field Book No. 4-274

Date 11-88

### CERTIFICATE OF SURVEY

I hereby certify that the above plat is a true and correct representation of the survey.

**SCOTT & ASSOCIATES INC.**  
**LAND SURVEYORS**

—LEGEND—

- △ MONUMENT
- ORIGINAL CORNER
- IRON PIN w/CAP

**U.S. ARMY CORPS OF ENGINEERS**  
**TULSA DISTRICT**

BASIL E. SCOTT JR. L.S. 545

# REFERENCES

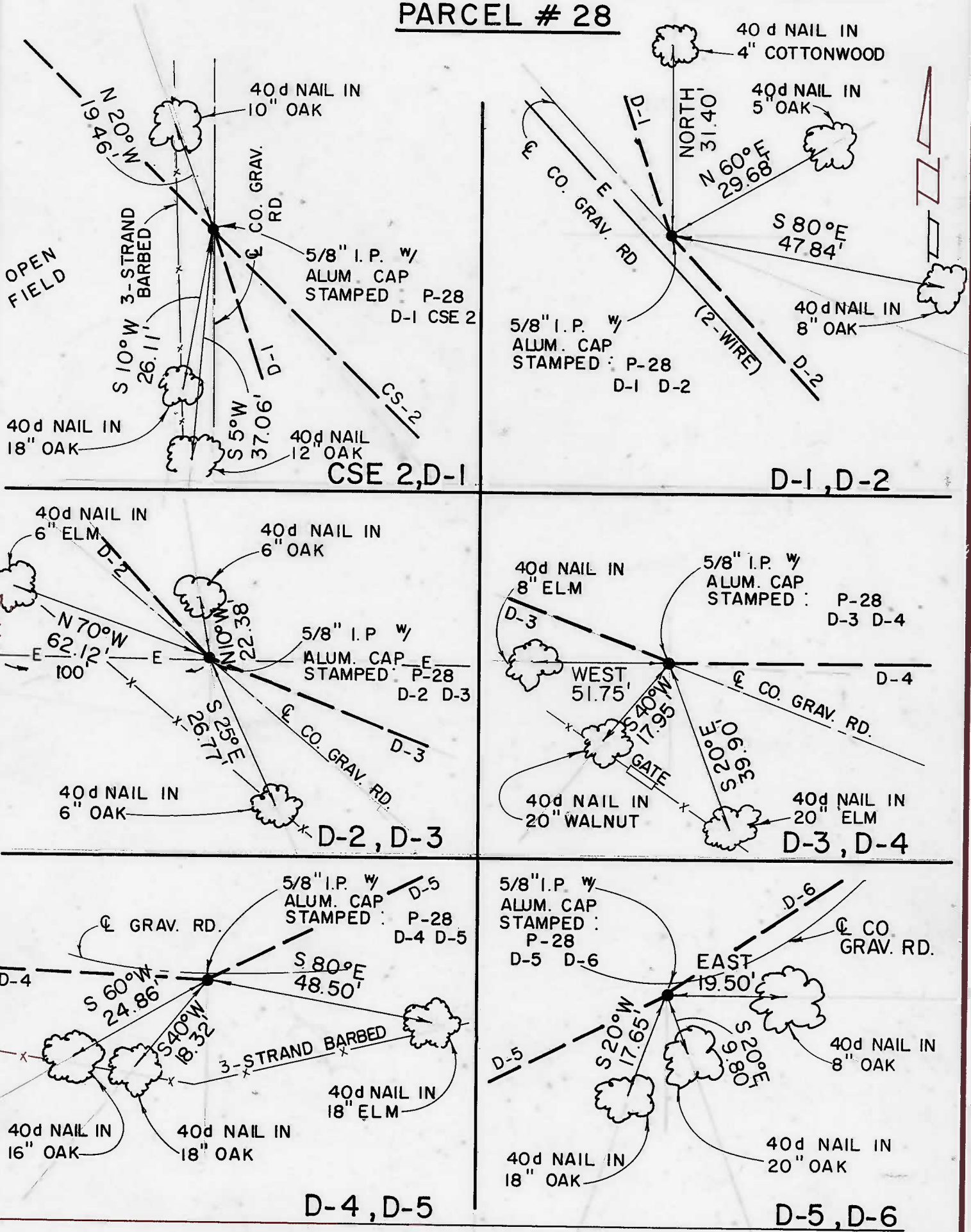
## PARTIAL BOUNDARY SURVEYS TENKILLER LAKE OKLA. SEC. 5 T-15 -N R-23 -E

COUNTY CHEROKEE

D.O. NO. 0001

Performed Under Contract No. DACA 56-88-D-0047

### PARCEL # 28



Field Book No. 4-274

Date 11-88

#### CERTIFICATE OF SURVEY

I Herby Certify That The Above Plat is a True and Correct Representation of the Survey.

*Basil E. Scott Jr.*  
BASIL E. SCOTT JR. L.S. 545

**SCOTT & ASSOCIATES, INC.**  
LAND SURVEYORS

U.S. ARMY CORPS OF ENGINEERS  
TULSA DISTRICT

#### — LEGEND —

- △ MONUMENT
- ORIGINAL CORNER
- IRON PIN W/ CAP