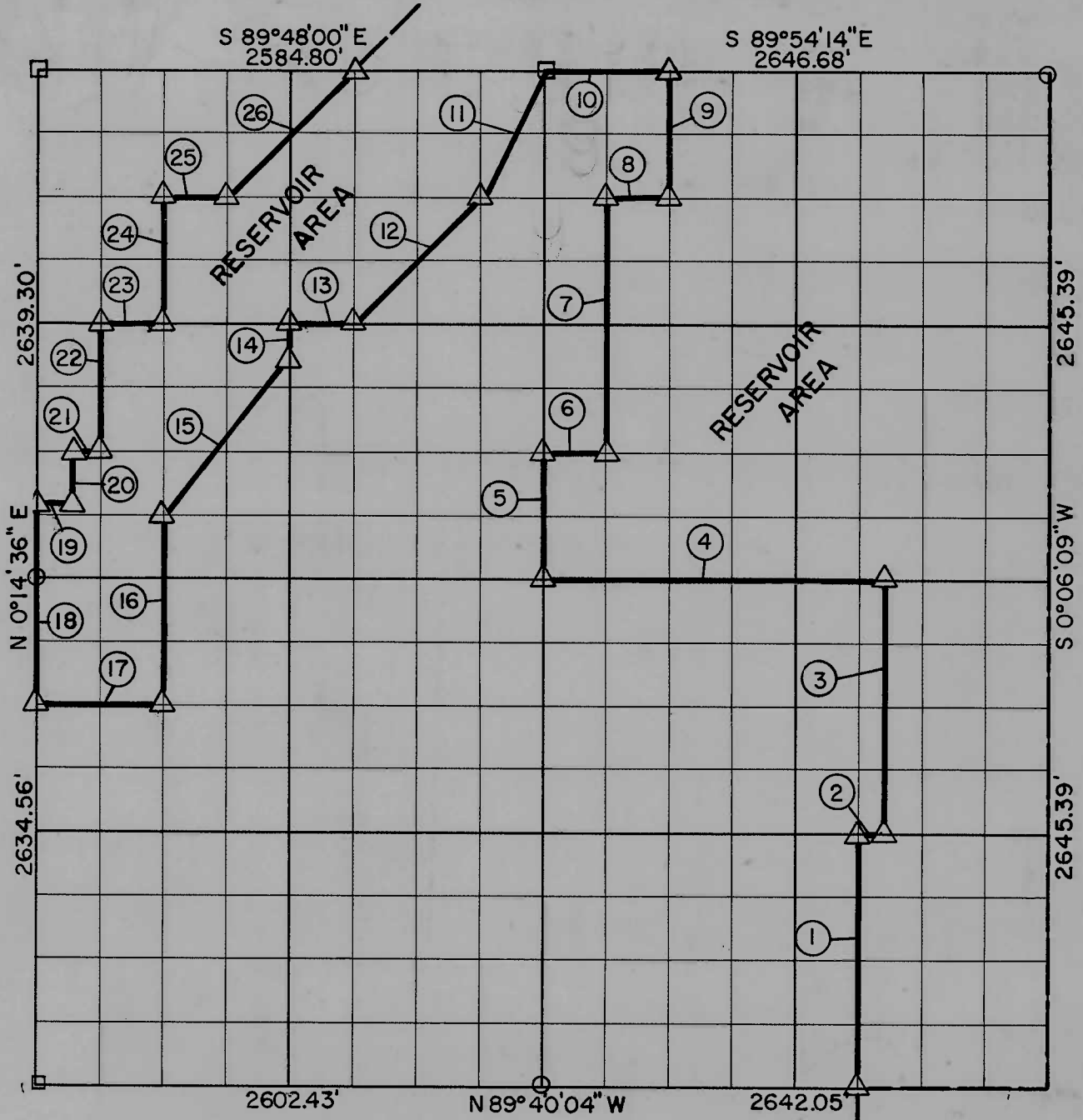


SEC. 7, T15 N, R23 E, CHEROKEE COUNTY






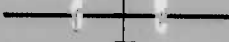

Course No.	Distance	Bearing	Course No.	Distance	Bearing
1	1321.78'	N 0°05'00" E	20	312.93'	N 0°04'37" E
2	165.20'	S 89°43'36" E	21	66.00'	S 89°47'22" E
3	1322.00'	N 0°05'11" E	22	659.84'	N 0°01'36" E
4	1817.99'	N 89°47'09" W	23	330.00'	S 89°47'35" E
5	659.99'	N 0°03'07" E	24	659.86'	N 0°01'36" E
6	330.62'	S 89°48'56" E	25	330.00'	S 89°47'47" E
7	1320.32'	N 0°03'30" E	26	932.47'	N 45°09'18" E
8	330.77'	S 89°52'28" E			
9	660.33'	N 0°03'52" E			
10	661.67'	N 89°54'14" W			
11	737.45'	S 26°42'06" W			
12	932.39'	S 45°13'41" W			
13	330.70'	N 89°47'35" W			
14	160.00'	S 0°01'37" W			
15	1059.48'	S 38°34'28" W			
16	988.89'	S 0°01'36" W			
17	613.93'	N 89°45'22" W			
18	988.55'	N 0°14'36" E			
19	213.85'	S 89°47'16" E			

Book No. 4 - 256

Date: July, 1965

I, James E. Curry, a Registered Professional Engineer, do hereby certify that the above plat is a true and accurate survey of Sec. 7, T15N, R23E as made under my supervision.

LEGEND

-  5/8" Rods w/Caps
-  C. of E. Mon.
-  Measured Line
-  Calculated Line
-  Orig. Cor. Stone

James E. Curry
 JAMES E. CURRY
 Reg. Prof. Eng'r. No. 1872