

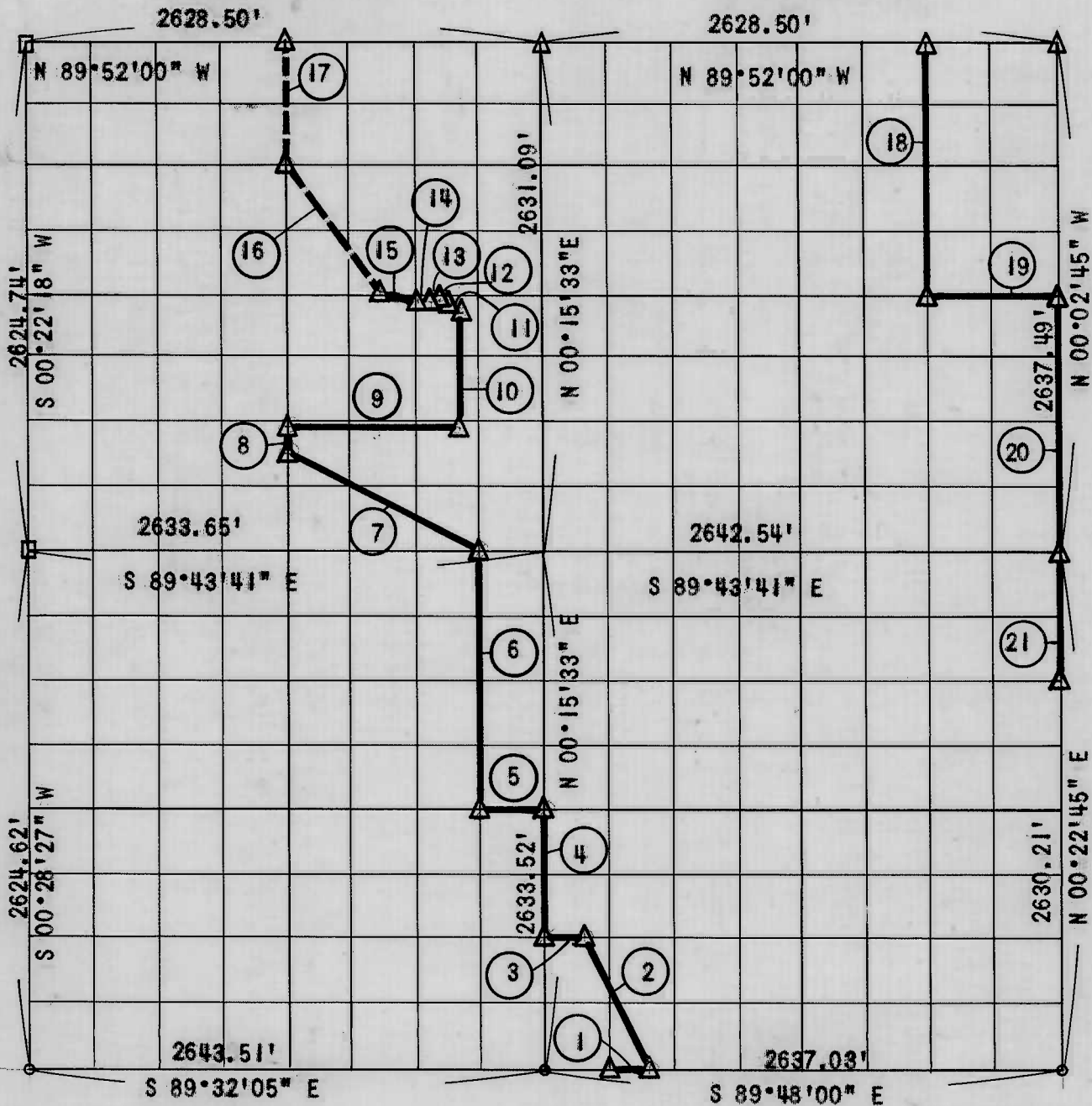
TENKILLER LAKE

ILLINOIS RIVER, OKLAHOMA

Performed Under Contract Number DACW 56-72-C-0010

SEC. 11 T16N R22E

CHEROKEE COUNTY



Course No.	Distance	Bearing	Course No.	Distance	Bearing
1	209.63'	S 89°48'00" E	14	59.00'	N 88°35'30" W
2	749.84'	N 28°24'11" W	15	188.00'	N 71°20'30" W
3	179.60'	N 89°46'55" W	16	807.97'	N 36°37'41" W
4	658.38'	N 00°15'33" E	17	656.98'	N 00°18'55" E
5	329.82'	N 89°37'52" W	18	1318.31'	S 00°01'49" W
6	1316.20'	N 00°17'10" E	19	658.68'	S 89°47'50" E
7	1103.38'	N 63°12'15" W	20	1318.75'	S 00°02'45" E
8	139.02'	N 00°24'30" E	21	657.55'	S 00°22'45" W
9	851.33'	S 89°35'30" E			
10	558.00'	N 00°24'30" E			
11	74.00'	N 28°07'30" W			
12	60.00'	N 72°05'30" W			
13	37.00'	S 79°29'30" W			

Field Book Number 4-288

Date: November 15, 1971

CERTIFICATE OF SURVEY

I HEREBY CERTIFY THAT THE ABOVE PLAT IS A TRUE AND CORRECT REPRESENTATION OF THE SURVEY MADE IN SECTION 11, T16N, R22E, CHEROKEE COUNTY, OKLAHOMA.

SULLIVAN AND GILBERT, INC.
Under the Supervision of
U.S. ARMY ENGINEER DISTRICT, TULSA
CORPS OF ENGINEERS

LEGEND

- △ Monument
- Original Corner
- Iron Pin

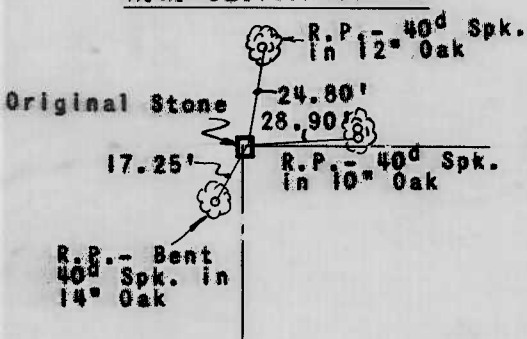
William A. Gilbert
REGISTERED PROFESSIONAL ENGINEER

TENKILLER LAKE
 ILLINOIS RIVER, OKLAHOMA
 SECTION AND QUARTER SECTION CORNER
 REFERENCES FOR

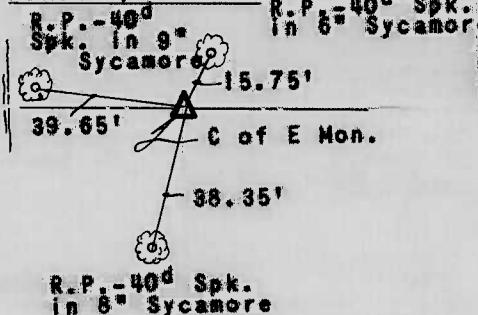
SECTION 11, T16N, R22E

CHEROKEE COUNTY

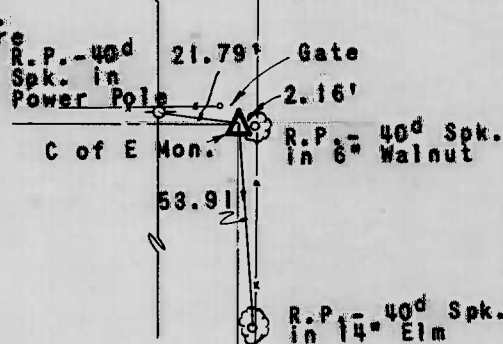
N.W. SECTION CORNER



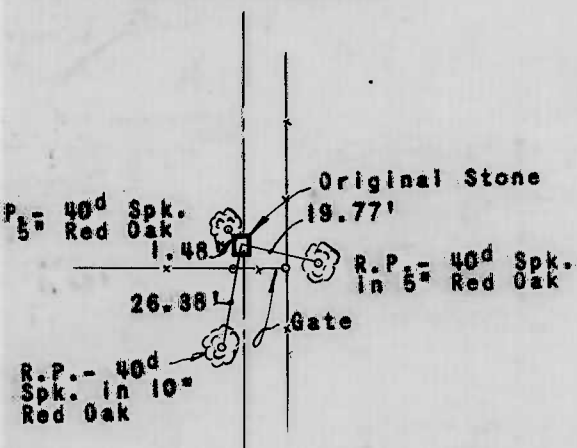
NORTH 1/4 CORNER



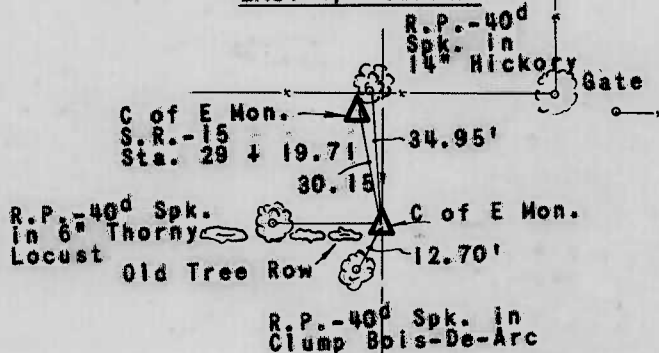
N.E. SECTION CORNER



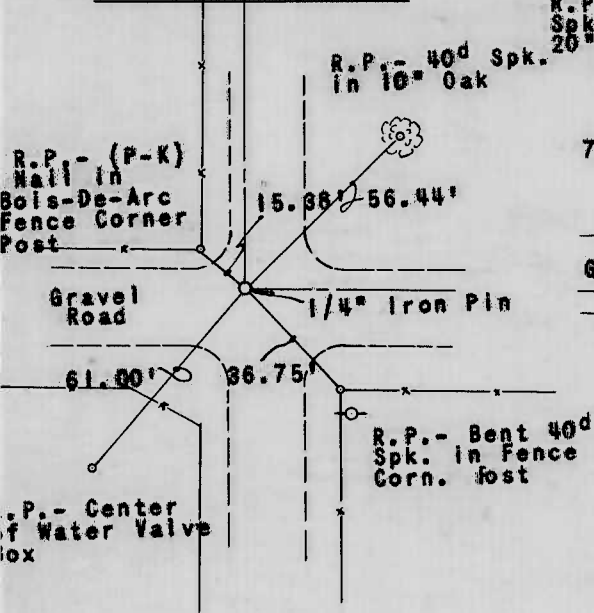
WEST 1/4 CORNER



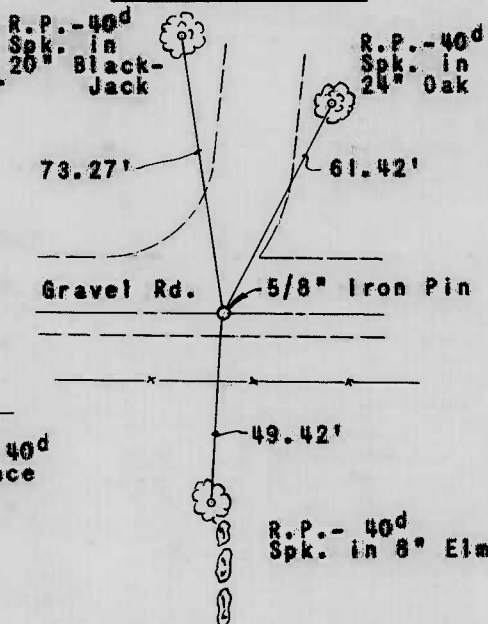
EAST 1/4 CORNER



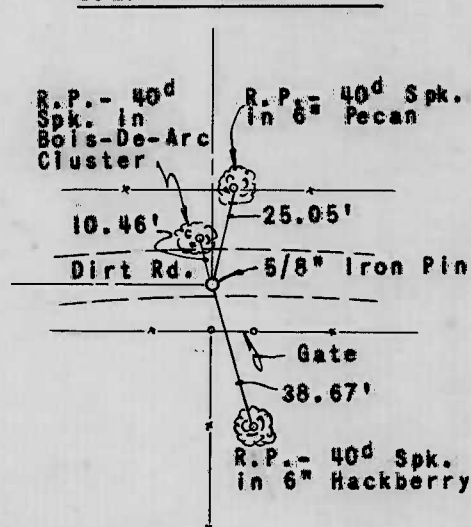
S.W. SECTION CORNER



SOUTH 1/4 CORNER



S.E. SECTION CORNER



Scale: 1" = 50'
 Date: November 15, 1971
 Field Book No. 4-288