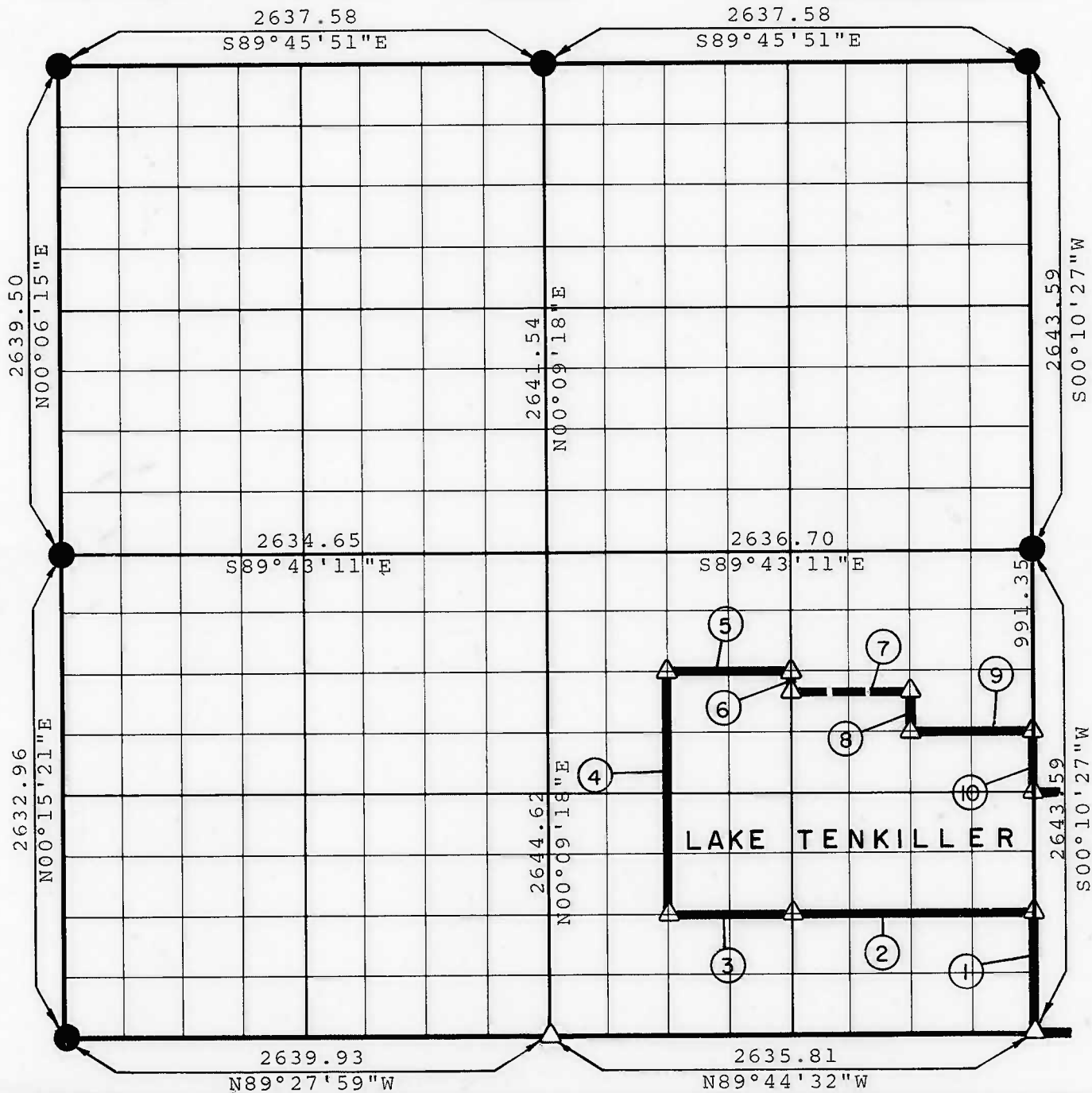


**PARTIAL BOUNDARY SURVEYS  
TENKILLER LAKE  
ILLINOIS RIVER, OKLAHOMA**

Performed Under Contract Number DACW 56-77-C-O-0126

**SEC. 23      T 16 N      R 22 E      COUNTY CHEROKEE**



Course No.	Distance	Bearing	Course No.	Distance	Bearing
1	660.90	N00°10'27"E			
2	1318.01	N89°44'13"W			
3	659.01	N89°44'13"W			
4	1322.18	N00°09'36"E			
5	659.12	S89°43'33"E			
6	82.63	S00°09'53"W			
7	659.11	S89°43'35"E			
8	247.86	S00°10'10"W			
9	659.09	S89°43'43"E			
10	330.45	S00°10'27"W			

CERTIFICATE OF SURVEY Field Book No. 4-321 Date AUG. 1977

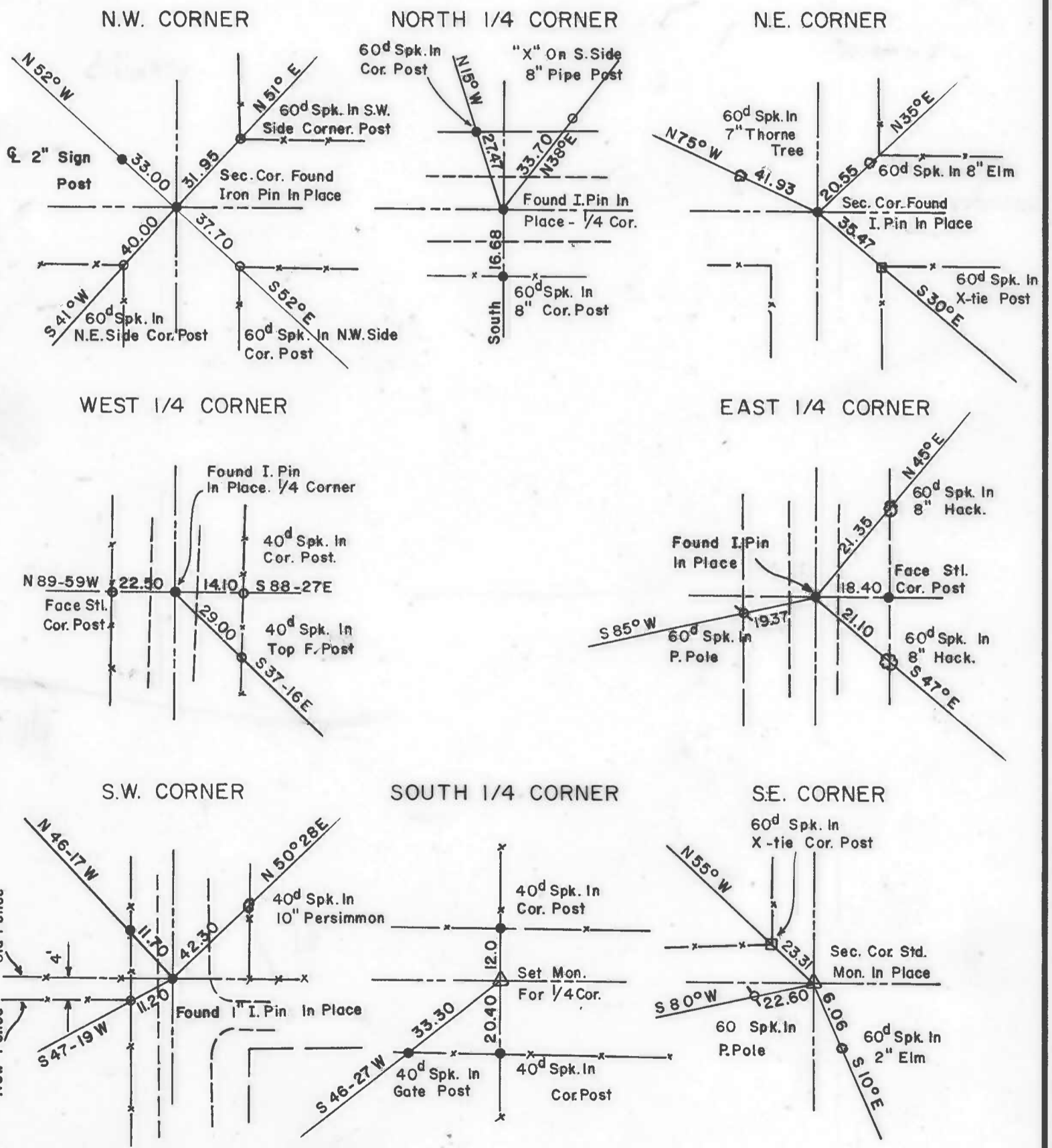
I HEREBY CERTIFY THAT THE ABOVE PLAT IS TRUE AND CORRECT REPRESENTATION OF THE SURVEY MADE IN SECTION 23, T. 16 N., R. 22 E., CHEROKEE COUNTY, OKLAHOMA.

W. VAUGHAN  
L. S. 220  
REGISTERED L. S. NO. 3  
OKLAHOMA

**BRAWLEY ENGINEERING CORP.**  
**CONSULTING ENGINEERS**  
Under the Supervision of  
**U.S. ARMY ENGINEER DISTRICT, TULSA**  
**CORPS OF ENGINEERS**

**LEGEND**  
△ MONUMENT  
□ ORIGINAL CORNER  
● IRON PIN

TENKILLER LAKE  
ILLINOIS RIVER, OKLAHOMA  
SECTION AND QUARTER SECTION CORNER  
REFERENCES FOR  
SEC. 23 , T 16 N, R 22 E, COUNTY - CHEROKEE  
PERFORMED UNDER CONTRACT NUMBER DACW 56-77-C-0126



CERTIFICATE OF SURVEY  
 I HEREBY CERTIFY THAT THE ABOVE PLATS ARE TRUE AND CORRECT REPRESENTATIONS OF THE SURVEY MADE IN SECTION 23, T 16 N, R 22 E, CHEROKEE COUNTY, OKLAHOMA, L. S. 380

*William E. Brawley*  
 REGISTERED L. S. No. 380

Field Book No. 4-321 Date: Aug., 1977

**BRAWLEY ENGINEERING CORP**  
 CONSULTING ENGINEERS

Under the Supervision of  
**U.S. ARMY ENGINEER DISTRICT, TULSA**  
**CORPS OF ENGINEERS**

**LEGEND**  
 □ ORIGINAL CORNER  
 △ MONUMENT  
 ● IRON PIN