

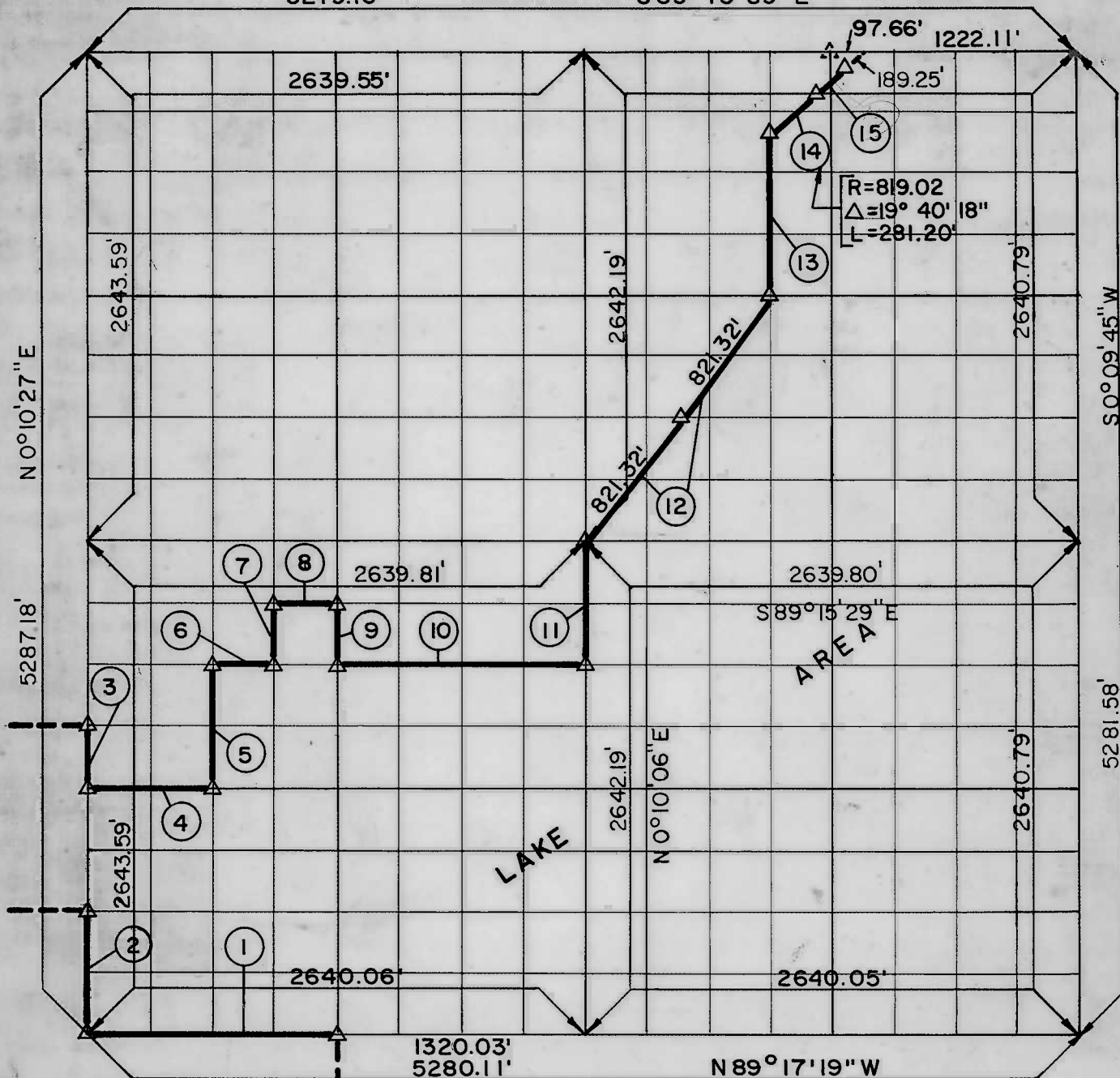
PARTIAL BOUNDARY SURVEYS TENKILLER LAKE AREA "B"

Performed Under Contract Number DACW 56-72-C-0015

SEC. 24 T 16 N, R 22 E COUNTY, CHEROKEE

5279.10'

S 89° 13' 39" E



Course No.	Distance	Bearing	Course No.	Distance	Bearing
1	1320.03'	N 89° 17' 19" W	14	CURVE	SEE PLAT
2	660.90'	N 00° 10' 27" E	15	326.79'	N 40° 39' 30" E
3	330.45'	S 00° 10' 27" W			
4	659.98'	S 89° 16' 24" E			
5	660.81'	N 00° 10' 22" E			
6	329.98'	S 89° 15' 57" E			
7	330.38'	N 00° 10' 19" E			
8	329.98'	S 89° 15' 43" E			
9	330.36'	S 00° 10' 16" W			
10	1319.94'	S 89° 15' 57" E			
11	660.55'	N 00° 10' 06" E			
12	1642.64'	N 37° 13' 24" E			
13	889.16'	N 00° 09' 58" E			

CERTIFICATE OF SURVEY

I HEREBY CERTIFY THAT THE ABOVE PLAT IS A TRUE AND CORRECT REPRESENTATION OF THE SURVEY MADE IN SECTION 24, T 16 N, R 22 E, CHEROKEE COUNTY, OKLAHOMA.

Field Book No. 4-273

Date Jan. 5, 1972

CLINE L. MANSUR-STEELE-WILLIAMS, INC.
CONSULTING ENGINEERS

LEGEND
 ▲ MONUMENT
 □ ORIGINAL CORNER
 ○ IRON PIN

Under the Supervision of

U.S. ARMY ENGINEER DISTRICT, TULSA
CORPS OF ENGINEERS

Cline Mansur
REGISTERED PROFESSIONAL ENGINEER

