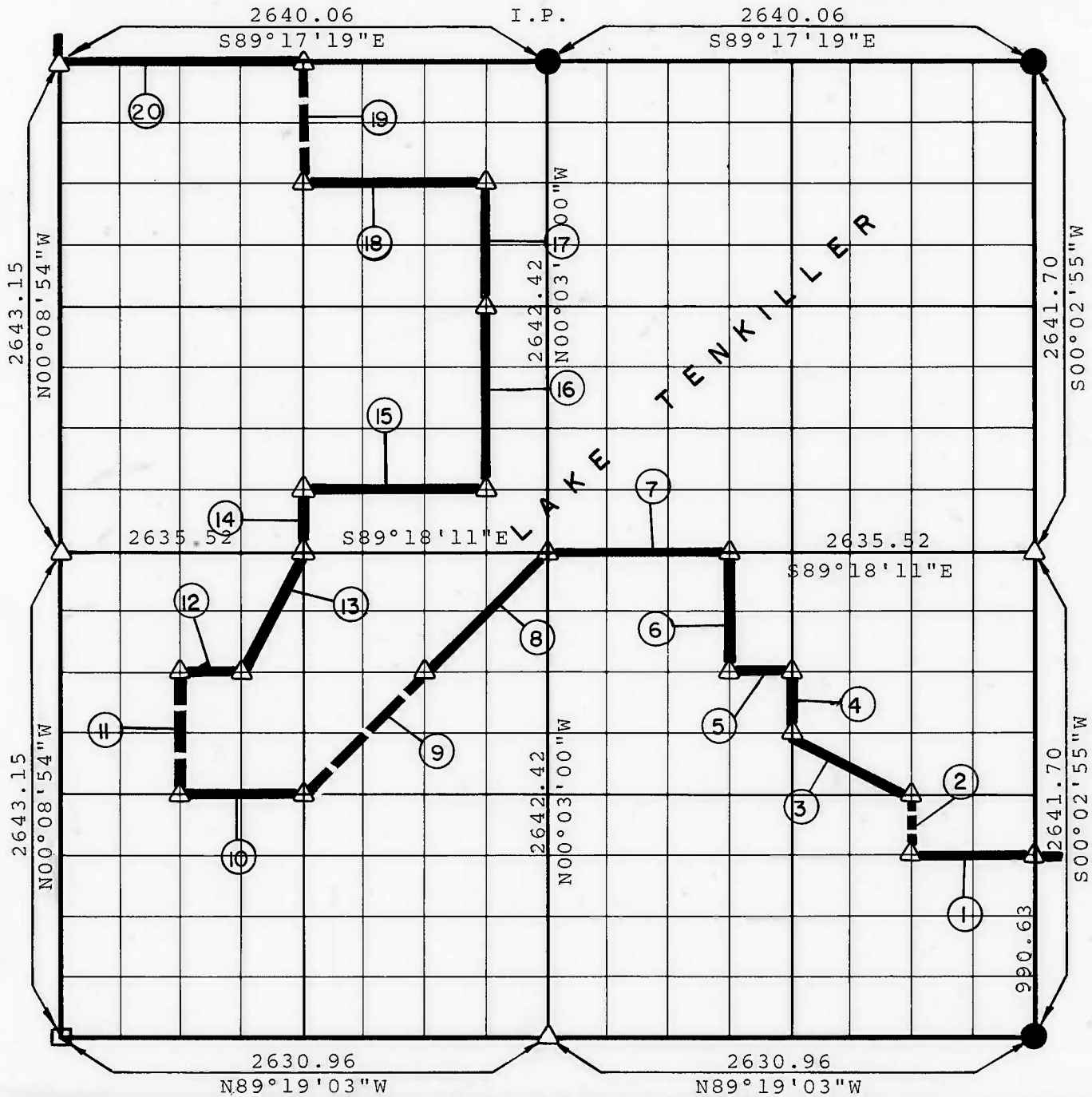


**PARTIAL BOUNDARY SURVEYS
TENKILLER LAKE
ILLINOIS RIVER, OKLAHOMA**

Performed Under Contract Number DACW 56-77-C-O-0126

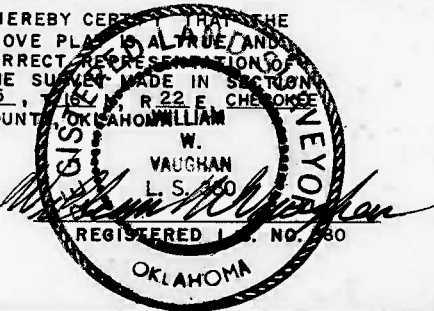
SEC. 25 T 16 N R 22 E COUNTY CHEROKEE



Course No.	Distance	Bearing	Course No.	Distance	Bearing
1	658.17	N89°18'45"W	11	660.74	N00°07'25"W
2	330.24	N00°01'27"E	12	329.30	S89°18'24"E
3	740.05	N62°48'31"W	13	734.13	N26°32'59"E
4	330.26	N00°00'02"W	14	330.35	N00°05'56"W
5	329.24	N89°18'24"W	15	988.52	S89°18'05"E
6	660.53	N00°00'46"W	16	990.94	N00°03'44"W
7	988.32	N89°18'11"W	17	660.63	N00°03'44"W
8	926.59	S45°13'08"W	18	989.59	N89°17'32"W
9	926.58	S45°13'08"W	19	660.70	N00°05'56"W
10	658.31	N89°18'39"W	20	1320.03	N89°17'19"W

CERTIFICATE OF SURVEY Field Book No. 4-322 Date AUG. 1977

I HEREBY CERTIFY THAT THE ABOVE PLATS ARE A TRUE AND CORRECT REPRESENTATION OF THE SURVEY MADE IN SECTION 25, T. 16 N., R. 22 E., CHEROKEE COUNTY, OKLAHOMA.



**BRAWLEY ENGINEERING CORP.
CONSULTING ENGINEERS**

Under the Supervision of

**U.S. ARMY ENGINEER DISTRICT, TULSA
CORPS OF ENGINEERS**

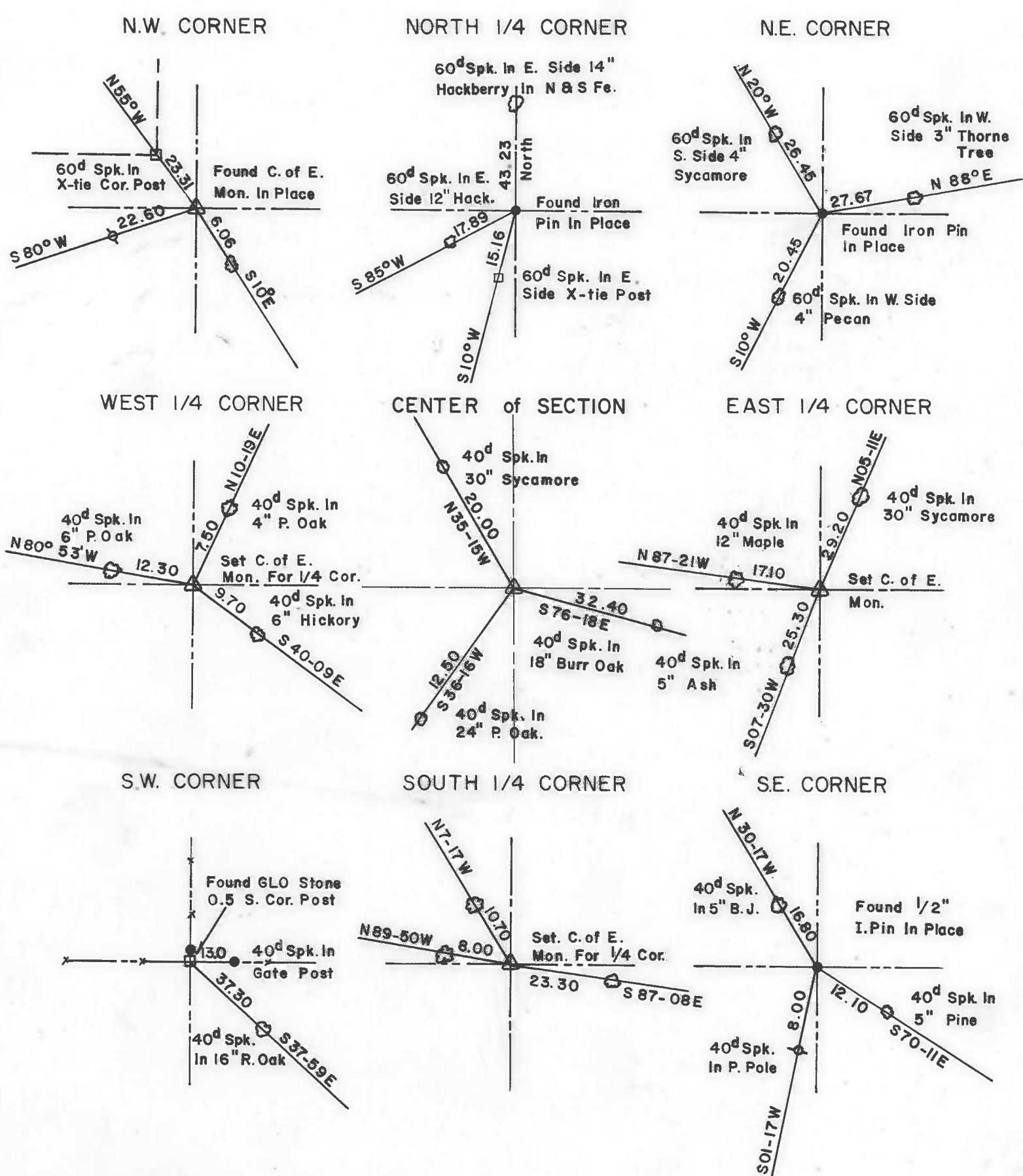
LEGEND
 Δ MONUMENT
 □ ORIGINAL CORNER
 ● IRON PIN

TENKILLER LAKE
ILLINOIS RIVER, OKLAHOMA

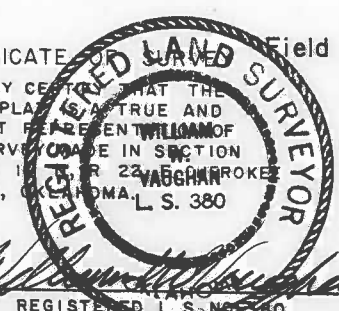
SECTION AND QUARTER SECTION CORNER
REFERENCES FOR

SEC. 25 , T 16 N, R 22 E, COUNTY - CHEROKEE

PERFORMED UNDER CONTRACT NUMBER DACW 56-77-C-0126



CERTIFICATE OF SURVEY
 I HEREBY CERTIFY THAT THE ABOVE PLAT IS TRUE AND CORRECT REPRESENTATION OF THE SURVEY MADE IN SECTION 25, T 16 N, R 22 E, CHEROKEE COUNTY, OKLAHOMA. L. S. 380



Field Book No. 4-322

Date: Aug., 1977

BRAWLEY ENGINEERING CORP.
CONSULTING ENGINEERS

Under the Supervision of

U.S. ARMY ENGINEER DISTRICT, TULSA
CORPS OF ENGINEERS

LEGEND

- ORIGINAL CORNER
- △ MONUMENT
- IRON PIN

REGISTERED L. S. No. 380