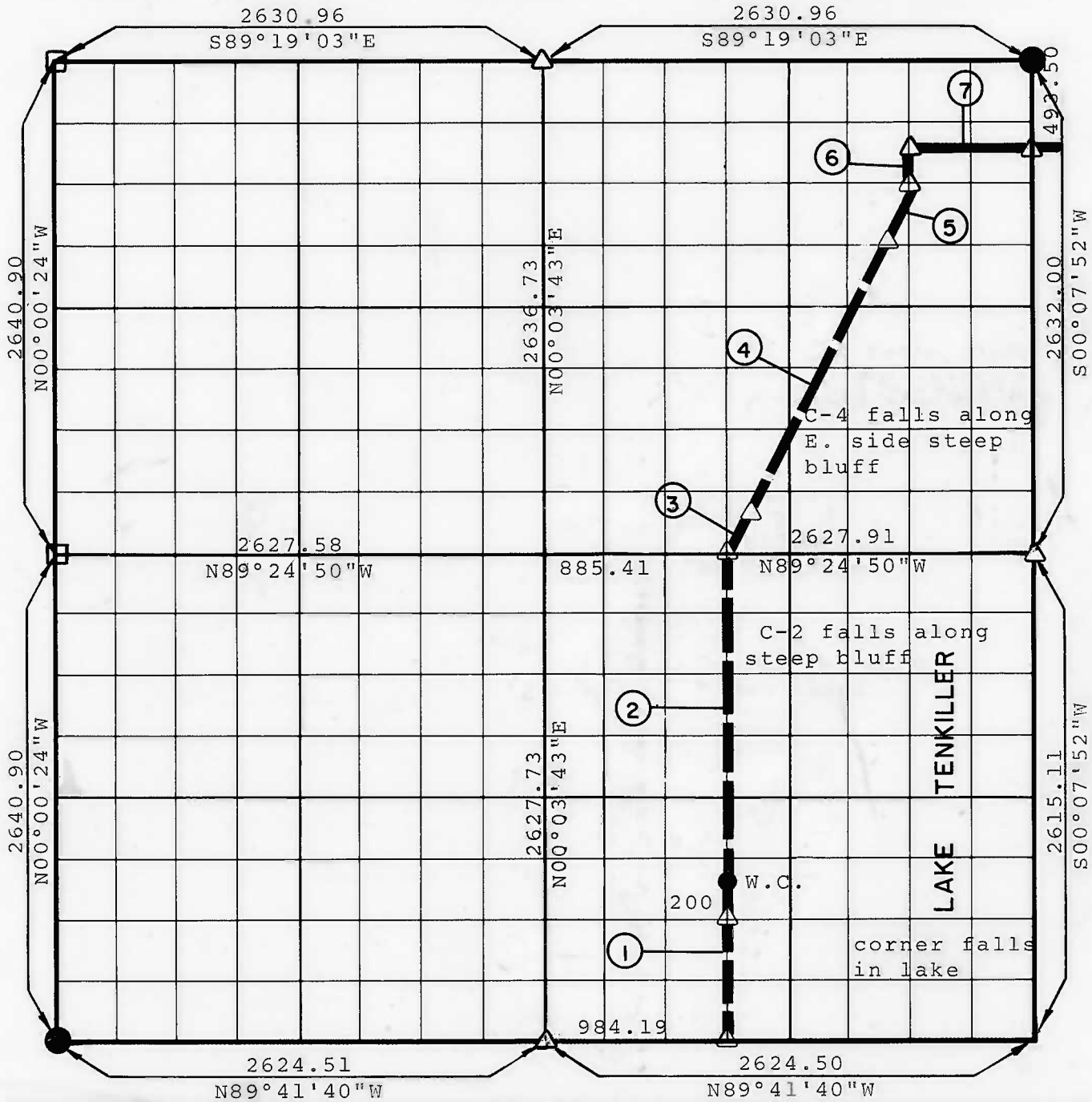


**PARTIAL BOUNDARY SURVEYS
TENKILLER LAKE
ILLINOIS RIVER, OKLAHOMA**

Performed Under Contract Number DACW 56-77-C-0-0126

SEC. 36 T 16 N R 22 E COUNTY CHEROKEE



Course No.	Distance	Bearing	Course No.	Distance	Bearing
1	655.77	N00°05'21"E			
2	1967.31	N00°05'21"E			
3	200.00	N26°43'23"E			
4	1889.82	N26°43'23"E			
5	110.00	N26°43'23"E			
6	164.58	N00°06'50"E			
7	657.60	S89°19'57"E			

CERTIFICATE OF SURVEY Field Book No. 4-323 Date AUG, 1977

I HEREBY CERTIFY THAT ABOVE PLAT IS A TRUE AND CORRECT REPRESENTATION OF THE SURVEY MADE IN SECTION 36, T. 16 N., R. 22 E., CHEROKEE COUNTY, OKLAHOMA WILLIAM W. VAUGHAN L. S. 380 REGISTERED L. S. NO. 38 OKLAHOMA

**BRAWLEY ENGINEERING CORP
CONSULTING ENGINEERS**
Under the Supervision of
**U.S. ARMY ENGINEER DISTRICT, TULSA
CORPS OF ENGINEERS**

LEGEND
△ MONUMENT
□ ORIGINAL CORNER
● IRON PIN

TENKILLER LAKE
ILLINOIS RIVER, OKLAHOMA

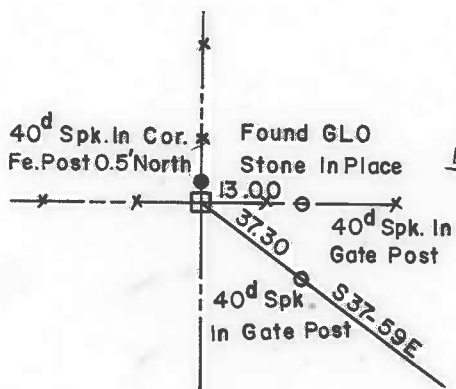
SECTION AND QUARTER SECTION CORNER
REFERENCES FOR

SEC.36 , T 16 N, R 22 E, COUNTY - CHEROKEE

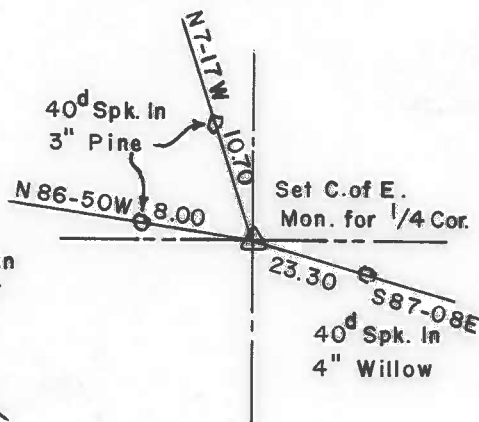
PERFORMED UNDER CONTRACT NUMBER DACW 56-77-C-0126



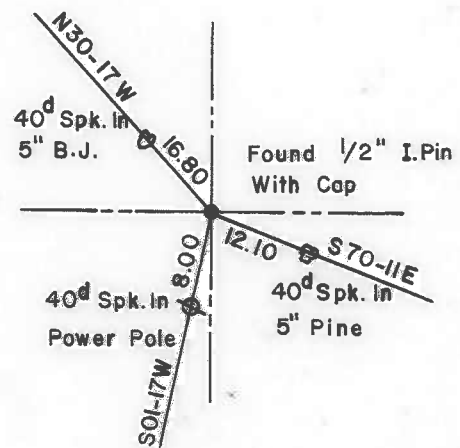
N.W. CORNER



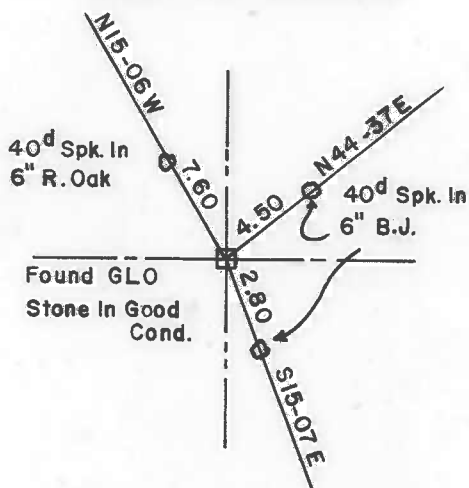
NORTH 1/4 CORNER



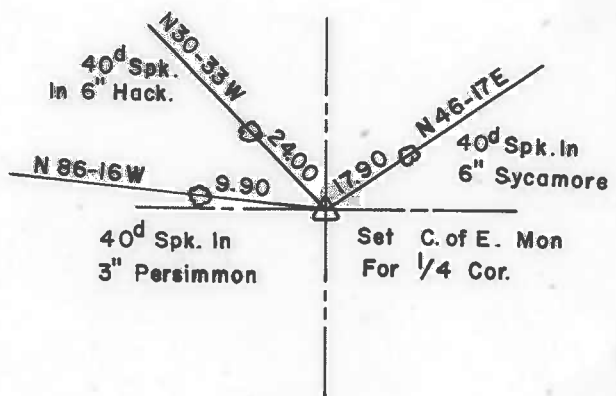
N.E. CORNER



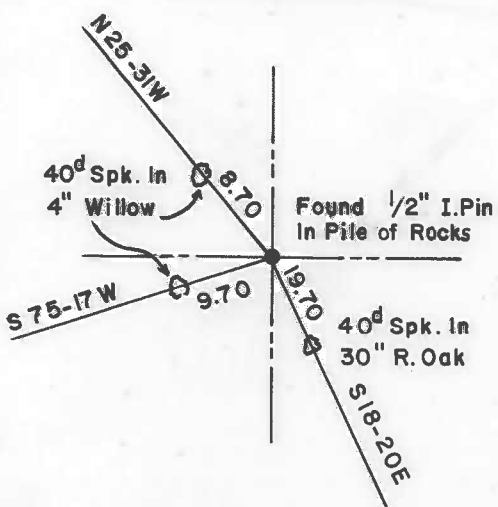
WEST 1/4 CORNER



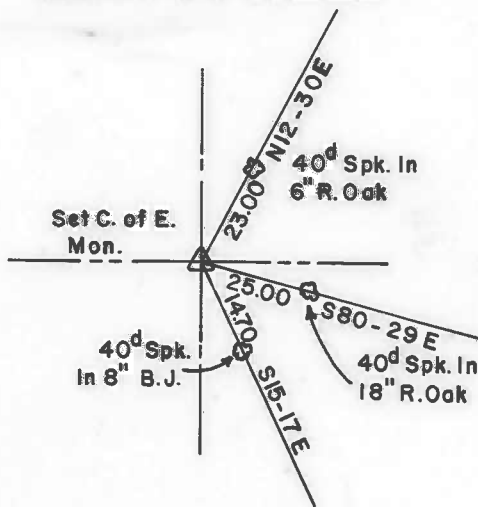
EAST 1/4 CORNER



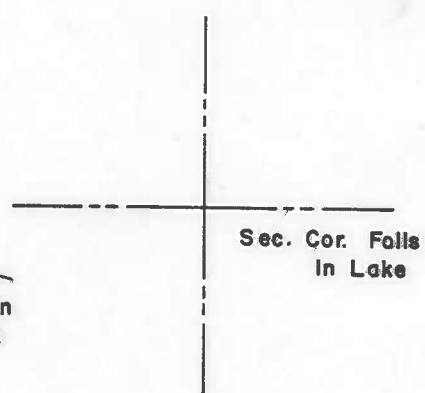
S.W. CORNER



SOUTH 1/4 CORNER



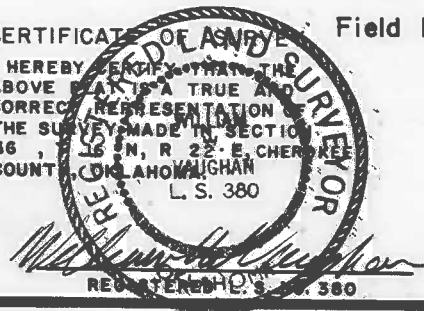
S.E. CORNER



CERTIFICATE OF SURVEY Field Book No.4-323

Date: Aug., 1977

I HEREBY CERTIFY THAT THE ABOVE IS A TRUE AND CORRECT REPRESENTATION OF THE SURVEY MADE IN SECTION 36, T 16 N, R 22 E, CHEROKEE COUNTY, OKLAHOMA.



BRAWLEY ENGINEERING CORP
CONSULTING ENGINEERS

Under the Supervision of
U.S. ARMY ENGINEER DISTRICT, TULSA
CORPS OF ENGINEERS

LEGEND

- ORIGINAL CORNER
- △ MONUMENT
- IRON PIN