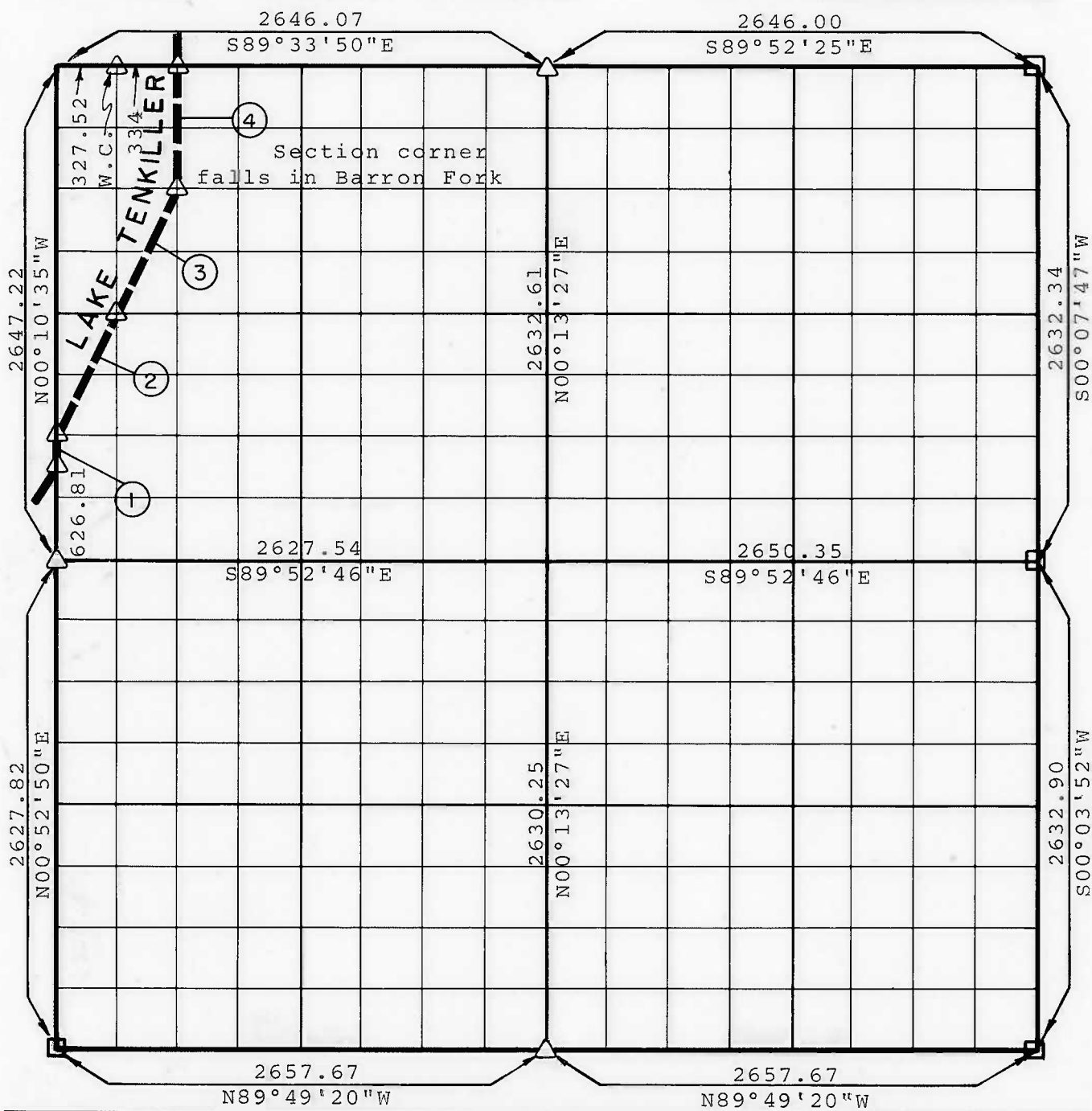


**PARTIAL BOUNDARY SURVEYS  
TENKILLER LAKE  
ILLINOIS RIVER, OKLAHOMA**

Performed Under Contract Number DACW 56-77-C-0-0126

SEC. 17      T 16 N      R 23 E      COUNTY CHEROKEE



Course No.	Distance	Bearing	Course No.	Distance	Bearing
1	35.00	N00°10'35"W			
2	736.97	N26°23'07"E			
3	736.71	N26°30'13"E			
4	660.89	N00°04'34"W			

CERTIFICATE OF SURVEY Field Book No. 4-317 Date AUG. 1977

I HEREBY CERTIFY THAT THE ABOVE PLATS AND RECORDS CORRECTLY REPRESENT THE SURVEY MADE IN SECTION 17, T. 16 N. R. 23 E. CHEROKEE COUNTY, OKLAHOMA.  
  
W. VAUGHAN  
L. S. 380  
REGISTERED L. S. NO. 38  
OKLAHOMA

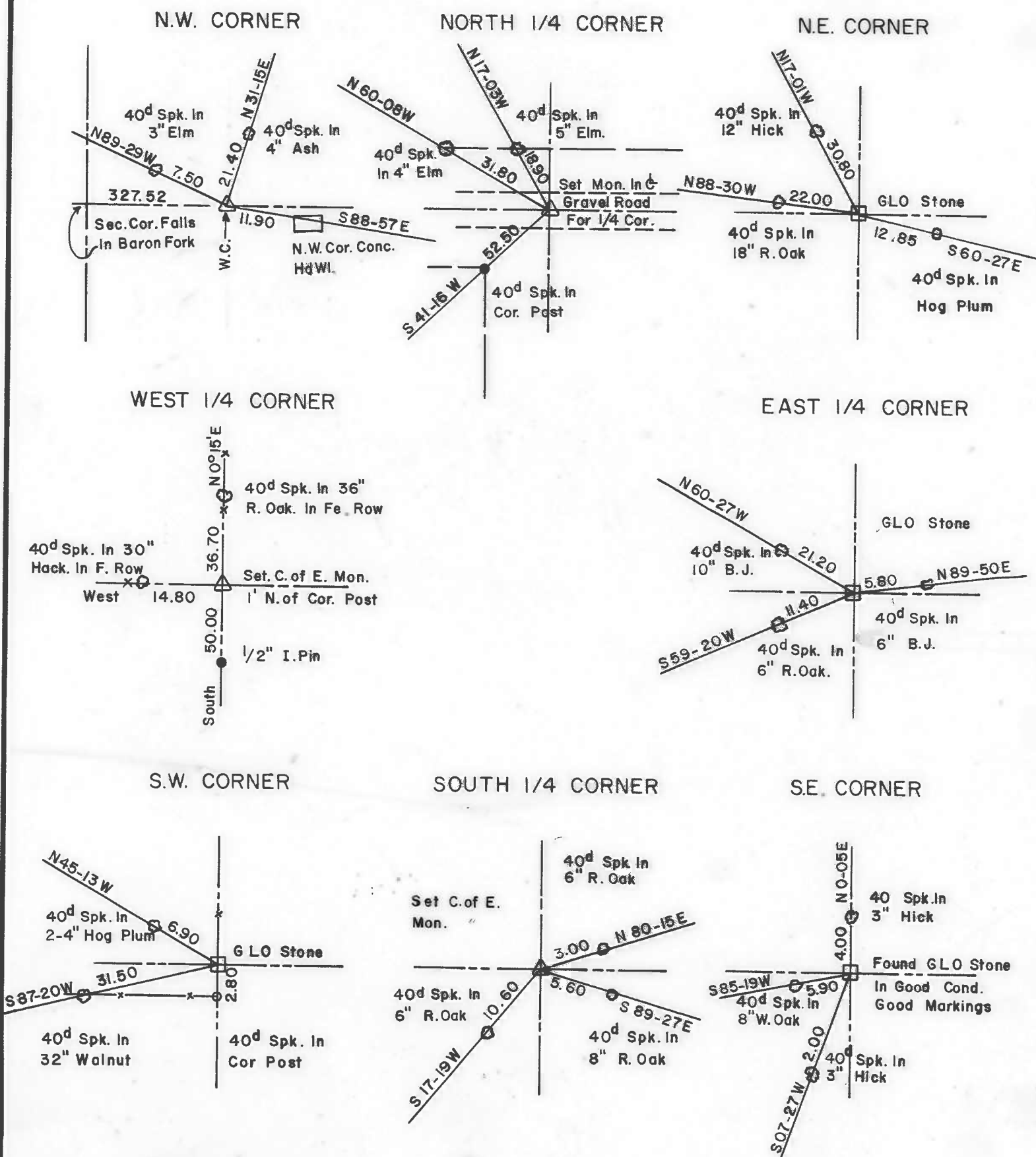
**BRAWLEY ENGINEERING CORP.  
CONSULTING ENGINEERS**

Under the Supervision of

**U.S. ARMY ENGINEER DISTRICT, TULSA  
CORPS OF ENGINEERS**

**LEGEND**  
△ MONUMENT  
□ ORIGINAL CORNER  
● IRON PIN

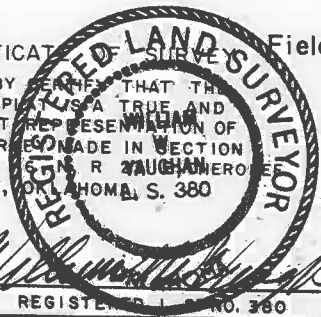
**TENKILLER LAKE**  
 ILLINOIS RIVER, OKLAHOMA  
 SECTION AND QUARTER SECTION CORNER  
 REFERENCES FOR  
 SEC. 17 , T 16 N, R 23 E, COUNTY -CHEROKEE  
 PERFORMED UNDER CONTRACT NUMBER DACW 56-77-C-0126



CERTIFICATE OF SURVEY Field Book No. 4-317

Date: Aug., 1977

I HEREBY CERTIFY THAT THE ABOVE PLATS ARE A TRUE AND CORRECT REPRESENTATION OF THE SURVEY MADE IN SECTION 17, T 16 N, R 23 E, CHEROKEE COUNTY, OKLAHOMA, S. 360



**BRAWLEY ENGINEERING CORP**  
 CONSULTING ENGINEERS

Under the Supervision of

**U.S. ARMY ENGINEER DISTRICT, TULSA**  
 CORPS OF ENGINEERS

**LEGEND**

- ORIGINAL CORNER
- △ MONUMENT
- IRON PIN