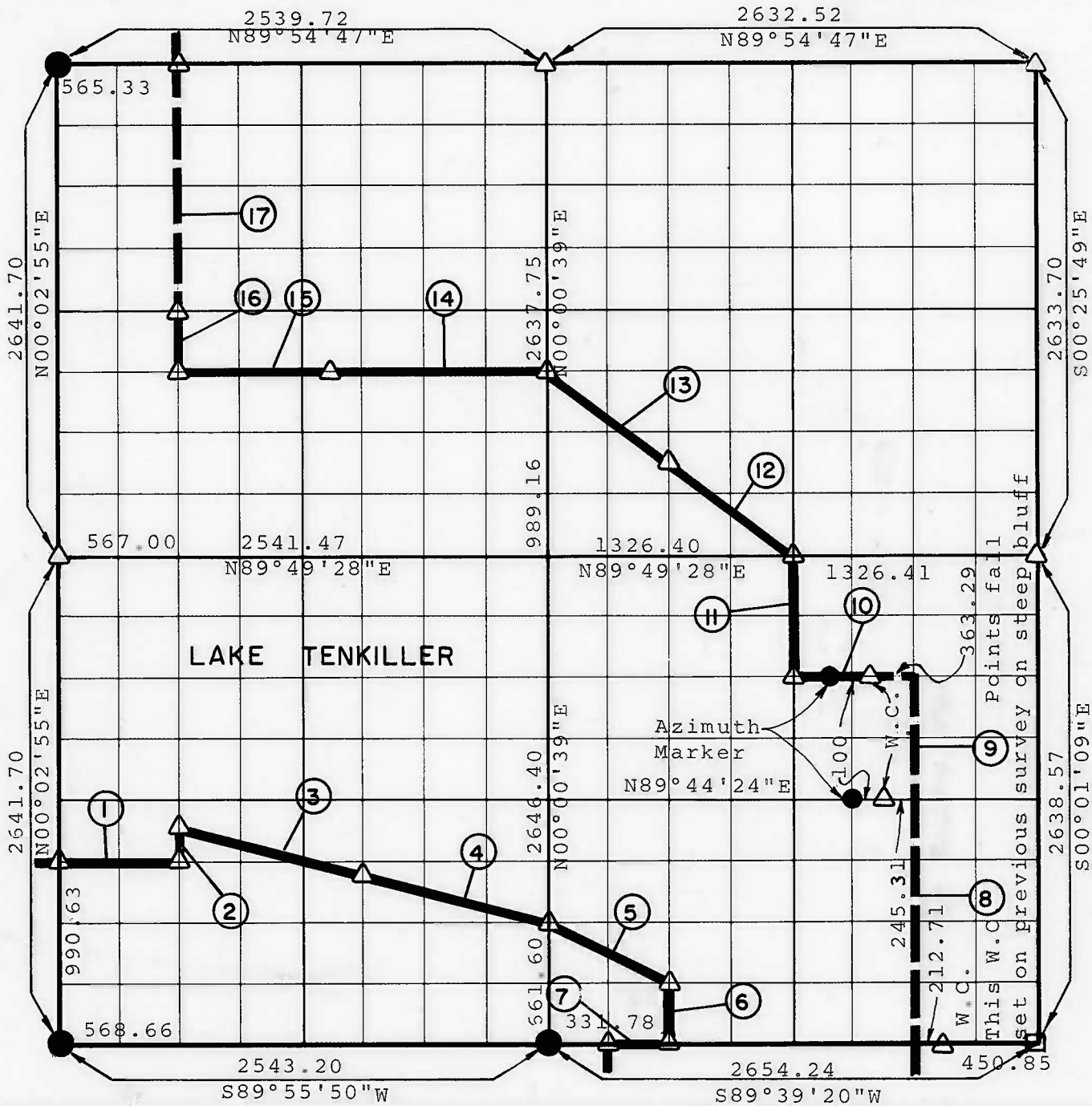


**PARTIAL BOUNDARY SURVEYS
TENKILLER LAKE
ILLINOIS RIVER, OKLAHOMA**

Performed Under Contract Number DACW 56-77-C-O-0126

SEC. 30 T 16 N R 23 E COUNTY CHEROKEE



Course No.	Distance	Bearing
1	568.04	N89°53'24"E
2	165.17	N00°00'45"E
3	1017.42	S76°00'07"E
4	1017.41	S76°00'07"E
5	739.67	S63°45'31"E
6	330.56	S00°00'12"W
7	331.78	S89°39'20"W
8	1320.26	N00°00'42"W
9	660.13	N00°00'42"W

Course No.	Distance	Bearing
10	663.29	S89°46'56"W
11	660.62	N00°00'15"W
12	826.02	N53°23'44"W
13	826.02	N53°23'44"W
14	1207.80	S89°51'29"W
15	766.64	S89°51'29"W
16	330.11	N00°00'45"E
17	1320.42	N00°00'45"E

CERTIFICATE OF SURVEY Field Book No. 4-320 Date AUG, 1977

HEREBY CERTIFY THAT THE ABOVE PLAT AND MONUMENTS CORRECTLY REPRESENTATION OF THE SURVEY MADE IN SECTION 30, T16N, R23E, CHEROKEE COUNTY, OKLAHOMA.

W. VAUGHAN
L.S. 480
REGISTERED P.S. NO. 480
OKLAHOMA

**BRAWLEY ENGINEERING CORP.
CONSULTING ENGINEERS**

Under the Supervision of

**U.S. ARMY ENGINEER DISTRICT, TULSA
CORPS OF ENGINEERS**

LEGEND
 ▲ MONUMENT
 □ ORIGINAL CORNER
 ● IRON PIN

TENKILLER LAKE
ILLINOIS RIVER, OKLAHOMA

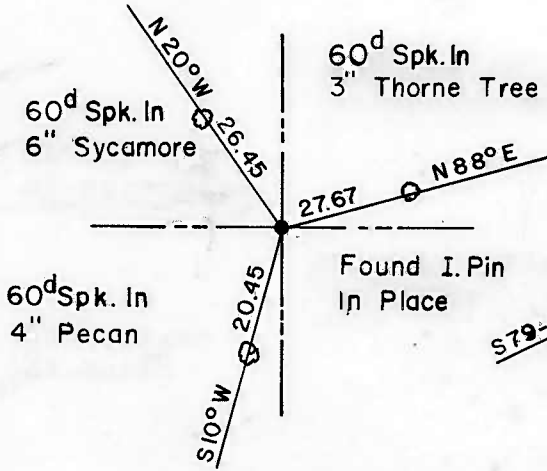
SECTION AND QUARTER SECTION CORNER
REFERENCES FOR

SEC. 30 , T 16 N, R 23 E, COUNTY - CHEROKEE

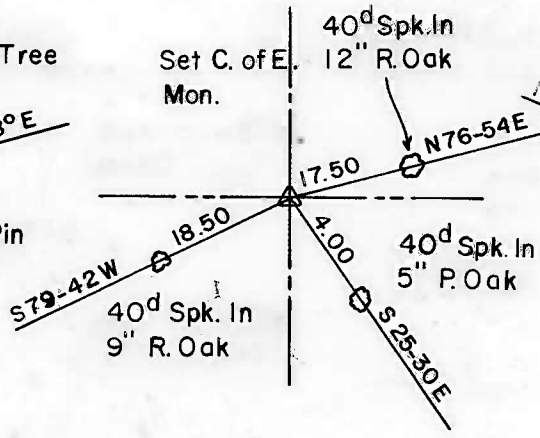
PERFORMED UNDER CONTRACT NUMBER DACW 56-77-C-0126



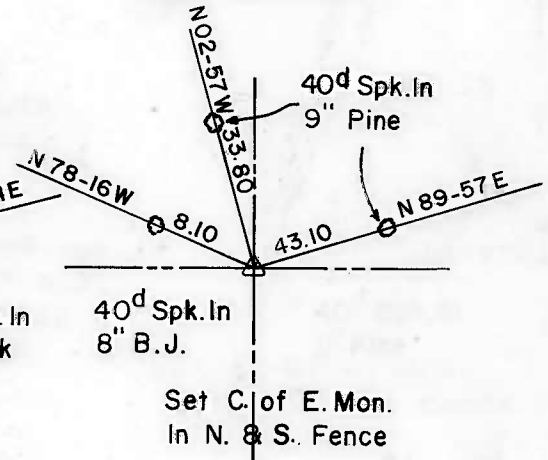
N.W. CORNER



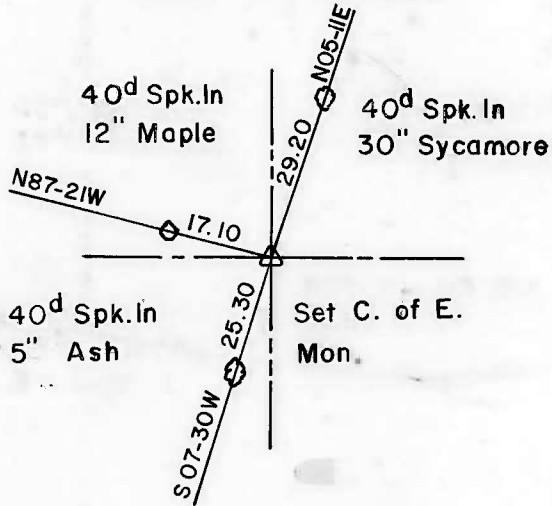
NORTH 1/4 CORNER



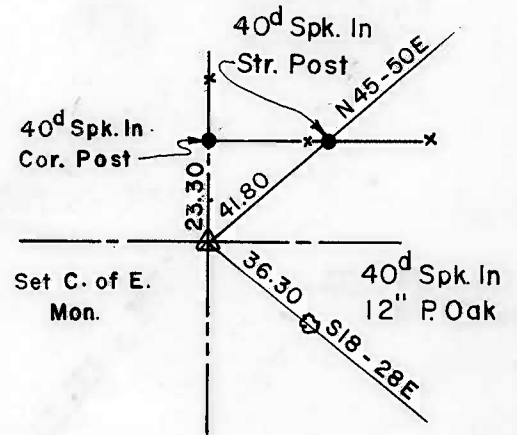
N.E. CORNER



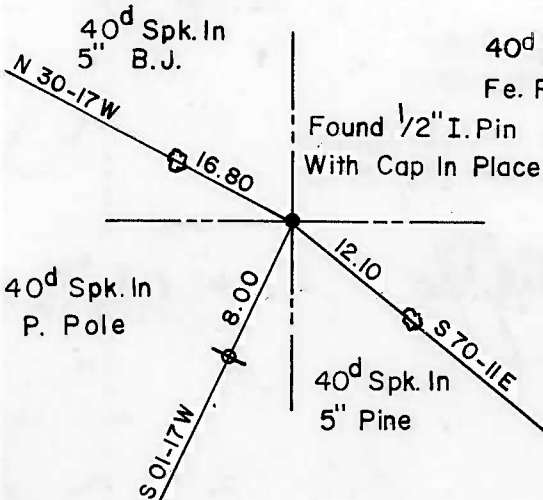
WEST 1/4 CORNER



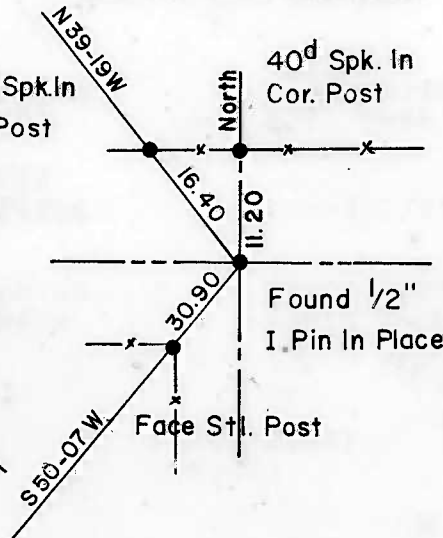
EAST 1/4 CORNER



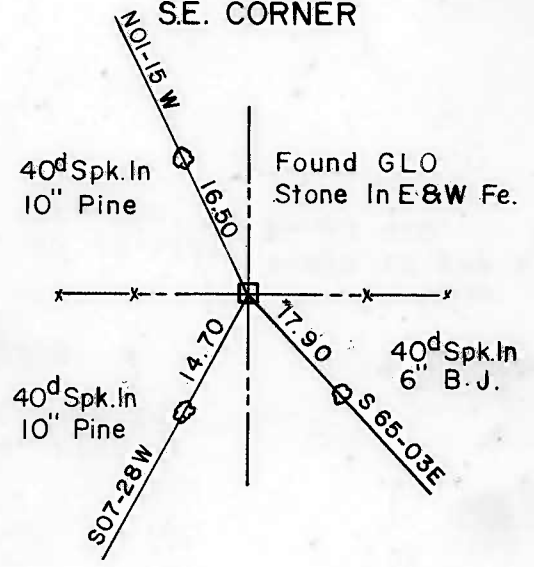
S.W. CORNER



SOUTH 1/4 CORNER



S.E. CORNER



CERTIFICATE OF SURVEY
HEREBY CERTIFY THAT THE ABOVE IS A TRUE AND CORRECT REPRESENTATION OF THE SURVEY MADE IN SECTION 30, T 16 N, R 23 E, CHEROKEE COUNTY, OKLAHOMA, L.S. 380

REGISTERED L.S. NO. 380

Field Book No. 4-320

Date: Aug., 1977

BRAWLEY ENGINEERING CORP
CONSULTING ENGINEERS

Under the Supervision of

U.S. ARMY ENGINEER DISTRICT, TULSA
CORPS OF ENGINEERS

LEGEND
□ ORIGINAL CORNER
△ MONUMENT
● IRON PIN