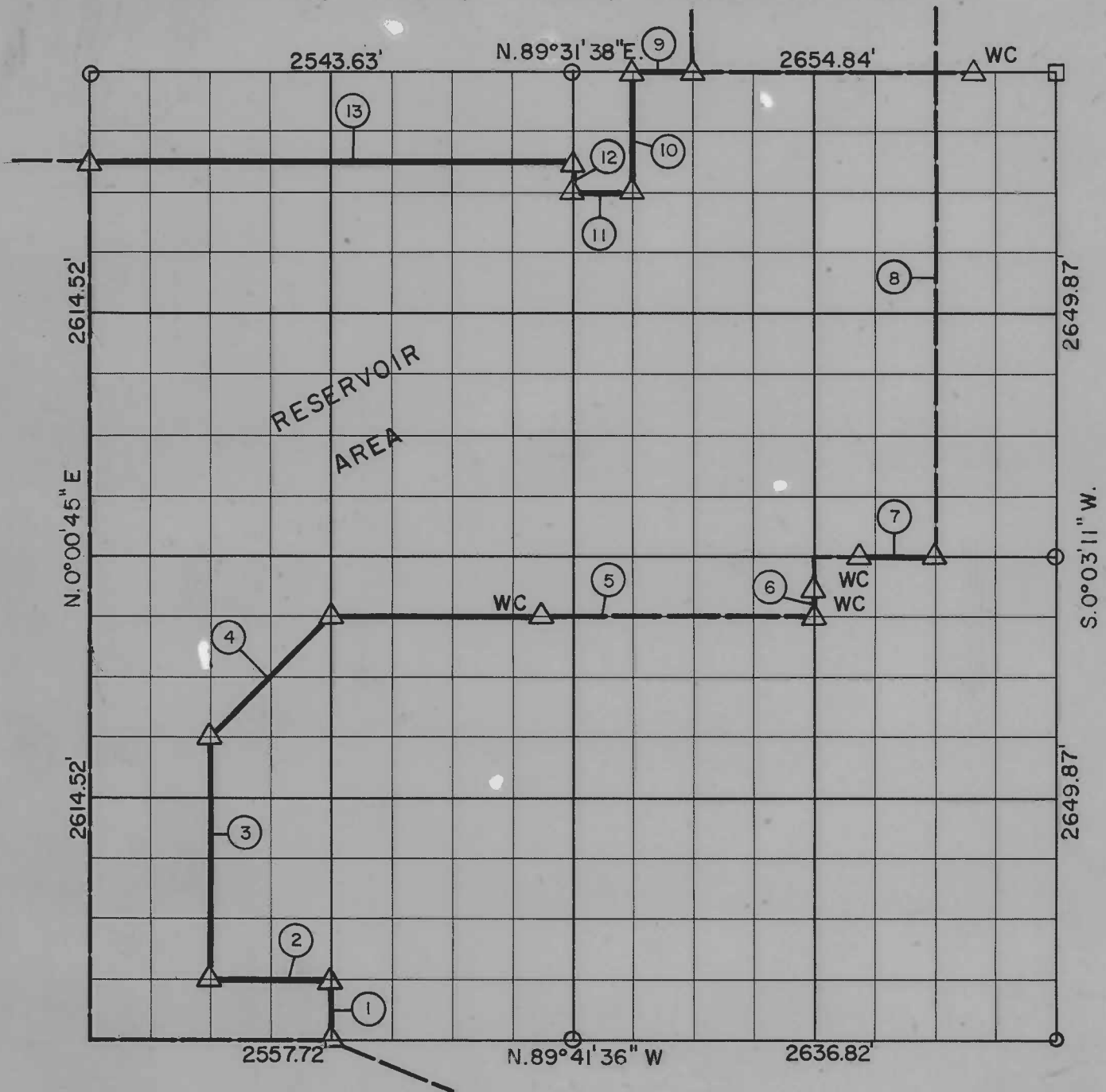


SEC. 31, T16N, R23E, CHEROKEE COUNTY



| Course No. | Distance | Bearing | Course No. | Distance | Bearing |
|------------|----------|-----------------|------------|----------|---------|
| 1 | 327.86' | N 0° 10' 17" W | | | |
| 2 | 660.00' | N 89° 44' 31" W | | | |
| 3 | 1309.19' | N 0° 10' 17" W | | | |
| 4 | 928.45' | N 45° 07' 56" E | | | |
| 5 | 2641.87' | N 89° 57' 55" E | | | |
| 6 | 330.16' | N 0° 02' 40" W | | | |
| 7 | 661.44' | N 89° 55' 00" E | | | |
| 8 | 2645.37' | N 0° 00' 15" E | | | |
| 9 | 331.85' | S 89° 31' 38" W | | | |
| 10 | 658.56' | S 0° 07' 03" E | | | |
| 11 | 331.56' | S 89° 37' 28" W | | | |
| 12 | 164.49' | N 0° 08' 31" W | | | |
| 13 | 2544.94' | S 89° 36' 03" W | | | |

Book No. 4 - 258

Date: July, 1965

I, James E. Curry, a Registered Professional Engineer, do hereby certify that the above plat is a true and accurate survey of Sec. 31, T16N, R23E as made under my supervision.

LEGEND

- 5/8" Rods w/Caps
- △ C. of E. Mon.
- Measured Line
- - - - - Calculated Line
- Orig. Cor. Stone

James E. Curry
JAMES E. CURRY
 Reg. Prof. Eng'r. No. 1872