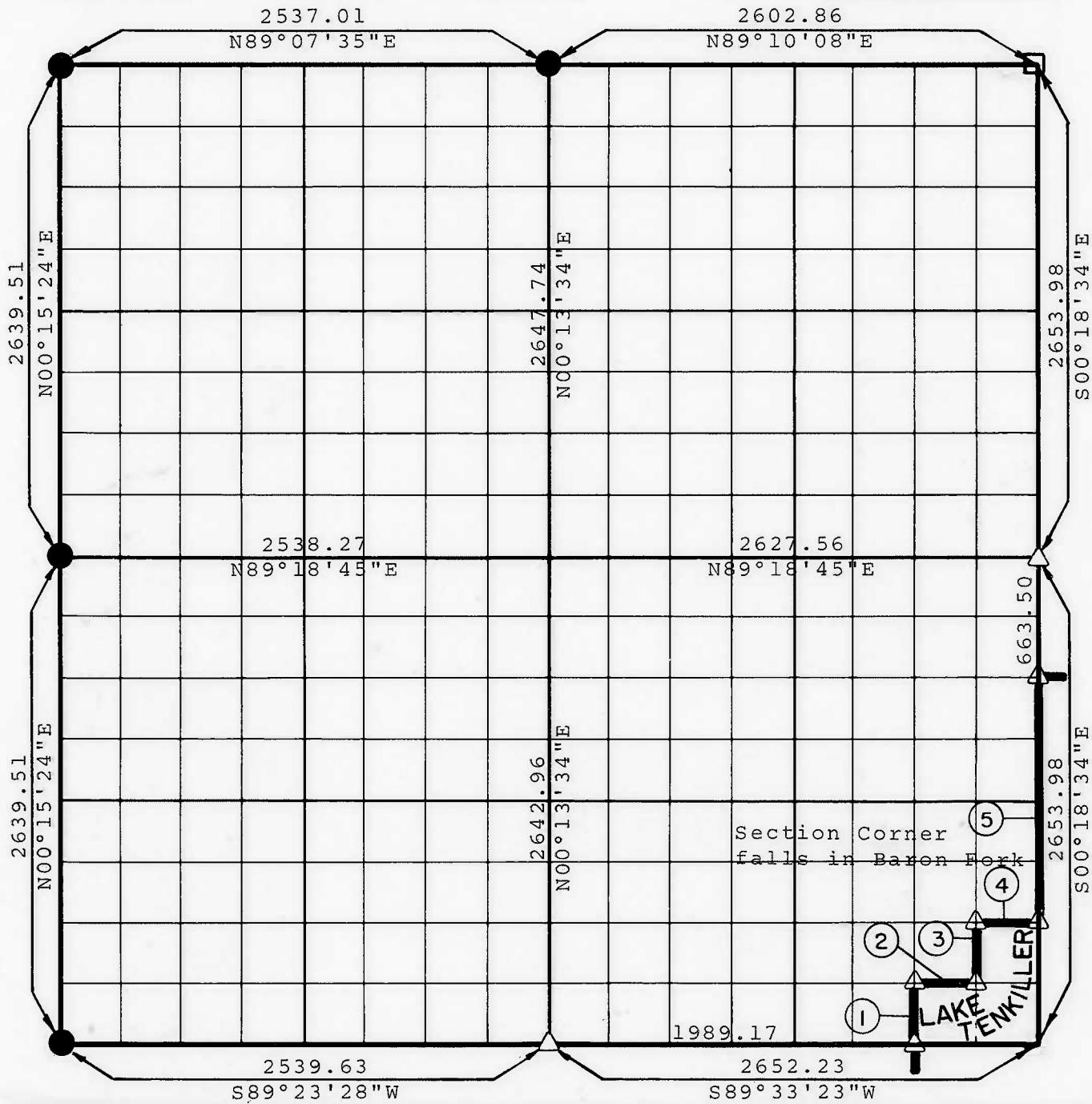


**PARTIAL BOUNDARY SURVEYS
TENKILLER LAKE
ILLINOIS RIVER, OKLAHOMA**

Performed Under Contract Number DACW 56-77-C-O-0126

SEC. 7 T 16 N R 23 E COUNTY CHEROKEE



Course No.	Distance	Bearing	Course No.	Distance	Bearing
1	331.40	N00°10'35"W			
2	331.15	N89°30'34"E			
3	331.46	N00°14'34"W			
4	330.76	N89°29'44"E			
5	1326.99	N00°18'34"W			

CERTIFICATE OF SURVEY Field Book No. 4-315 Date AUG. 1977

I HEREBY CERTIFY THAT THE ABOVE PLAT IS A TRUE AND CORRECT REPRESENTATION OF THE SURVEY MADE IN SECTION 7, T 16 N, R 23 E, CHEROKEE COUNTY, OKLAHOMA

W. Vaughan
W. VAUGHAN
L. S. 1700
REGISTERED L. S. NO. 380
OKLAHOMA

**BRAWLEY ENGINEERING CORP.
CONSULTING ENGINEERS**

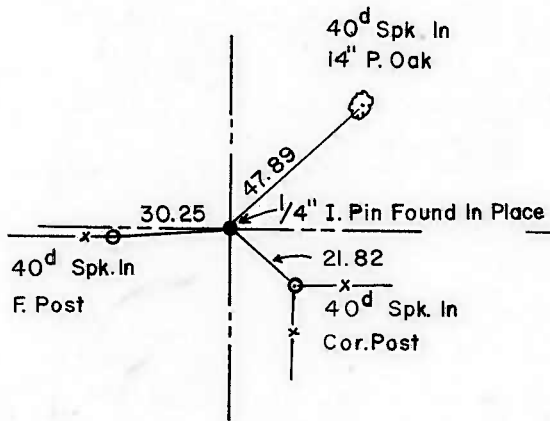
Under the Supervision of
**U.S. ARMY ENGINEER DISTRICT, TULSA
CORPS OF ENGINEERS**

LEGEND
 ▲ MONUMENT
 □ ORIGINAL CORNER
 ● IRON PIN

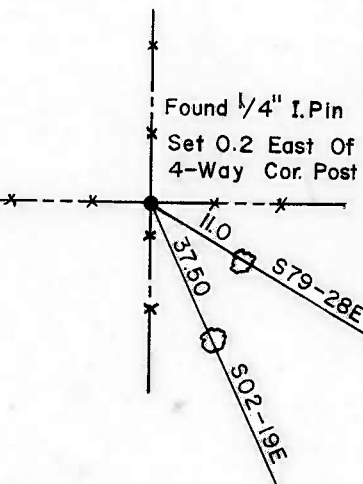
TENKILLER LAKE
ILLINOIS RIVER, OKLAHOMA
SECTION AND QUARTER SECTION CORNER
REFERENCES FOR
SEC. 7, T 16 N, R 23 E, COUNTY - CHEROKEE
PERFORMED UNDER CONTRACT NUMBER DACW 56-77-C-0126



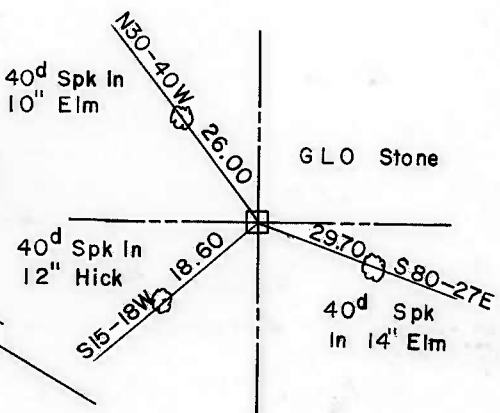
N.W. CORNER



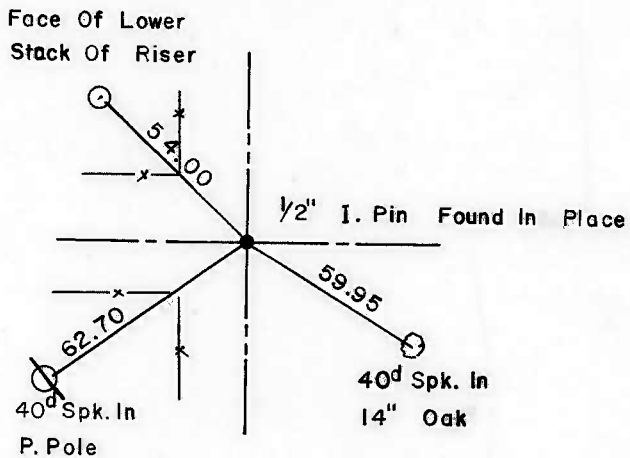
NORTH 1/4 CORNER



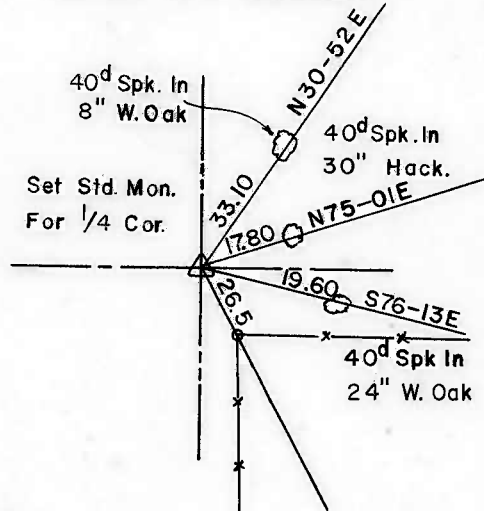
N.E. CORNER



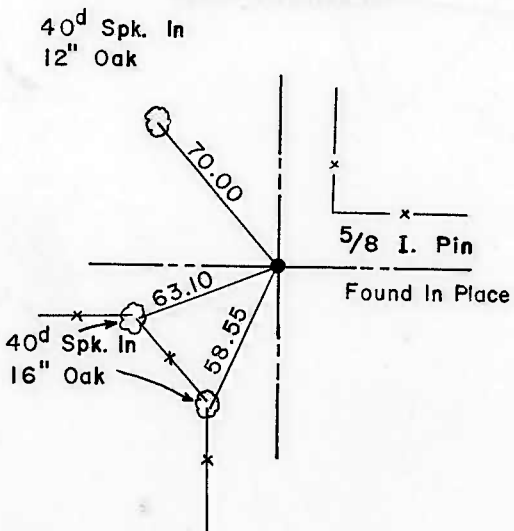
WEST 1/4 CORNER



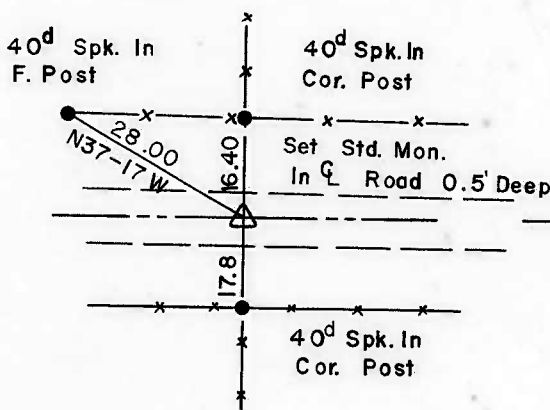
EAST 1/4 CORNER



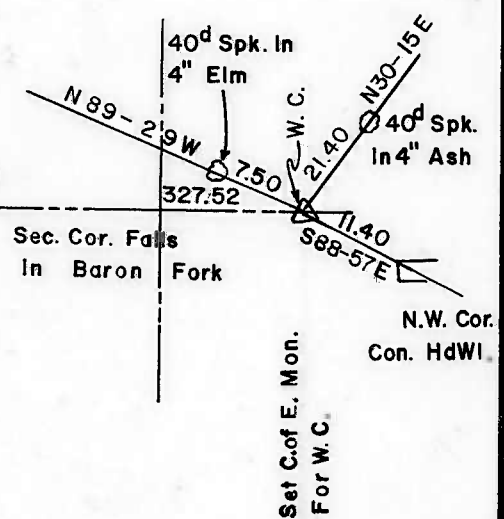
S.W. CORNER



SOUTH 1/4 CORNER



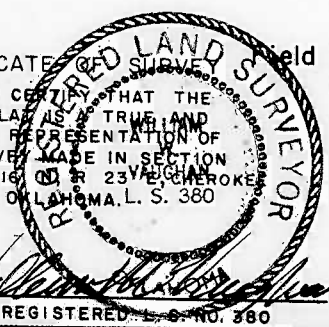
S.E. CORNER



CERTIFICATE OF SURVEY Field Book No. 4-315

Date: Aug., 1977

I HEREBY CERTIFY THAT THE ABOVE PLANS ARE TRUE AND CORRECT REPRESENTATION OF THE SURVEY MADE IN SECTION 7, T 16 N, R 23 E, CHEROKEE COUNTY, OKLAHOMA, L. S. 360



BRAWLEY ENGINEERING CORP
CONSULTING ENGINEERS

Under the Supervision of

U.S. ARMY ENGINEER DISTRICT, TULSA
CORPS OF ENGINEERS

LEGEND

- ORIGINAL CORNER
- △ MONUMENT
- IRON PIN

REGISTERED L.S. NO. 380