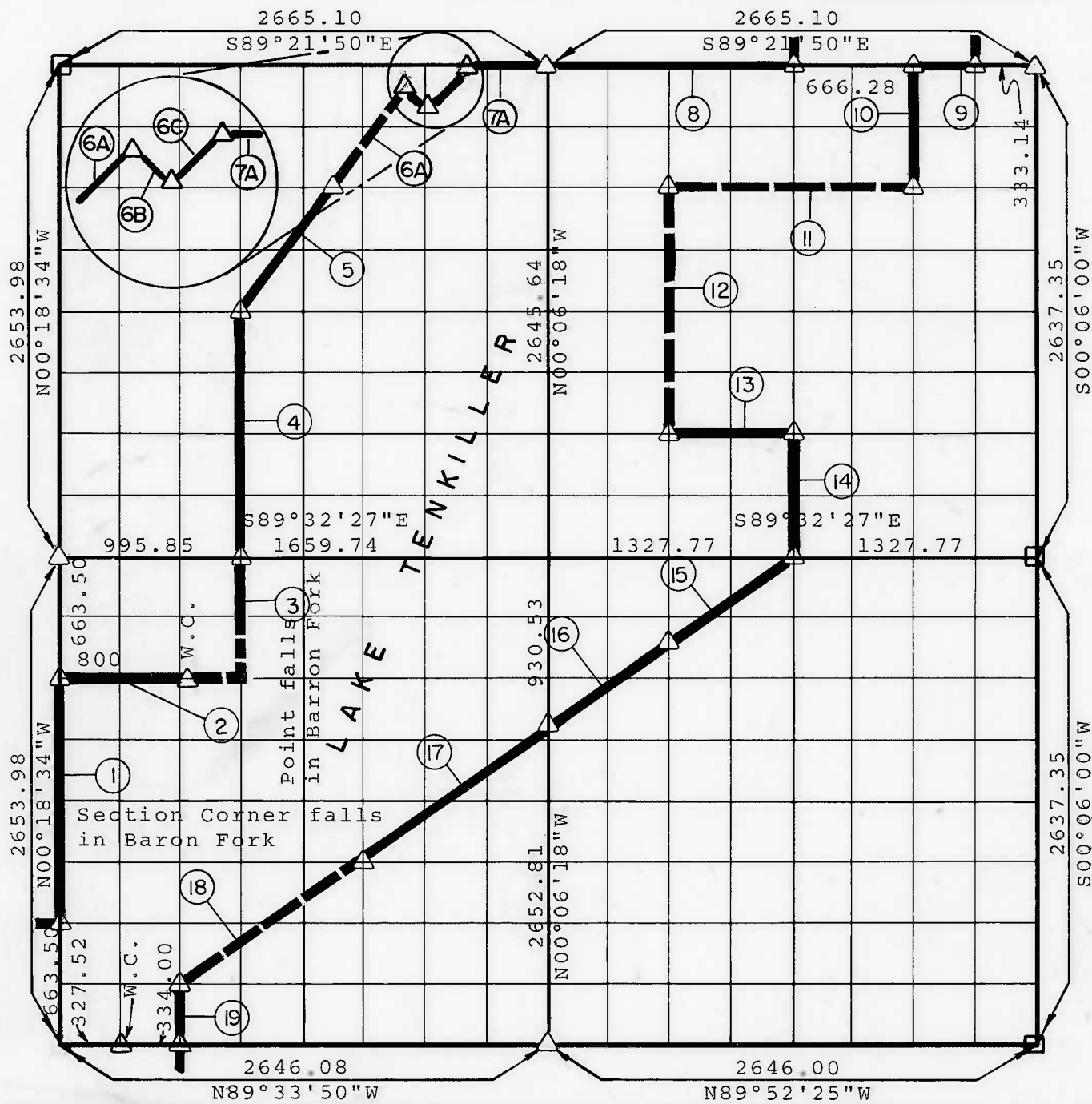


**PARTIAL BOUNDARY SURVEYS
TENKILLER LAKE
ILLINOIS RIVER, OKLAHOMA**

Performed Under Contract Number DACW 56-77-C-0-0126

SEC. 8 T. 16 N R. 23 E COUNTY CHEROKEE



Course No.	Distance	Bearing	Course No.	Distance	Bearing
1	1326.99	N00°18'34"W	10	659.85	S00°02'56"W
2	994.96	S89°32'37"E	11	1331.35	N89°24'29"W
3	663.39	N00°14'00"W	12	1321.78	S00°03'14"E
4	1325.42	N00°14'00"W	13	664.48	S89°29'46"E
5	823.93	N37°05'56"E	14	660.37	S00°00'09"E
6	823.93	N37°05'56"E	15	806.03	S55°15'02"W
7	666.28	S89°21'50"E	16	807.83	S55°15'02"W
8	1332.55	S89°21'50"E	17	1206.56	S55°15'02"W
9	333.14	S89°21'50"E	18	1206.55	S55°15'02"W
			19	331.71	S00°15'31"E
BOUNDARY REVISIONS BY ENTZ ENGINEERING & ASSOCIATES, NOVEMBER 1982.			6A	758.93	N37°05'56"E
			6B	115.00	S46°00'00"E
			6C	177.85	N43°04'50"E
			7A	501.28	S89°21'50"E

CERTIFICATE OF SURVEY Field Book No. 4-316 Date AUG. 1977

I HEREBY CERTIFY THAT THE ABOVE PLAT IS A TRUE AND CORRECT REPRESENTATION OF THE SURVEY MADE IN SECTION 8, T. 16 N. R. 23 E. CHEROKEE COUNTY, OKLAHOMA WILLIAM VAUGHAN L. S. 1986 REGISTERED L. S. NO. 390 OKLAHOMA

**BRAWLEY ENGINEERING CORP.
CONSULTING ENGINEERS**

Under the Supervision of

**U.S. ARMY ENGINEER DISTRICT, TULSA
CORPS OF ENGINEERS**

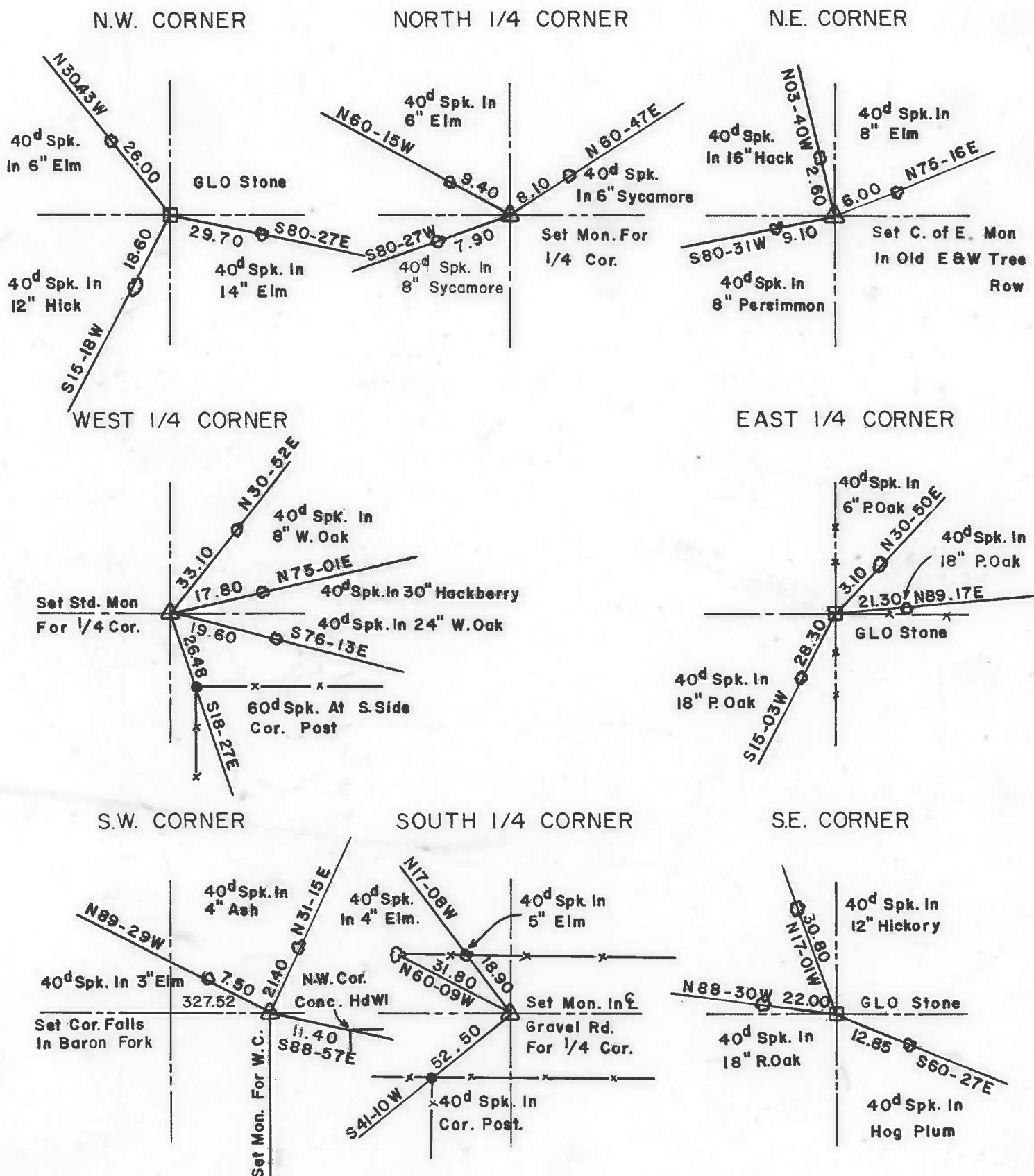
LEGEND
 Δ MONUMENT
 □ ORIGINAL CORNER
 ● IRON PIN

TENKILLER LAKE
ILLINOIS RIVER, OKLAHOMA

SECTION AND QUARTER SECTION CORNER
REFERENCES FOR

SEC. 8 , T 16 N, R 23 E, COUNTY - CHEROKEE

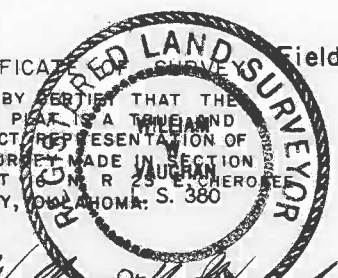
PERFORMED UNDER CONTRACT NUMBER DACW 56-77-C-0126



CERTIFICATE OF SURVEY Field Book No. 4-316

Date: Aug., 1977

I HEREBY CERTIFY THAT THE ABOVE PLAN IS A TRUE AND CORRECT REPRESENTATION OF THE SURVEY MADE IN SECTION 8, T 16 N, R 23 E, CHEROKEE COUNTY, OKLAHOMA: S. 380



BRAWLEY ENGINEERING CORP.
CONSULTING ENGINEERS

Under the Supervision of

U.S. ARMY ENGINEER DISTRICT, TULSA
CORPS OF ENGINEERS

LEGEND

- ORIGINAL CORNER
- △ MONUMENT
- IRON PIN

REGISTERED L.S. NO. 380