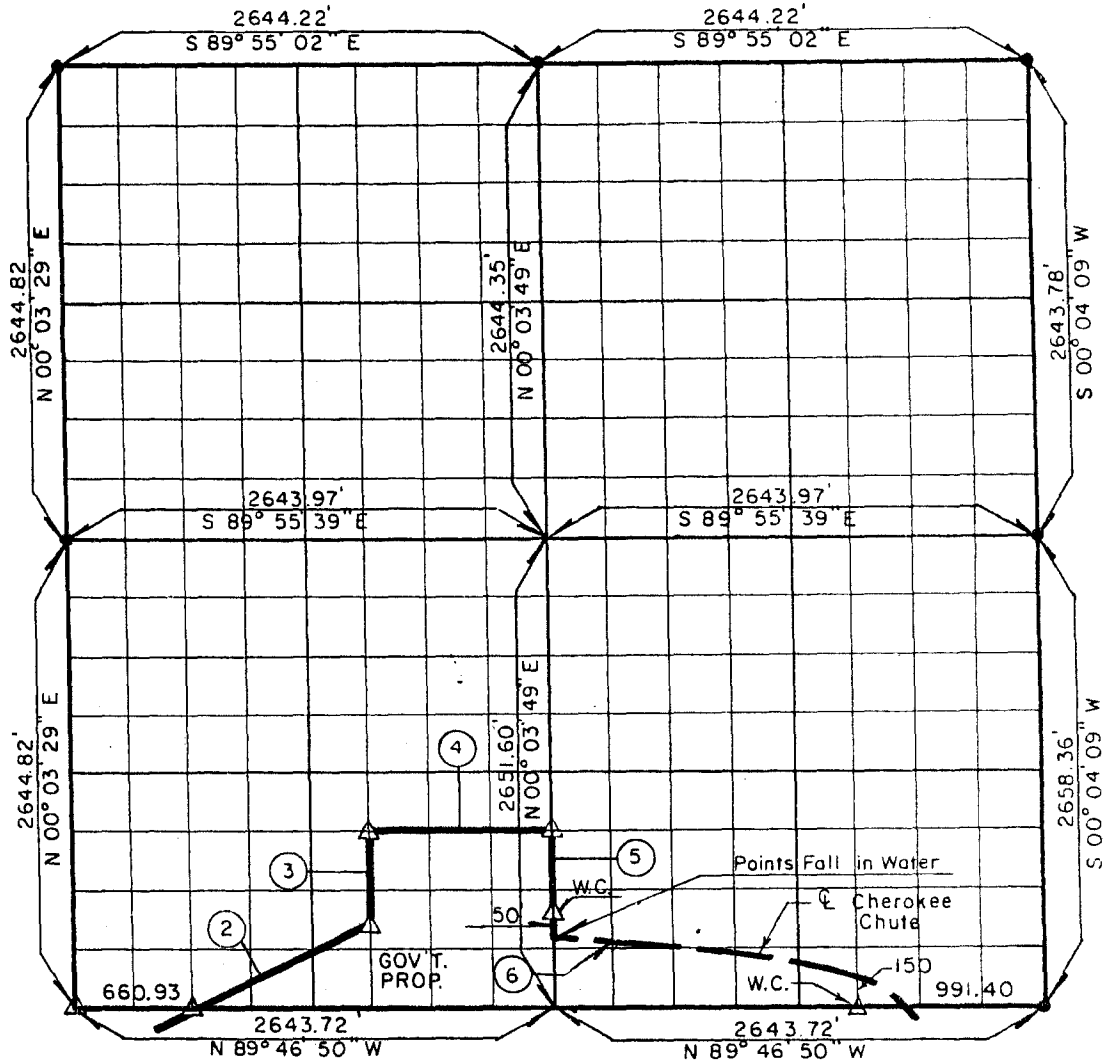


Cherokee Chute
Down Axis

PARTIAL BOUNDARY SURVEYS
W.D. MAYO LOCK AND DAM AND POOL #13
ARKANSAS RIVER, OKLAHOMA

Performed Under Contract Number DACW 56-76-C-0050

SEC. 16 T 10 N R 26 E COUNTY SEQUOYAH



Course No.	Distance	Bearing	Course No.	Distance	Bearing
2	1107.66'	N 63° 34' 28" E			
3	496.65'	N 00° 03' 40" E			
4	991.43'	S 89° 50' 09" E			
5	481.00'	S 00° 03' 49" W			
6	Cherokee Chute				

CERTIFICATE OF SURVEY Field Book No. A-3325 Date JAN., 1976

I HEREBY CERTIFY THAT THE ABOVE PLAT IS A TRUE AND CORRECT REPRESENTATION OF THE SURVEY MADE IN SECTION 16, T 10 N, R 26 E, SEQUOYAH COUNTY, OKLAHOMA.

BRAWLEY ENGINEERING CORP
CONSULTING ENGINEERS

Under the Supervision of

U.S. ARMY ENGINEER DISTRICT, TULSA
CORPS OF ENGINEERS

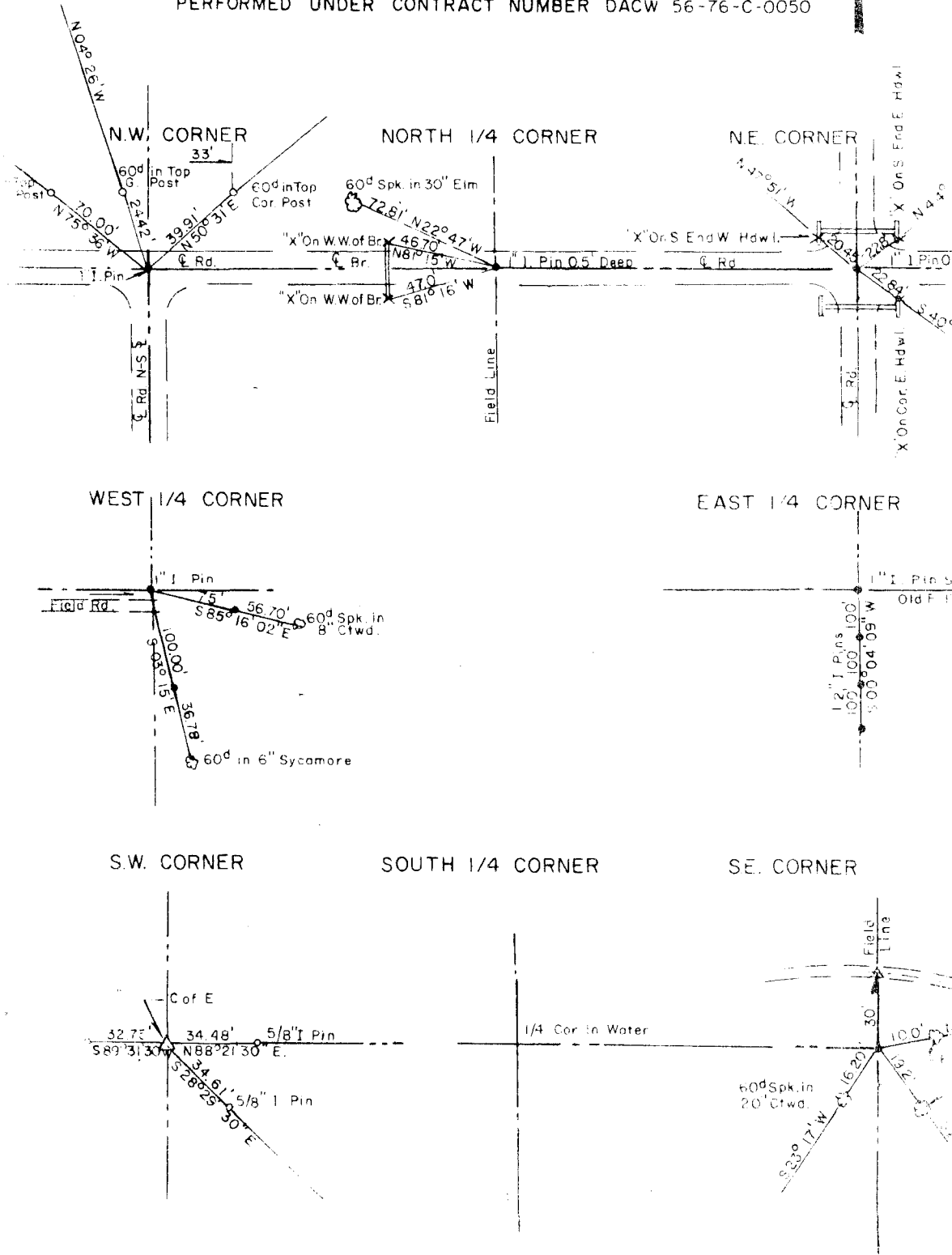
LEGEND
 △ MONUMENT
 □ ORIGINAL CORNER-BRAS
 ● IRON PIN SET

W.D. MAYO LOCK AND DAM AND POOL #13
 ARKANSAS RIVER, OKLAHOMA

SECTION AND QUARTER SECTION CORNER
 REFERENCES FOR

SEC. 16, T 10 N, R 26 E, COUNTY - SEQUOYAH

PERFORMED UNDER CONTRACT NUMBER DACW 56-76-C-0050



FIELD SURVEY
 THIS IS A TRUE AND
 ACCURATE REPRESENTATION OF
 THE SURVEY MADE IN SECTION
 16, T 10 N, R 26 E, SEQUOYAH
 COUNTY, OKLAHOMA

Field Book No. 43325

Date: Jan., 1976

BRAWLEY ENGINEERING CORP
CONSULTING ENGINEERS

Under the Supervision of

LEGEND
 (Symbol) ORIGINAL CORNER
 (Symbol) RECONSTRUCTED CORNER