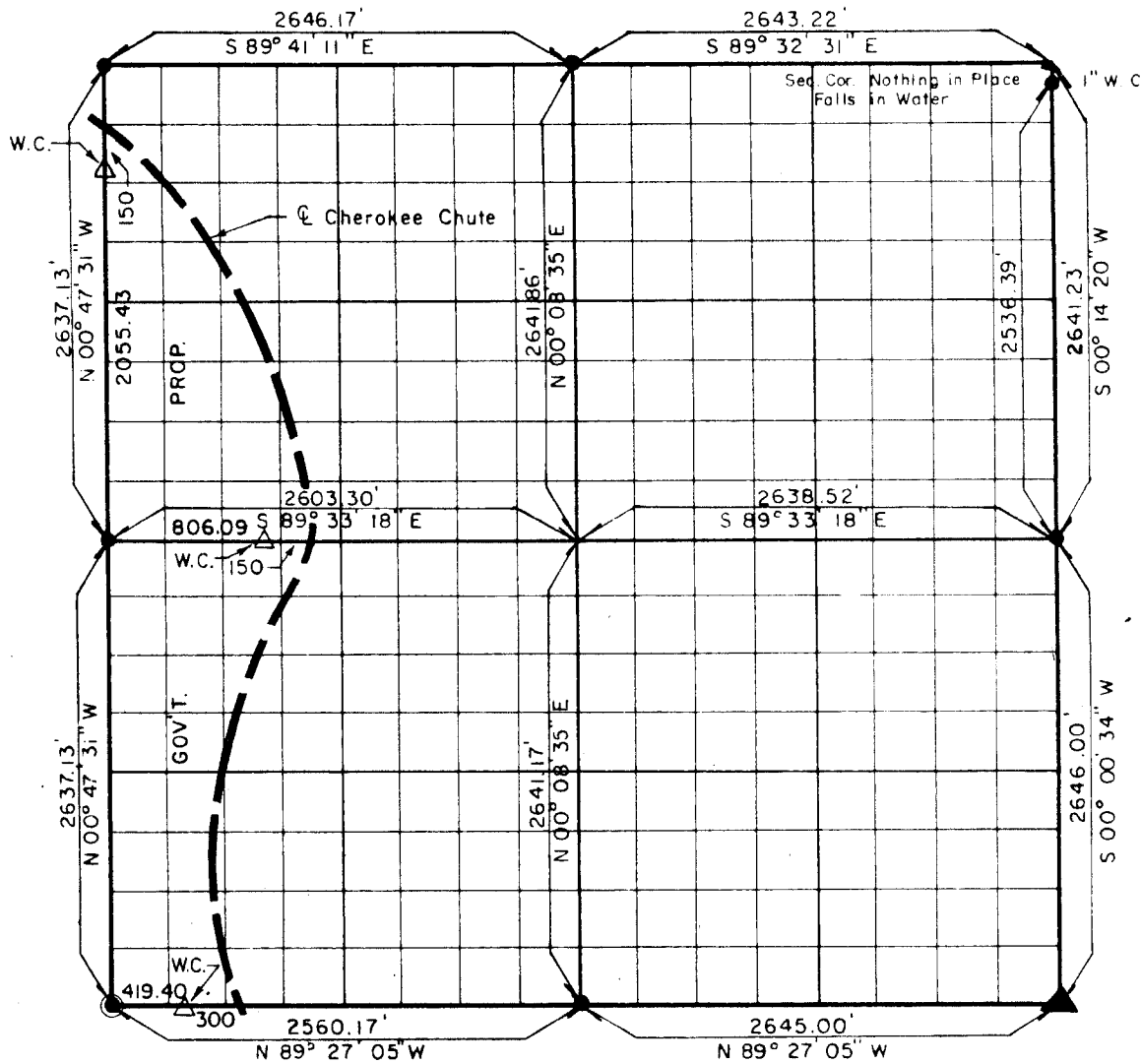


PARTIAL BOUNDARY SURVEYS
 W.D. MAYO LOCK AND DAM AND POOL #13
 ARKANSAS RIVER, OKLAHOMA

Performed Under Contract Number DACW 56-76-C-0050

SEC. 22 T. 10 N R. 26 E COUNTY SEQUOYAH



Course No.	Distance	Bearing	Course No.	Distance	Bearing

CERTIFICATE OF SURVEY Field Book No. A-3327 Date JAN., 1976

I HEREBY CERTIFY THAT THE ABOVE PLAT IS A TRUE AND CORRECT REPRESENTATION OF THE SURVEY MADE IN SECTION 22, T. 10 N., R. 26 E., SEQUOYAH COUNTY, OKLAHOMA

BRAWLEY ENGINEERING CORP
 CONSULTING ENGINEERS

Under the Supervision of

U.S. ARMY ENGINEER DISTRICT, TULSA
 CORPS OF ENGINEERS

LEGEND

- ▲ MONUMENT
- ORIGINAL CORNER-BRA
- IRON PIN SET
- ▲ B. I. A. Brass Cap
- IRON PIN IN PLACE

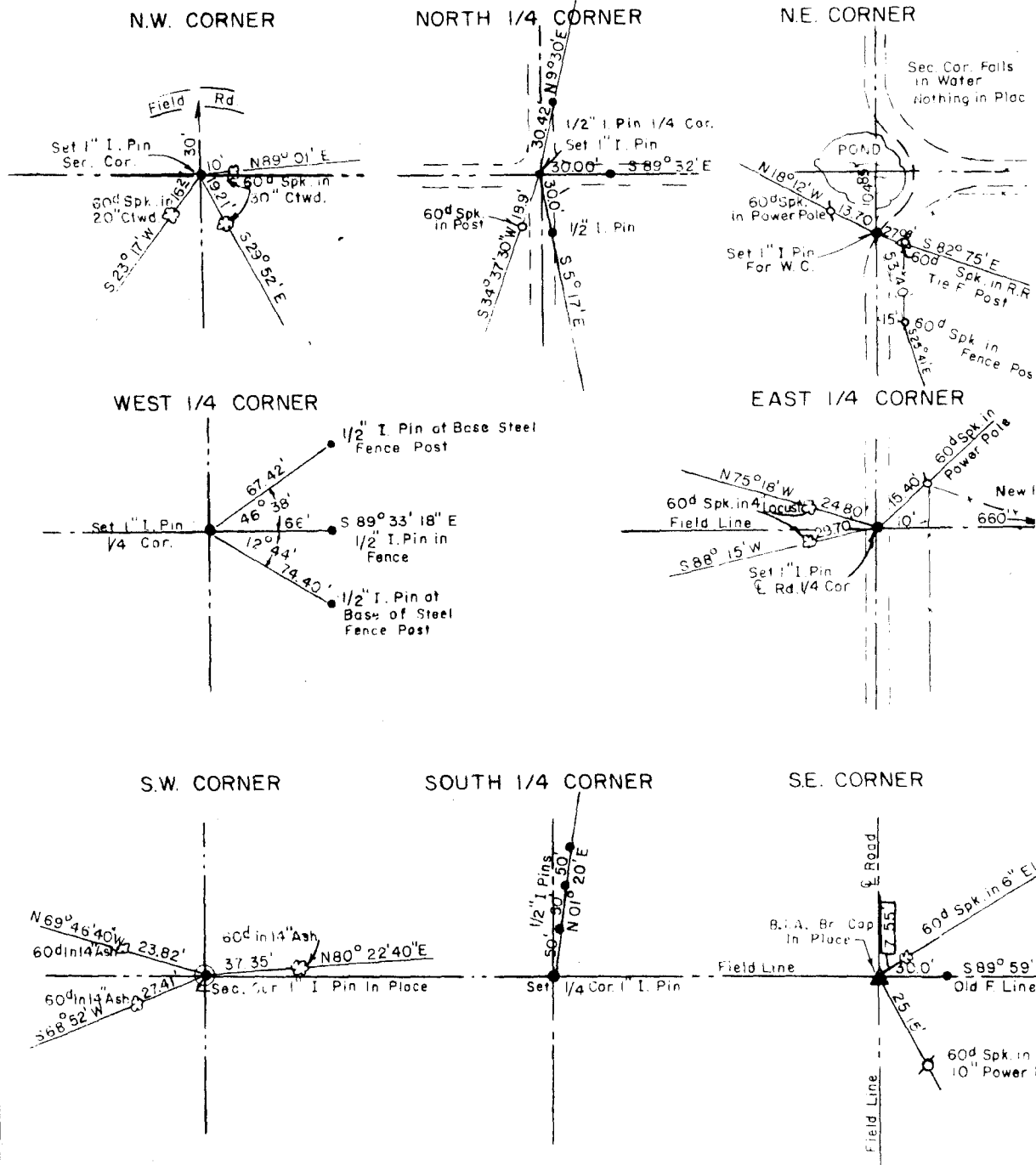
[Handwritten signature]

W.D. MAYO LOCK AND DAM AND POOL #13
 ARKANSAS RIVER, OKLAHOMA

SECTION AND QUARTER SECTION CORNER
 REFERENCES FOR

SEC. 22, T 10 N, R 26 E, COUNTY - SEQUOYAH

PERFORMED UNDER CONTRACT NUMBER DACW 56-76-C-0050



CERTIFICATE OF SURVEY
 I HEREBY CERTIFY THAT THE ABOVE PLAT IS A TRUE AND CORRECT REPRESENTATION OF THE SURVEY MADE IN SECTION 22, T 10 N, R 26 E, SEQUOYAH COUNTY, OKLAHOMA.

Field Book No. A-3327

Date: Jan., 1976

BRAWLEY ENGINEERING CORP
 CONSULTING ENGINEERS

Under the Supervision of

U.S. ARMY ENGINEER DISTRICT TULSA

- LEGEND
- ORIGINAL CORNER
 - IRON PIN IN PLACE
 - IRON PIN SET