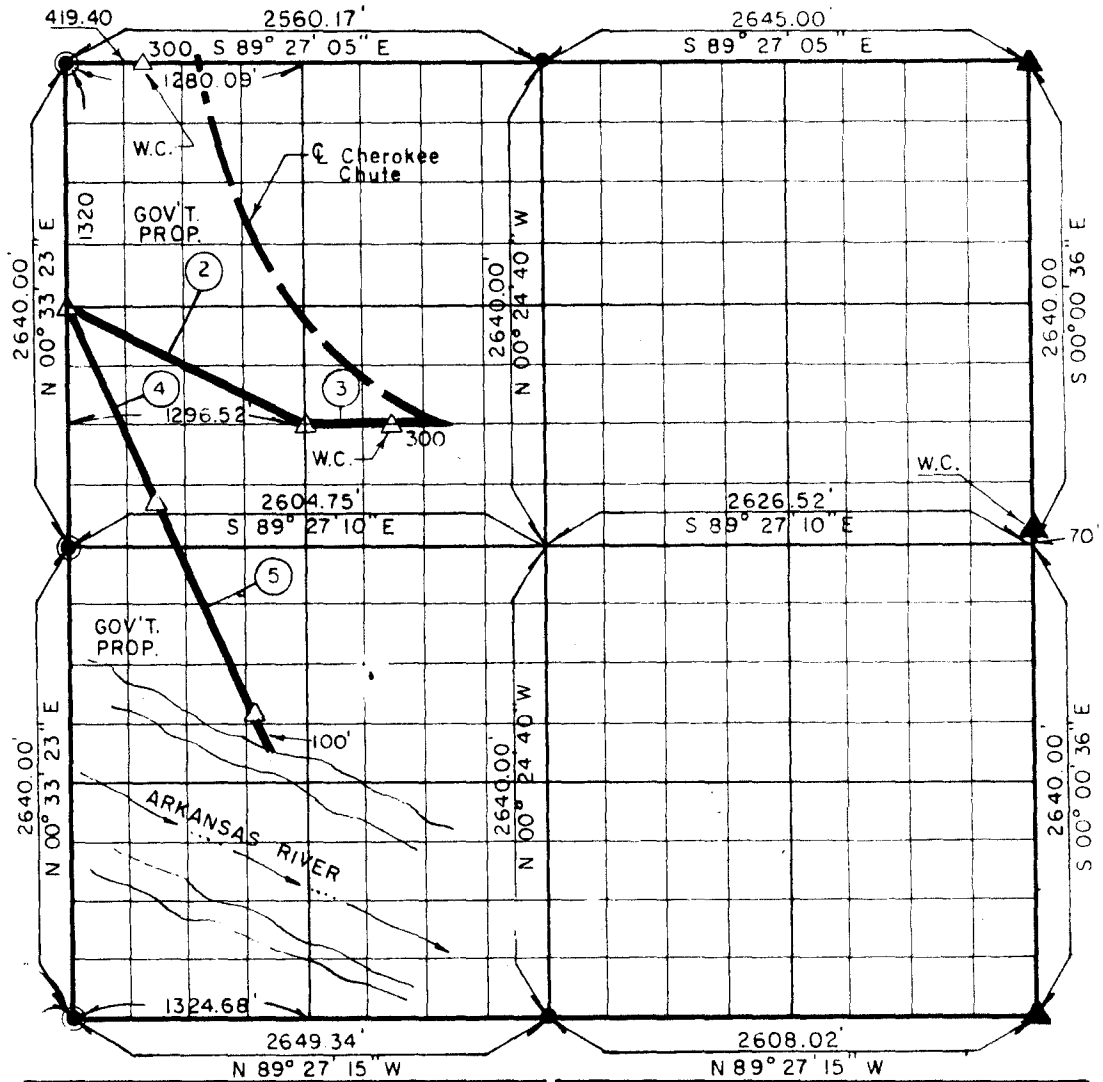


PARTIAL BOUNDARY SURVEYS
W.D. MAYO LOCK AND DAM AND POOL #13
ARKANSAS RIVER, OKLAHOMA

Performed Under Contract Number DACW 56-76-C-0050

SEC. 27 T. 10. N R. 26. E COUNTY SEQUOYAH



Course No.	Distance	Bearing	Course No.	Distance	Bearing
2	1454.70'	S 62° 28' 32" E			
3	445.70'	S 89° 27' 10" E			
4	1200.00'	S 25° 17' 00" E			
5	1266.41'	S 25° 17' 00" E			

CERTIFICATE OF SURVEY Field Book No. A-3428 Date JAN., 1976

I HEREBY CERTIFY THAT THE ABOVE PLAT IS A TRUE AND CORRECT REPRESENTATION OF THE SURVEY MADE IN SECTION 27, T. 10. N., R. 26. E., SEQUOYAH COUNTY, OKLAHOMA.

BRAWLEY ENGINEERING CORP
CONSULTING ENGINEERS
 Under the Supervision of

U.S. ARMY ENGINEER DISTRICT, TULSA
CORPS OF ENGINEERS

- LEGEND**
- △ MONUMENT
 - ORIGINAL CORNER-BR
 - IRON PIN SET
 - ▲ B.I.A. Brass Cap
 - ⊙ IRON PIN IN PLACE

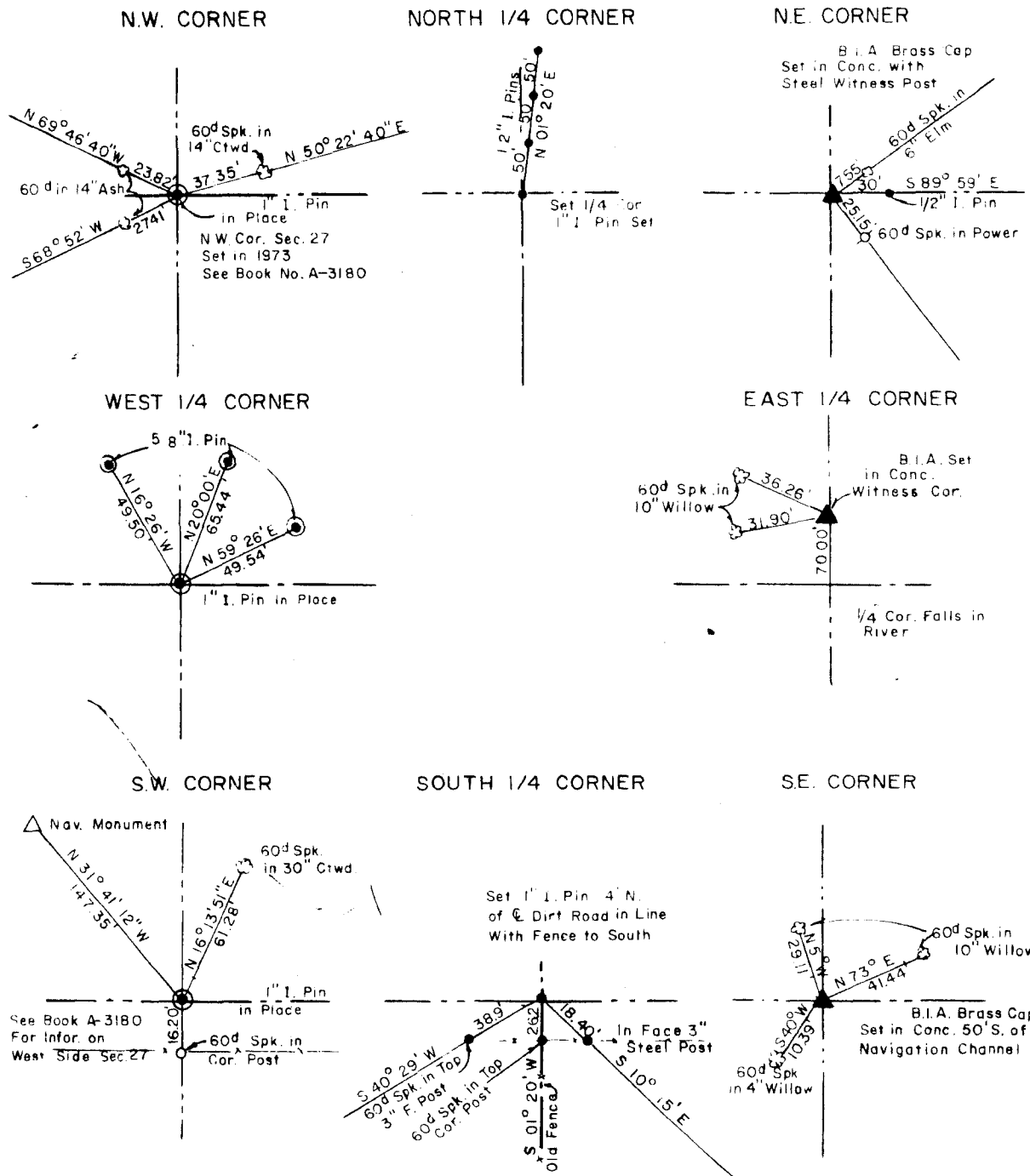
(Handwritten signature)

W.D. MAYO LOCK AND DAM AND POOL #13
 ARKANSAS RIVER, OKLAHOMA

SECTION AND QUARTER SECTION CORNER
 REFERENCES FOR

SEC. 27, T 10 N, R 26 E, COUNTY - SEQUOYAH

PERFORMED UNDER CONTRACT NUMBER DACW 56-76-C-0050



CERTIFICATE OF SURVEY Field Book No. A-3328 Date: Jan., 1976

I HEREBY CERTIFY THAT THE ABOVE PLAT IS A TRUE AND CORRECT REPRESENTATION OF THE SURVEY MADE IN SECTION 27, T 10 N, R 26 E, SEQUOYAH COUNTY, OKLAHOMA.

BRAWLEY ENGINEERING CORP
 CONSULTING ENGINEERS
 Under the Supervision of

LEGEND
 □ ORIGINAL CORNER
 ● IRON PIN IN PLACE