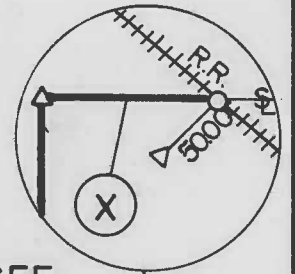
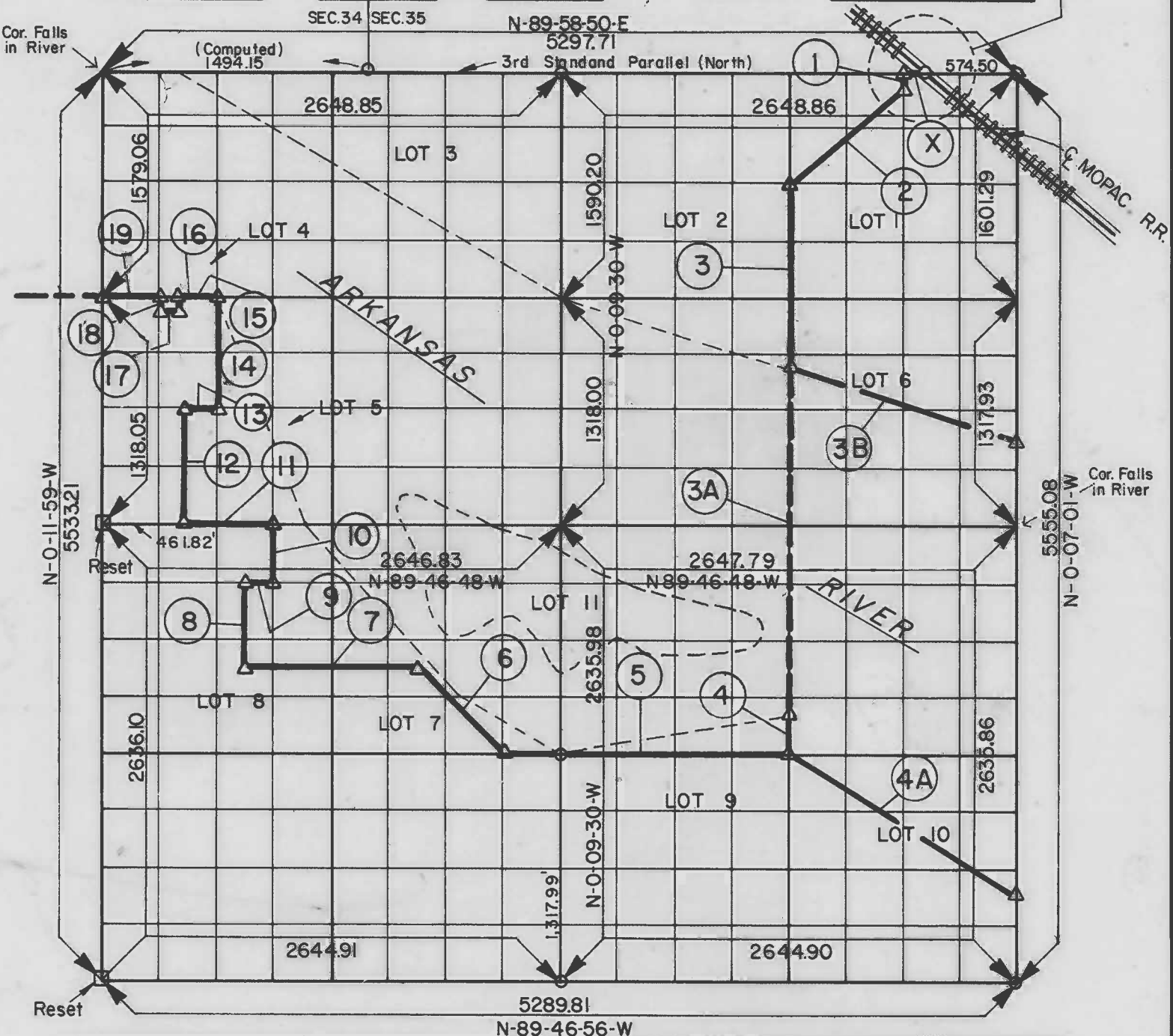


# RECORD BOUNDARY PLAT



FRACTIONAL SEC 2, T 12 N, R 20 E COUNTY MUSKOGEE



Course No.	Distance	Bearing	Course No.	Distance	Bearing
1	70.00	S-0-07-38-E	* 13	200.00	S-89-46-46-E
2	1089.33	S-37-16-57-W	* 14	659.02	N-00-11-59-W
3	1016.77	S-00-08-16-E	* 15	241.82	N-89-46-44-W
3A	2043.86	S-00-08-16-E	* 16	100.00	S-00-11-59-E
4	234.52	S-00-08-16-E	* 17	100.00	N-89-46-44-W
5	1653.96	N-89-46-52-W	* 18	100.00	N-00-11-59-W
6	706.29	N-44-42-47-W	* 19	320.00	N-89-46-44-W
7	993.00	N-89-46-52-W	* Revised by C of E, March, 1971		
8	448.53	N-00-11-12-W	Course "X" = Course 8 - Sec 35, 137.42, S-89-58-50-W		
9	165.46	N-89-46-59-W	+ 3B	1454.40	S-71-05-10-E
10	329.50	N-00-11-02-W	+ 4A	1604.87	S-58-54-29-E
11	530.74	N-89-46-48-W	+ Revised by C of E, March, 1986		
12	659.02	N-00-11-59-W			

Field Book No. A-2131, A-2560, A-2561, A-2562 Date January, 1967

LEGEND

- ▲ MONUMENT
- ORIGINAL CORNER
- IRON PIN