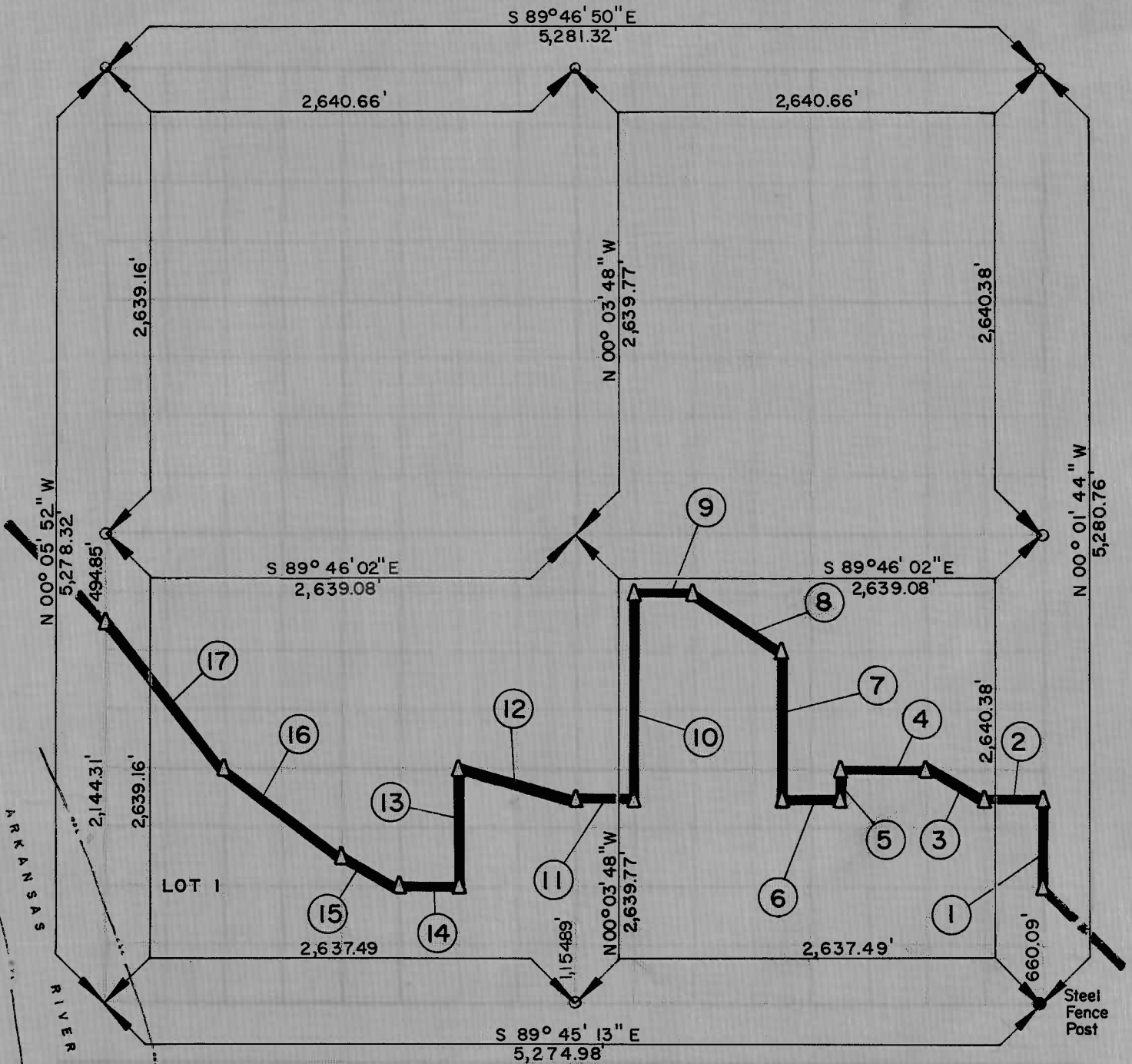


PARTIAL BOUNDARY SURVEYS
 LOCK AND DAM NO. 16, WEBBERS FALLS,
 ARKANSAS RIVER, OKLAHOMA

Performed Under Contract Number DACK 36-87-C-0035

SEC 12 T 13 N, R 19 E COUNTY: MUSKOGEE



Course No.	Distance	Bearing	Course No.	Distance	Bearing
1	495.07	N 00° 01' 44" W	14	329.73	N 89° 45' 24" W
2	329.78	N 89° 45' 37" W	15	369.53	N 63° 14' 32" W
3	369.45	N 63° 13' 52" W	16	826.81	N 52° 59' 40" W
4	494.68	N 89° 45' 37" W	17	1,059.07	N 38° 36' 59" W
5	165.01	S 00° 02' 30" E			
6	329.77	N 89° 45' 37" W			
7	825.02	N 00° 02' 53" W			
8	596.10	N 56° 09' 05" W			
9	329.85	N 89° 45' 56" W			
10	1,154.93	S 00° 03' 33" E			
11	329.77	N 89° 45' 37" W			
12	680.74	N 75° 44' 03" W			
13	659.91	S 00° 04' 19" E			

A-2548, A-2553 DATE OCTOBER, 1966

EPISCOP ENGINEERING CO. INC.

Under the Supervision of

U.S. ARMY ENGINEER DISTRICT, TULSA
 CORPS OF ENGINEERS

12 13 19 MUSKOGEE

John A. Whipple