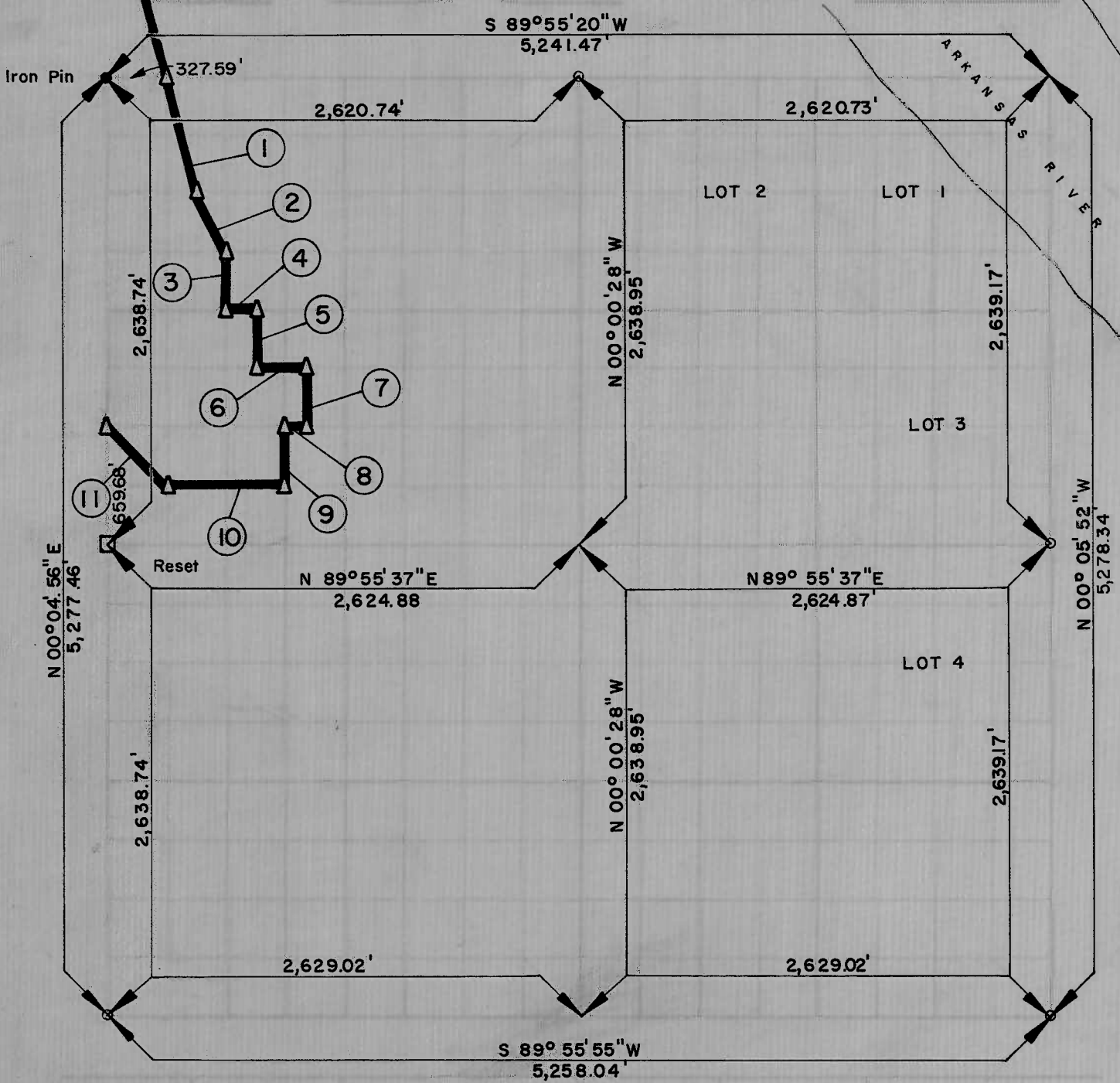


PARTIAL BOUNDARY SURVEYS
 LOCK AND DAM NO 16, WEBBERS FALLS,
 ARKANSAS RIVER, OKLAHOMA

Performed Under Contract Number DACW 56 - 67 - C - 0035

SEC 14 T 13 N, R 19 E COUNTY: MUSKOGEE



Course No.	Distance	Bearing	Course No.	Distance	Bearing
1	679.33	S 13°53'12"E			
2	367.96	S 26°23'05"E			
3	329.84	S 00°03'33"W			
4	163.92	N 89°55'36"E			
5	329.85	S 00°03'14"W			
6	227.87	N 89°55'27"E			
7	329.85	S 00°02'11"W			
8	63.98	S 89°55'36"W			
9	329.85	S 00°02'55"W			
10	656.09	S 89°55'33"W			
11	464.57	N 44°50'16"W			

A-2545, A-2548 Date OCTOBER, 1966
 A-2553

BRESON ENGINEERING CO. INC.

Under the Supervision of

U.S. ARMY ENGINEER DISTRICT, TULSA
 CORPS OF ENGINEERS

LEGEND

- 1. ALIQUOT
- 2. ORIGINAL COURSE
- 3. IRON PIN

14 13 19 MUSKOGEE

John W. Whipple