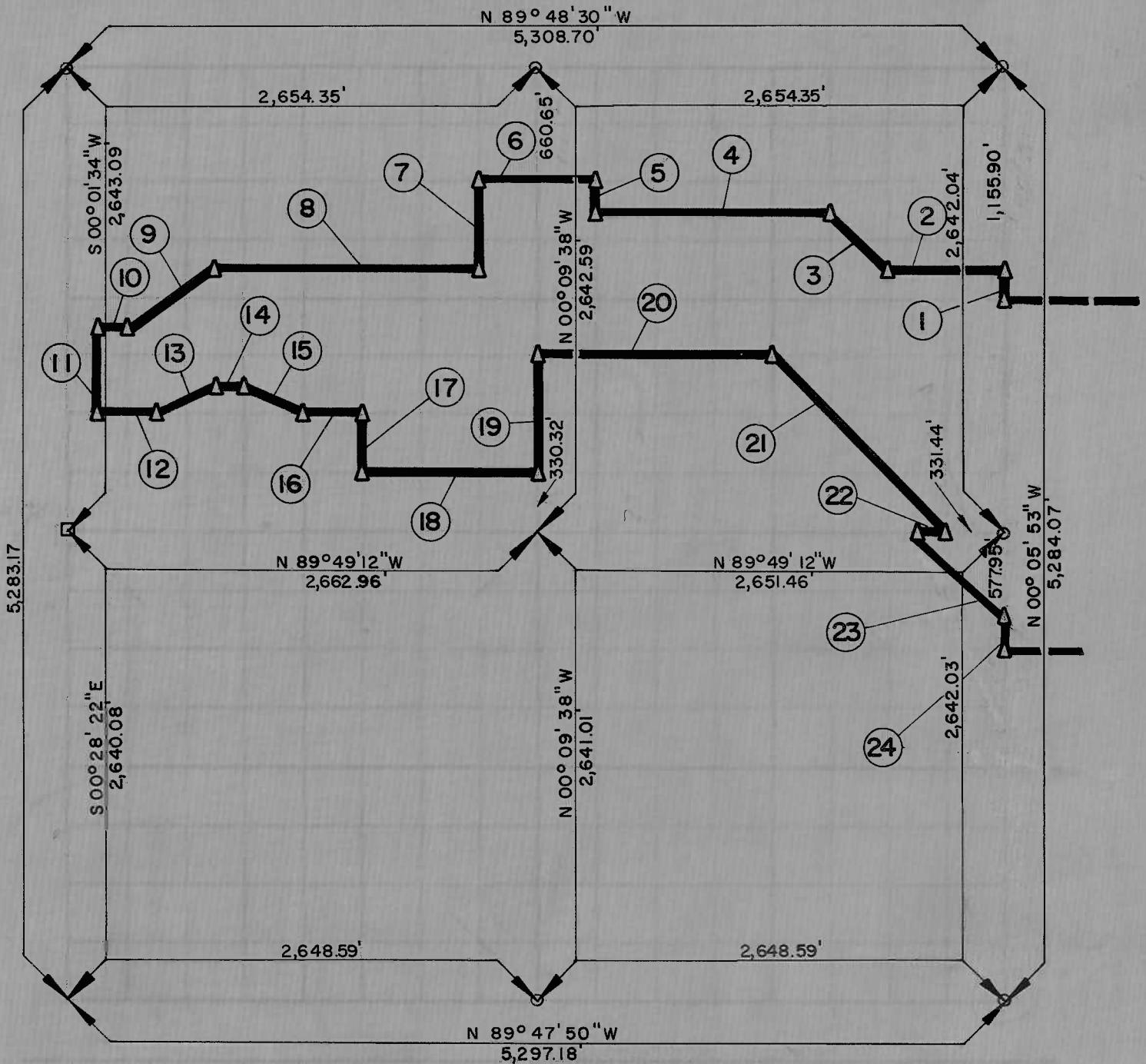


PARTIAL BOUNDARY SURVEYS
 LOCK AND DAM NO. 16, WEBBERS FALLS,
 ARKANSAS RIVER, OKLAHOMA

Performed Under Contract Number SACW 56-67-C-0039

SEC 17 T 13 N, R 19 E COUNTY: MUSKOGEE



1	165.12	N 00° 05' 53" W	14	166.27	S 89° 49' 02" E
2	663.27	N 89° 48' 48" W	15	371.94	S 63° 27' 07" E
3	469.30	N 45° 05' 03" W	16	332.60	S 89° 48' 56" E
4	1,326.73	N 89° 48' 42" W	17	330.35	S 00° 05' 25" E
5	165.16	N 00° 09' 10" W	18	998.21	S 89° 49' 09" E
6	663.76	N 89° 48' 43" W	19	660.64	N 00° 09' 38" W
7	495.49	S 00° 08' 14" E	20	1,326.27	S 89° 48' 56" E
8	1,495.19	N 89° 48' 50" W	21	1,407.51	S 45° 04' 23" E
9	597.07	S 56° 35' 29" W	22	165.72	N 89° 49' 13" W
10	166.20	N 89° 49' 02" W	23	764.18	S 40° 40' 55" E
11	495.57	S 00° 00' 51" W	24	82.50	S 00° 05' 53" E
12	332.60	S 89° 49' 03" E			
13	370.80	N 63° 43' 47" E			

A-2542, A-2544

SEPTEMBER, 1966

John B. Whipple