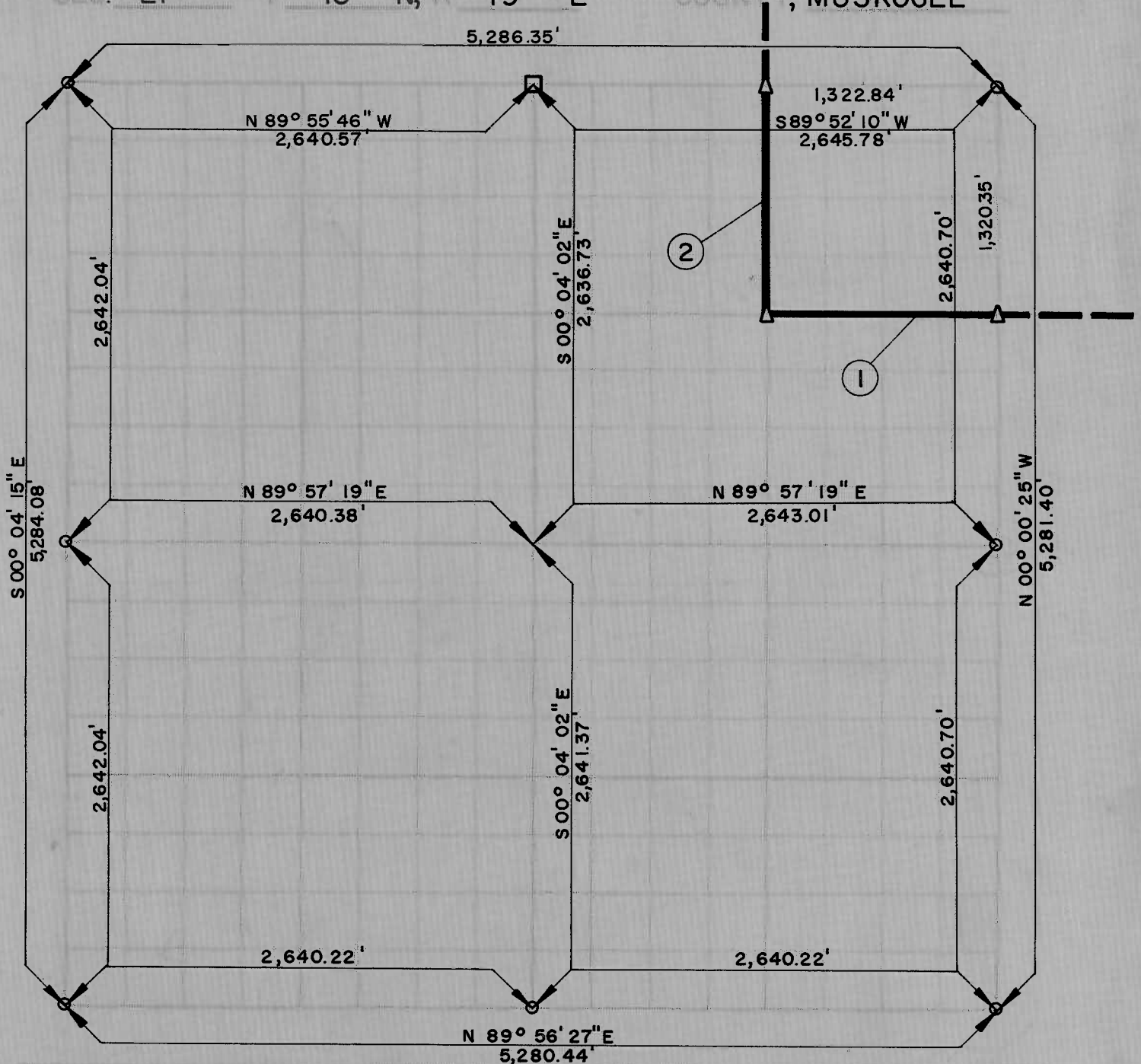


PARTIAL BOUNDARY SURVEYS
 LOCK AND DAM NO. 16, WEBBERS FALLS,
 ARKANSAS RIVER, OKLAHOMA

Performed Under Contract Number DACW 56 - 67 - C - 0035

SEC. 21 T 13 N, R 19 E COUNTY, MUSKOGEE



| Course No | Distance | Bearing | Course No | Distance | Bearing |
|-----------|-----------|-----------------|-----------|----------|---------|
| 1 | 1,319.36' | S 00° 02' 13" E | | | |
| 2 | 1,322.20' | N 89° 54' 44" E | | | |

Field Book No. A-2544

Date SEPTEMBER, 1966

GREISCH ENGINEERING CO INC.

under the Supervision of
 U.S. ARMY ENGINEER DISTRICT, TULSA
 CORPS OF ENGINEERS

LEGEND
 1. BOUNDARY
 2. CHANNEL CENTER
 3. 1966-70

21 13 19 MUSKOGEE

John A. Whipple