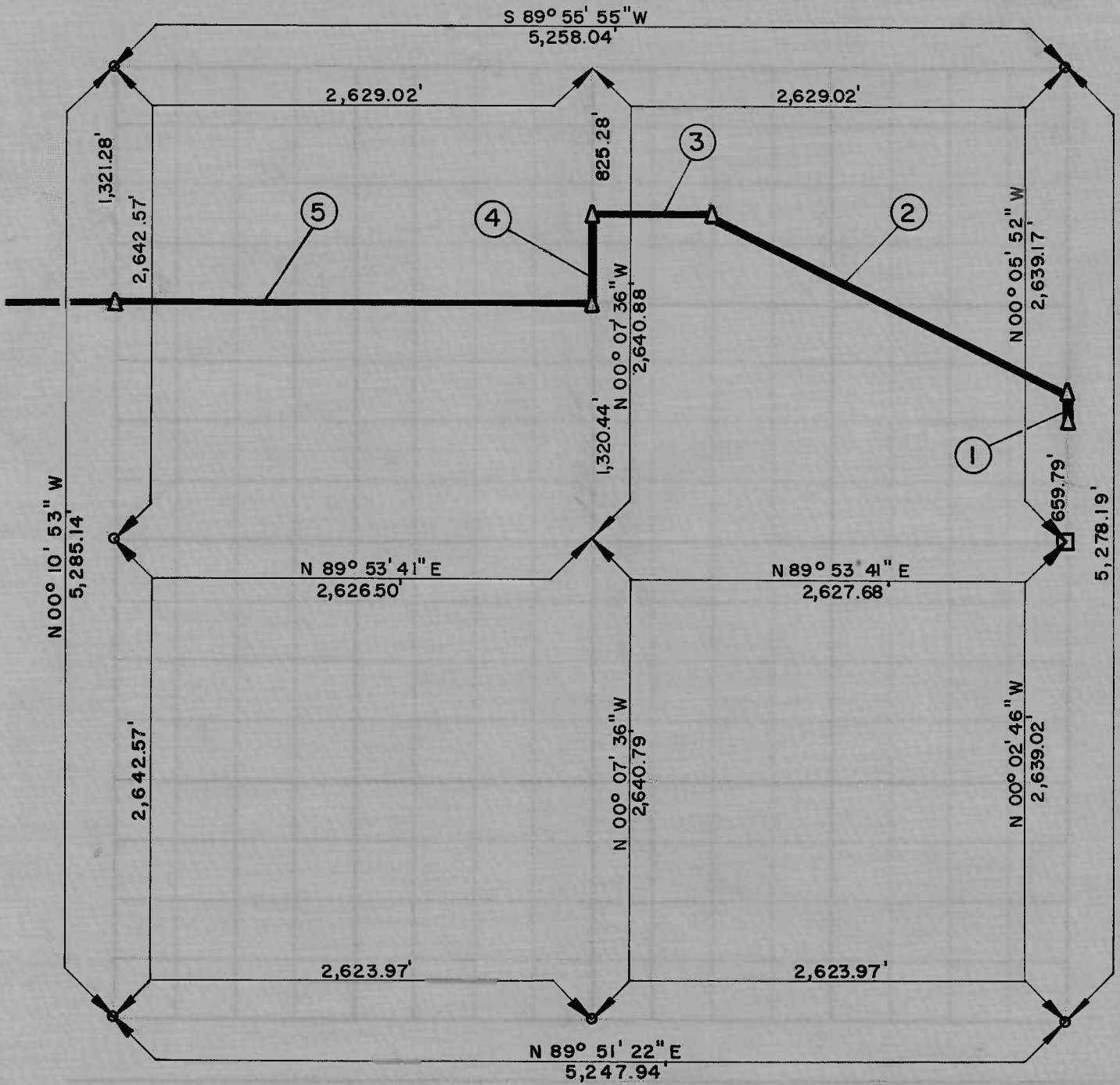


PARTIAL BOUNDARY SURVEYS
 LOCK AND DAM NO. 16, WEBBERS FALLS,
 ARKANSAS RIVER, OKLAHOMA

Performed Under Contract Number DACW 56 - 67 - C - 0035

SEC. 23 T. 13 N., R. 19 E COUNTY, MUSKOGEE



Course No.	Distance	Bearing	Course No.	Distance	Bearing
1	164.95	N 00° 05' 50" W			
2	2,206.21	N 63° 25' 34" W			
3	657.15	S 89° 55' 13" W			
4	495.16	S 00° 07' 36" W			
5	2,627.75	S 89° 54' 48" W			

Field Book No. A-2546, A-2547 Date OCTOBER, 1966

BREICH ENGINEERING CO. INC.

Under the Supervision of

U.S. ARMY ENGINEER DISTRICT, TULSA
 CORPS OF ENGINEERS

John W. Whipple