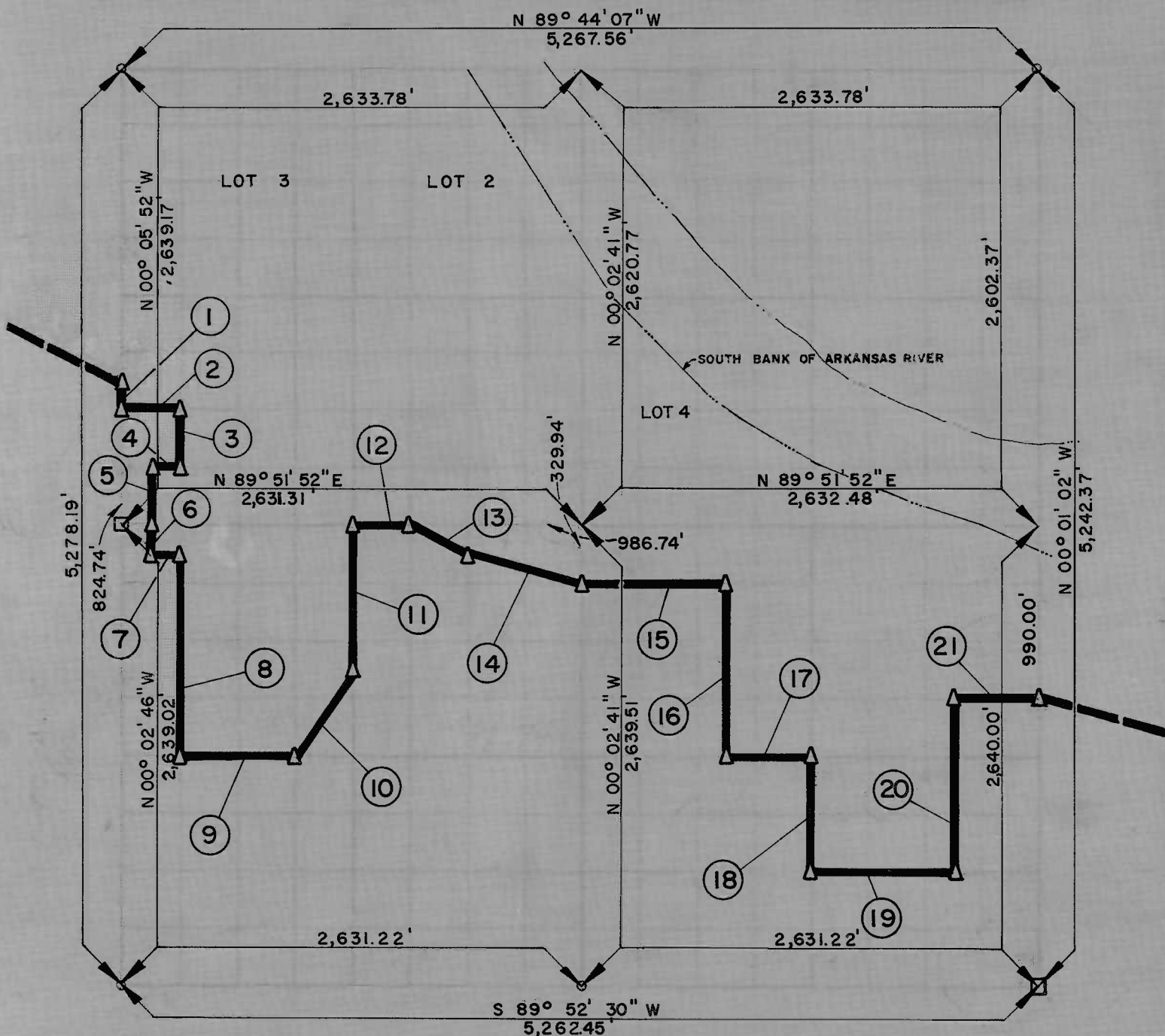


PARTIAL BOUNDARY SURVEYS
 LOCK AND DAM NO 16, WEBBERS FALLS,
 ARKANSAS RIVER, OKLAHOMA

Performed Under Contract Number DACW 36-67-C-0088

SEC 24 T 13 N, R 19 E COUNTY : MUSKOGEE



Point No.	Distance	Bearing	Point No.	Distance	Bearing
1	164.95	S 00° 05' 52" E	14	677.95	S 76° 03' 05" E
2	328.98	N 89° 57' 53" E	15	822.60	N 89° 51' 56" E
3	329.61	S 00° 05' 32" E	16	989.87	S 00° 02' 09" E
4	164.48	S 89° 54' 52" E	17	493.47	N 89° 52' 11" E
5	329.75	S 00° 05' 50" E	18	659.94	S 00° 01' 53" E
6	164.94	S 00° 02' 30" E	19	822.35	N 89° 52' 20" E
7	164.45	N 89° 51' 53" E	20	989.97	N 00° 01' 21" W
8	1,154.60	S 00° 02' 48" E	21	493.51	N 89° 52' 06" E
9	657.81	N 89° 52' 11" E			
10	594.60	N 33° 32' 20" E			
11	824.77	N 00° 02' 43" W			
12	328.91	N 89° 51' 52" E			
13	367.72	S 63° 28' 52" E			

A-2547, A-2550 Date OCTOBER, 1966

CERTIFICATE NO. 24 T 13 N, R 19 E MUSKOGEE

FRISCH ENGINEERING CO. INC.
 U.S. ARMY ENGINEER DISTRICT, TULSA
 CORPS OF ENGINEERS

John A. Whipple