

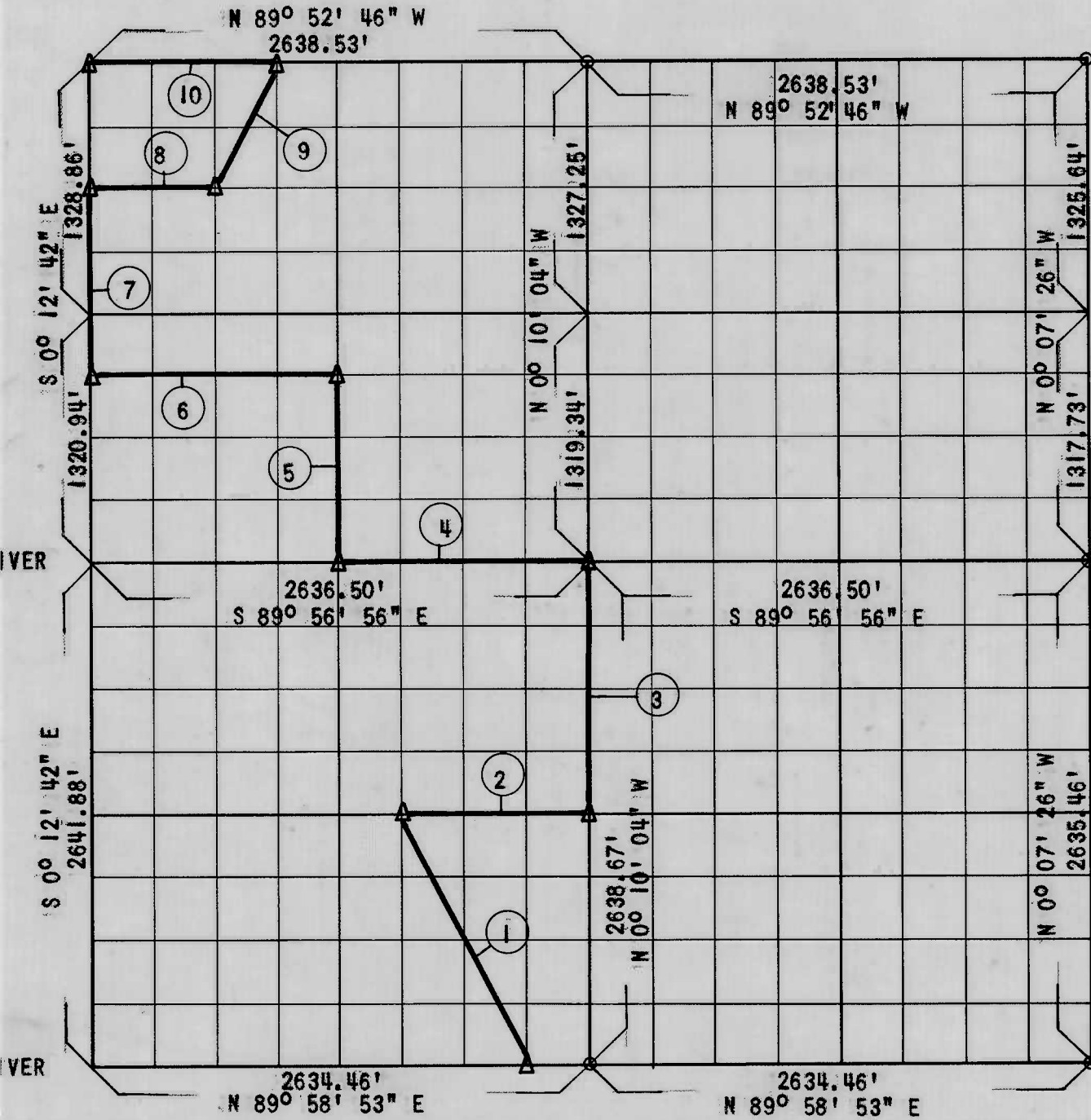
LOCK AND DAM NO. 16, WEBBERS FALLS

ARKANSAS RIVER, OKLAHOMA

Performed Under Contract Number DACW 56-68-C-0265

SEC. 2 T13N R19E

COUNTY: MUSKOGEE



Course No.	Distance	Bearing	Course No.	Distance	Bearing
1	1,476.83'	N 26° 40' 09" W			
2	988.30'	S 89° 59' 02" E			
3	1,320.50'	N 0° 10' 04" W			
4	1,319.94'	N 89° 56' 56" W			
5	990.10'	N 0° 11' 23" W			
6	1,318.63'	N 89° 55' 23" W			
7	994.67'	N 0° 12' 42" W			
8	659.50'	S 89° 53' 48" E			
9	739.95'	N 26° 16' 08" E			
10	989.45'	N 89° 52' 46" W			

Field Book No. A-2899

Date: 11-14-68

CERTIFICATE OF SURVEY

I HEREBY CERTIFY THAT THE ABOVE PLAT IS A TRUE AND CORRECT REPRESENTATION OF THE SURVEY MADE IN SECTION 2, T13N, R19E

SULLIVAN AND GILBERT INC.

Under the Supervision of
U.S. ARMY ENGINEER DISTRICT, TULSA
CORPS OF ENGINEERS

LEGEND

- △ Monument
- Original Corner
- Iron Pin
- HWY R/W Marker

William A. Gilbert
REGISTERED PROFESSIONAL ENGINEER