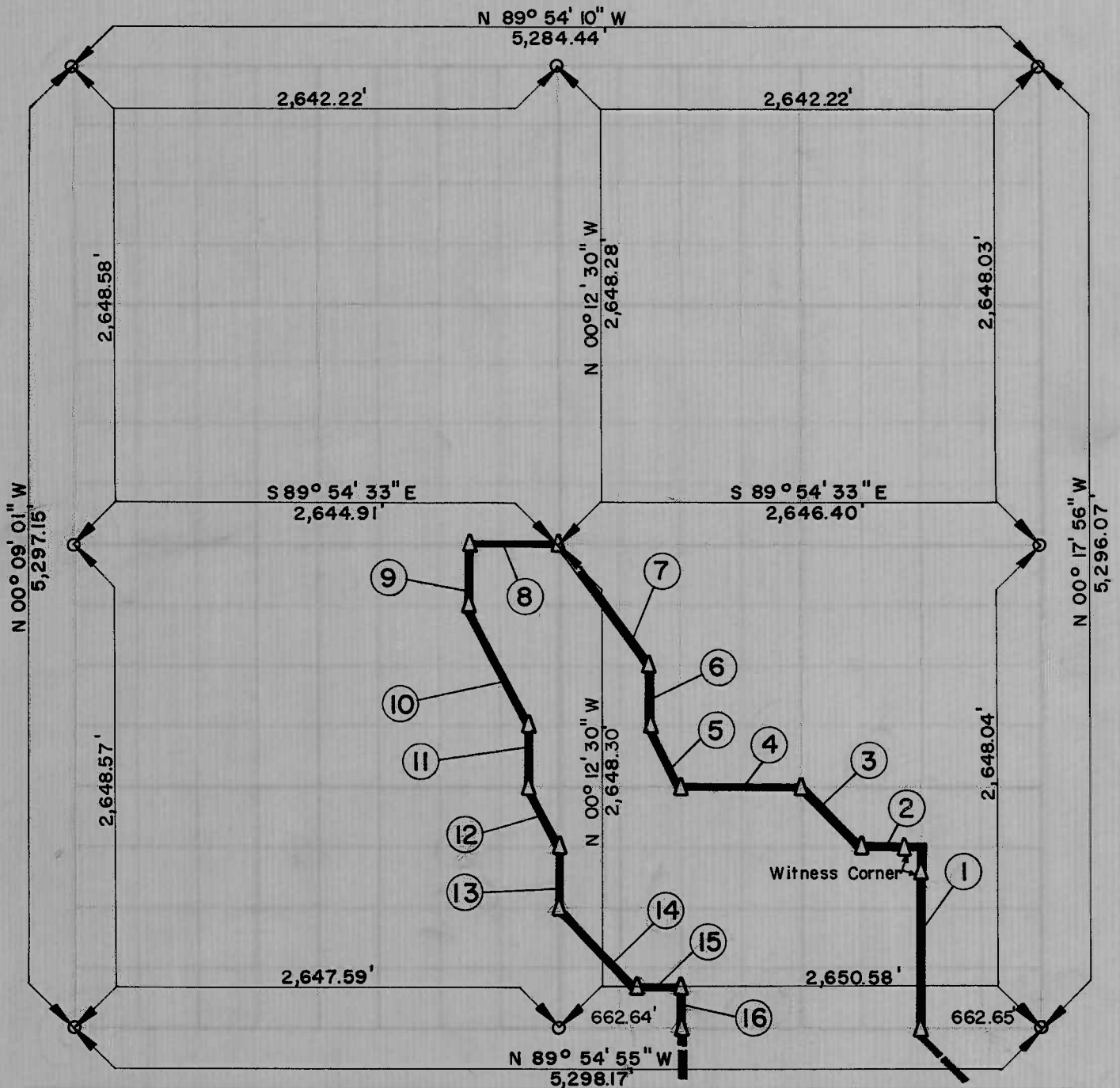


PARTIAL BOUNDARY SURVEYS  
 LOCK AND DAM NO. 16, WEBBERS FALLS,  
 ARKANSAS RIVER, OKLAHOMA

Performed Under Contract Number DACW 56 - 67 - C - 0035

SEC. 9 T. 13 N., R. 19 E COUNTY MUSKOGEE



| Course No. | Distance | Bearing         | Course No. | Distance | Bearing         |
|------------|----------|-----------------|------------|----------|-----------------|
| 1          | 993.03   | N 00° 16' 35" W | 14         | 601.68   | S 43° 53' 22" E |
| 2          | 331.13   | N 89° 54' 49" W | 15         | 247.00   | S 89° 54' 55" E |
| 3          | 469.60   | N 45° 05' 29" W | 16         | 229.06   | S 00° 13' 52" E |
| 4          | 662.12   | N 89° 54' 45" W |            |          |                 |
| 5          | 370.92   | N 26° 43' 46" W |            |          |                 |
| 6          | 331.03   | N 00° 13' 36" W |            |          |                 |
| 7          | 829.56   | N 36° 57' 40" W |            |          |                 |
| 8          | 495.93   | N 89° 54' 38" W |            |          |                 |
| 9          | 331.05   | S 00° 11' 50" E |            |          |                 |
| 10         | 741.58   | S 26° 41' 06" E |            |          |                 |
| 11         | 331.03   | S 00° 12' 09" E |            |          |                 |
| 12         | 370.82   | S 26° 41' 49" E |            |          |                 |
| 13         | 331.03   | S 00° 12' 30" E |            |          |                 |

Field Book No. A-2543 Date SEPTEMBER, 1966

BRESCH ENGINEERING CO. INC.

Under the Supervision of

U.S. ARMY ENGINEER DISTRICT, TULSA  
 CORPS OF ENGINEERS

LEGEND

- 1. MONUMENT
- 2. ORIGINAL CORNER
- 3. BENCH MARK

*John G. Whipple*