

PARTIAL BOUNDARY SURVEYS

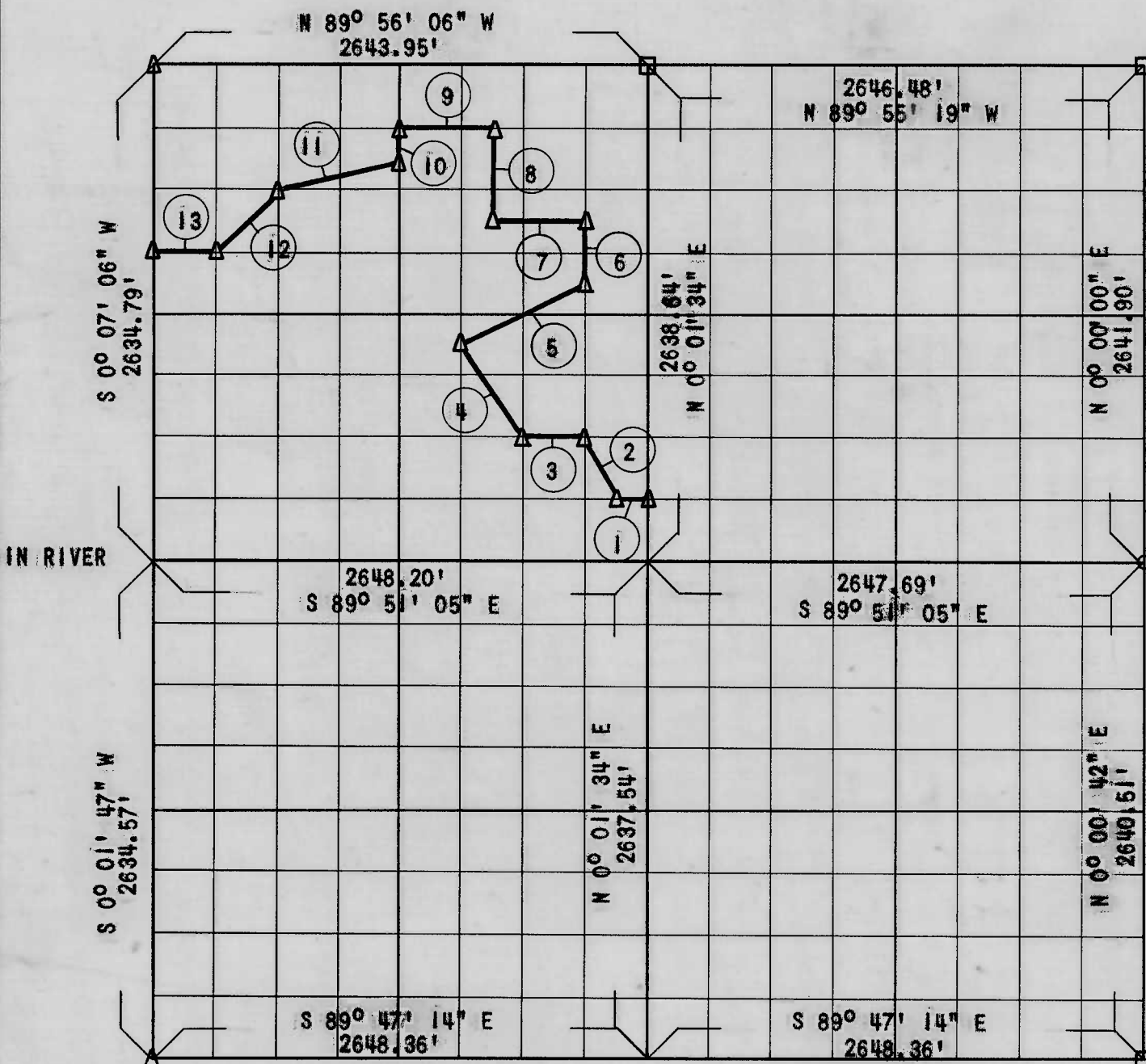
LOCK AND DAM NO. 16, WEBBERS FALLS

ARKANSAS RIVER, OKLAHOMA

Performed Under Contract Number DACW 56-68-C-0265

SEC. 15 T13N R20E

COUNTY: MUSKOGEE



Course No.	Distance	Bearing	Course No.	Distance	Bearing
1	165.48'	N 89° 51' 43" W			
2	369.22'	N 26° 35' 23" W			
3	330.89'	N 89° 52' 20" W			
4	595.30'	N 33° 42' 29" W			
5	738.83'	N 63° 36' 11" E			
6	330.12'	N 0° 02' 16" E			
7	496.64'	N 89° 54' 32" W			
8	494.52'	N 0° 03' 18" E			
9	495.84'	N 89° 55' 28" W			
10	164.79'	S 0° 04' 20" W			
11	681.44'	S 76° 05' 29" W			
12	466.80'	S 45° 12' 08" W			
13	330.69'	N 89° 54' 13" W			

Field Book No. A-2907

Date: 11-14-68

CERTIFICATE OF SURVEY

I HEREBY CERTIFY THAT THE ABOVE PLAT IS A TRUE AND CORRECT REPRESENTATION OF THE SURVEY MADE IN SECTION 15, T13N, R20E

SULLIVAN AND GILBERT INC.

Under the Supervision of

U.S. ARMY ENGINEER DISTRICT, TULSA
CORPS OF ENGINEERS

LEGEND

- △ Monument
- Original Corner
- Iron Pin
- HWY R/W Marker

William A. Sullivan
REGISTERED PROFESSIONAL ENGINEER