

PARTIAL BOUNDARY SURVEYS

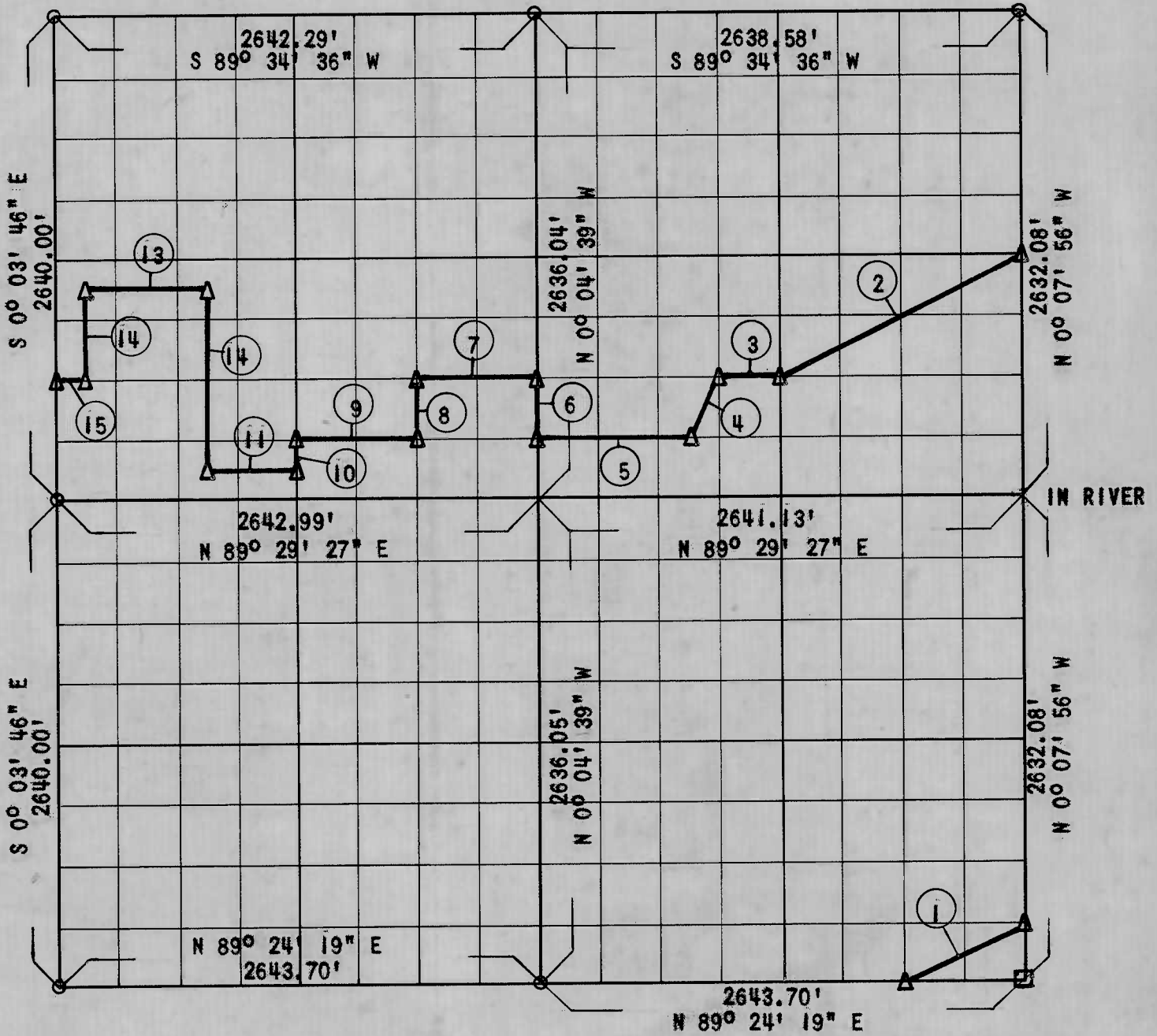
LOCK AND DAM NO. 16, WEBBERS FALLS

ARKANSAS RIVER, OKLAHOMA

Performed Under Contract Number DACW 56-68-C-0265

SEC. 17 T13N R20E

COUNTY: MUSKOGEE



Course No.	Distance	Bearing	Course No.	Distance	Bearing
1	740.66'	S 63° 02' 00" W	14	494.95'	S 0° 03' 49" E
2	1,478.81'	S 63° 06' 53" W	15	165.52'	S 89° 28' 53" W
3	330.06'	S 89° 30' 44" W			
4	369.40'	S 26° 26' 27" W			
5	826.00'	S 89° 30' 06" W			
6	329.30'	N 0° 04' 39" W			
7	660.70'	S 89° 30' 44" W			
8	329.63'	S 0° 04' 25" E			
9	660.73'	S 89° 30' 06" W			
10	164.88'	S 0° 04' 12" E			
11	495.55'	S 89° 29' 46" W			
12	989.54'	N 0° 04' 02" W			
13	660.67'	S 89° 31' 42" W			

Field Book No. A-2902

Date: 11-14-68

CERTIFICATE OF SURVEY

I HEREBY CERTIFY THAT THE ABOVE PLAT IS A TRUE AND CORRECT REPRESENTATION OF THE SURVEY MADE IN SECTION 17, T13N, R20E

SULLIVAN AND GILBERT INC.

Under the Supervision of

U.S. ARMY ENGINEER DISTRICT, TULSA
CORPS OF ENGINEERS

LEGEND

- △ Monument
- Original Corner
- Iron Pin
- HWY R/W Marker

William A. J. ...
REGISTERED PROFESSIONAL ENGINEER