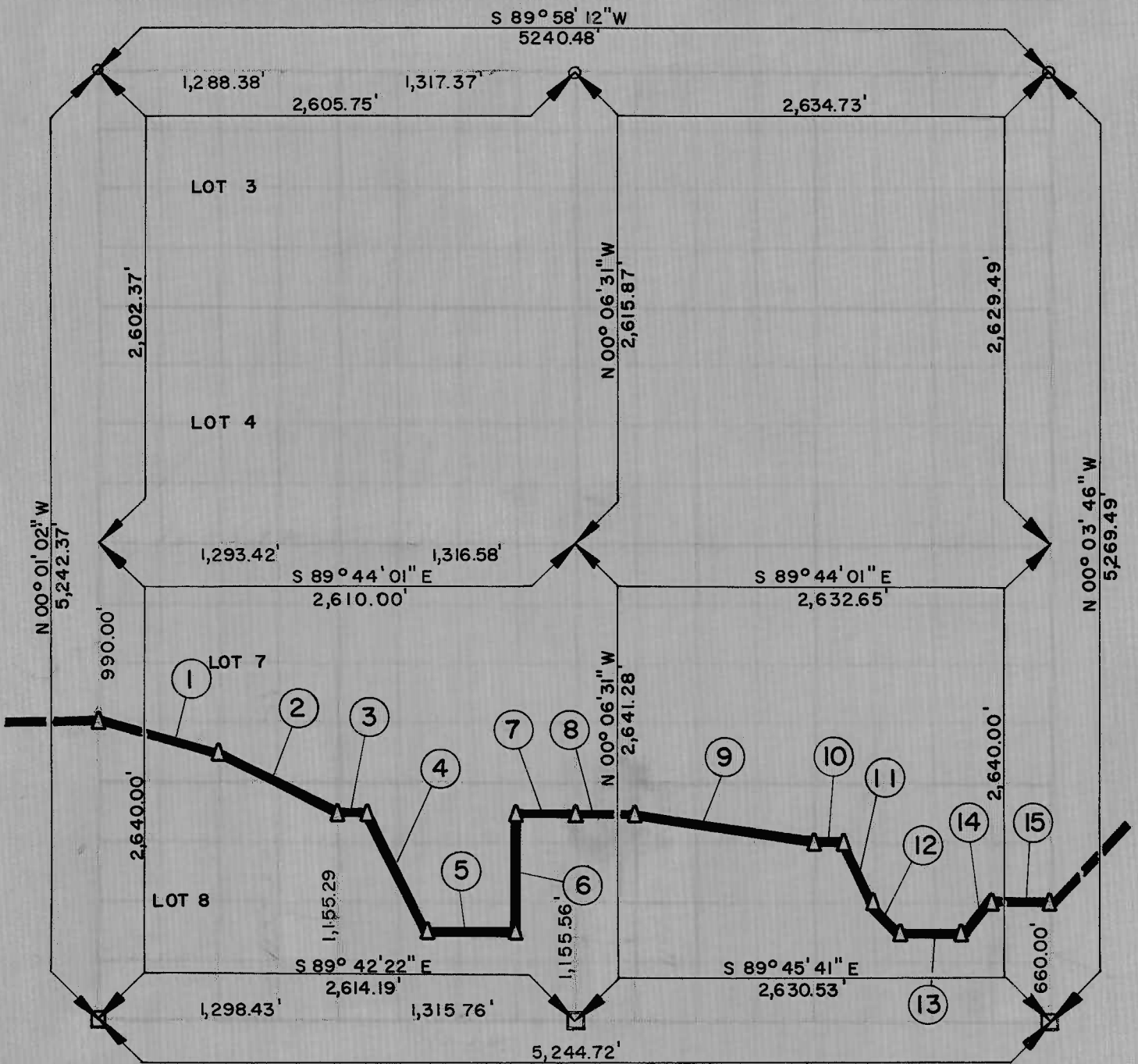


PARTIAL BOUNDARY SURVEYS
 LOCK AND DAM NO. 16, WEBBERS FALLS,
 ARKANSAS RIVER, OKLAHOMA

Performed Under Contract Number DACW 56-67-G-0035

SEC. 19 T. 13 N, R. 20 E COUNTY: MUSKOGEE



Course No.	Distance	Bearing	Course No.	Distance	Bearing
1	669.31	S 75° 27' 00" E	14	232.33	N 44° 59' 22" E
2	729.13	S 62° 48' 18" E	15	328.88	S 89° 45' 15" E
3	164.51	S 89° 43' 07" E			
4	739.72	S 26° 31' 42" E			
5	493.47	S 89° 42' 41" E			
6	660.28	N 00° 06' 43" W			
7	329.03	S 89° 43' 05" E			
8	328.92	S 89° 44' 57" E			
9	1,001.46	S 80° 15' 49" E			
10	164.46	S 89° 45' 02" E			
11	369.61	S 26° 30' 01" E			
12	233.62	S 44° 48' 46" E			
13	328.86	S 89° 45' 22" E			

A-2550
 A-2551

OCTOBER, 1966

CERTIFICATE OF SURVEY
 19 13 20 MUSKOGEE

BRECH ENGINEERING CO. INC.

John A. Whipple

Under the Supervision of
 U.S. ARMY ENGINEER DISTRICT, TULSA
 CORPS OF ENGINEERS