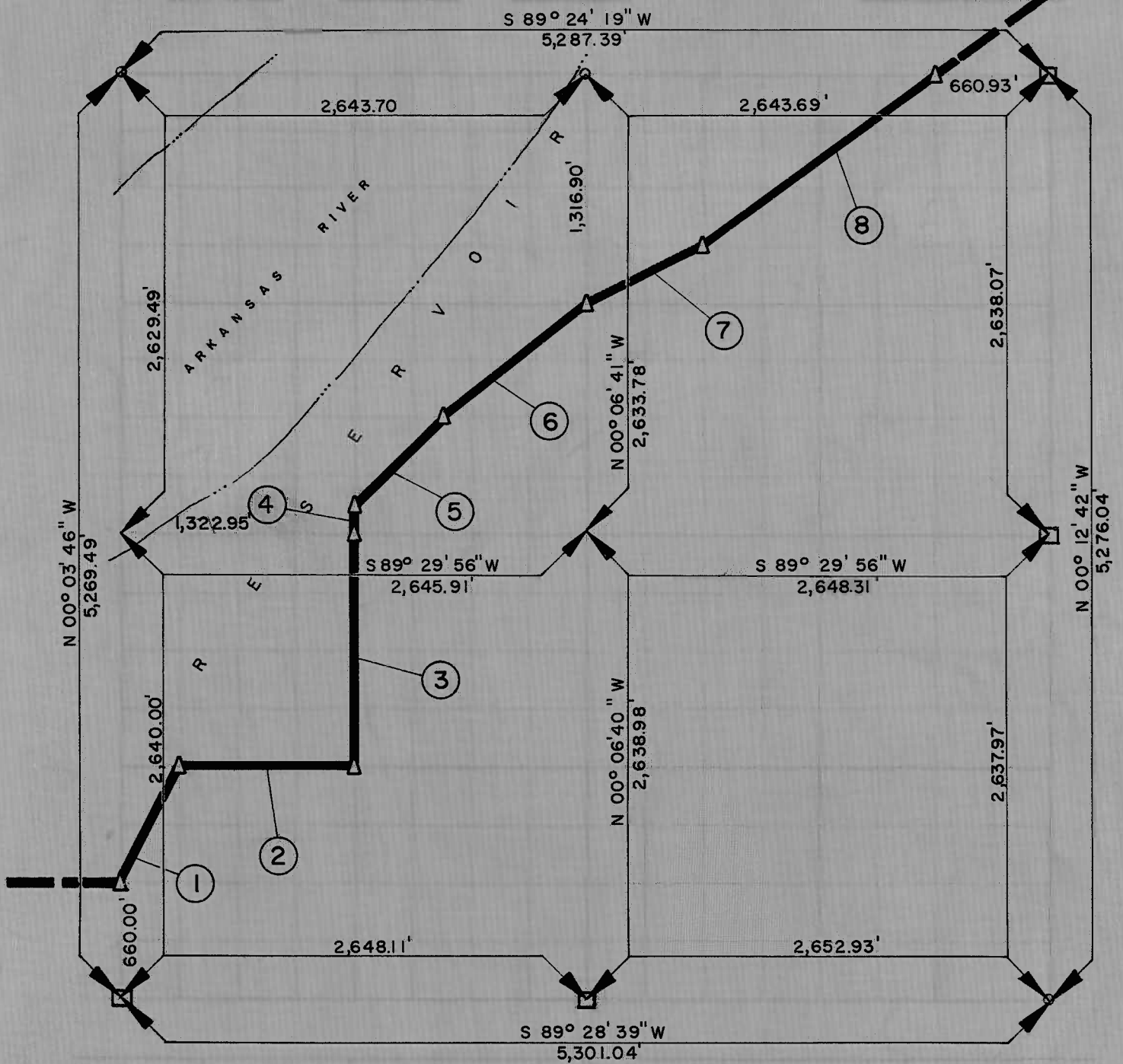


PARTIAL BOUNDARY SURVEYS  
 LOCK AND DAM NO. 16, WEBBERS FALLS,  
 ARKANSAS RIVER, OKLAHOMA

Performed Under Contract Number DACW 38-67-C-0035

SEC. 20 T. 13 N., R. 20 E. COUNTY: MUSKOGEE



1	740.61	N 26° 28' 24" E
2	992.63	N 89° 29' 18" E
3	1,319.74	N 00° 05' 11" W
4	164.48	N 00° 05' 26" W
5	702.31	N 44° 50' 33" E
6	1,060.56	N 51° 05' 55" E
7	741.06	N 63° 03' 57" E
8	1,656.64	N 52° 47' 31" E

A-2552, A-2555

OCTOBER, 1966

*John G. Whipple*