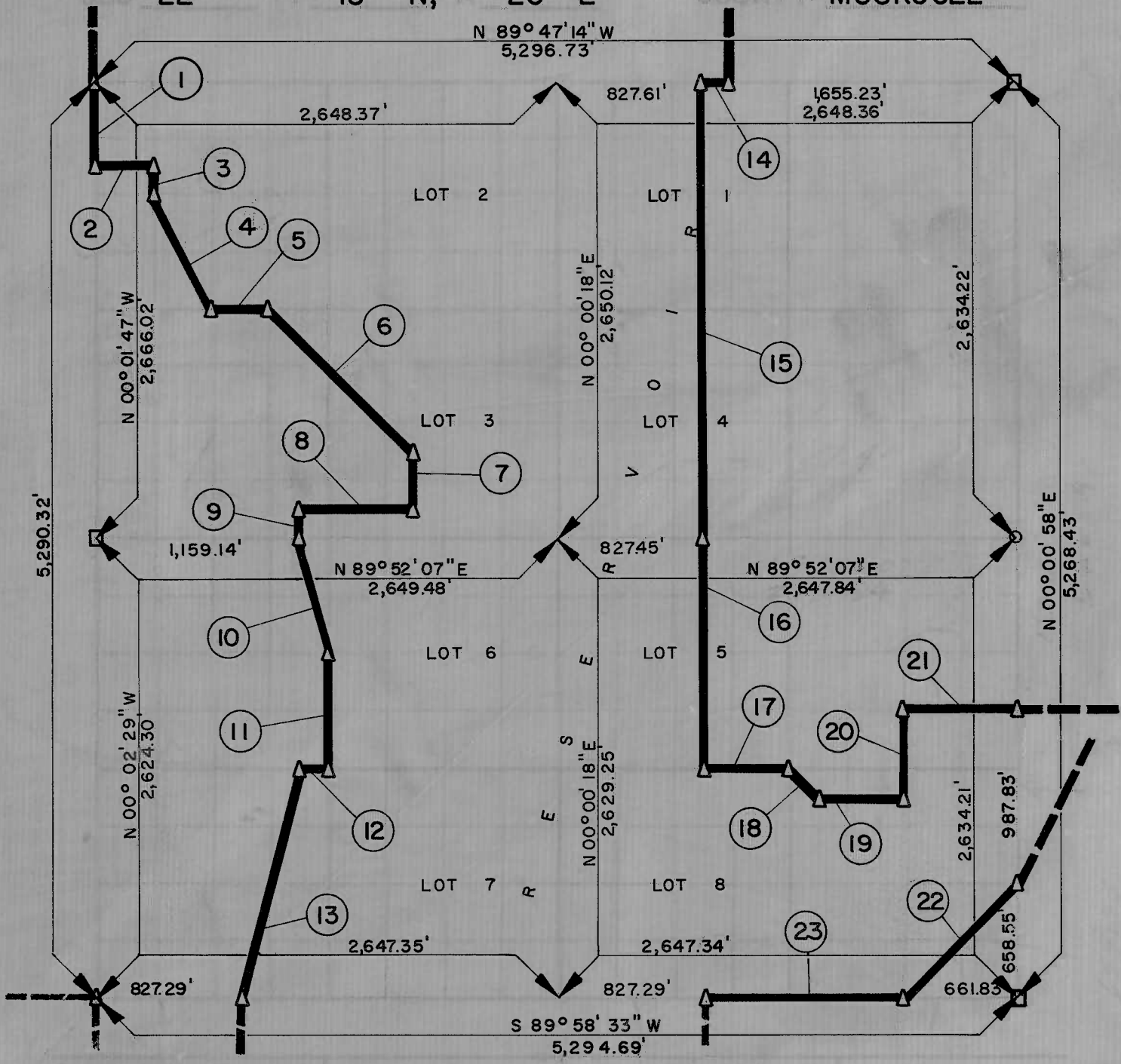


PARTIAL BOUNDARY SURVEYS
 LOCK AND DAM NO. 16, WEBBERS FALLS,
 ARKANSAS RIVER, OKLAHOMA

Performed Under Contract Number DACW 56-67-C-0035

SEC 22 T 13 N, R 20 E COUNTY: MUSKOGEE



Course No.	Distance	Bearing	Course No.	Distance	Bearing
1	499.88	S 00° 01' 47" W	14	165.52	N 89° 47' 14" W
2	331.07	S 89° 51' 06" E	15	2,645.15	S 00° 00' 30" W
3	166.50	S 00° 01' 39" W	16	1,315.40	S 00° 00' 31" W
4	743.85	S 26° 24' 18" E	17	496.42	N 89° 55' 20" E
5	331.12	S 89° 57' 33" E	18	233.15	S 45° 12' 13" E
6	1,172.31	S 44° 54' 23" E	19	496.42	N 89° 55' 44" E
7	331.89	S 00° 00' 50" W	20	493.68	N 00° 01' 42" E
8	662.35	S 89° 53' 25" W	21	661.92	N 89° 54' 32" E
9	166.19	S 00° 01' 02" W	22	933.98	S 45° 08' 17" W
10	676.93	S 14° 10' 39" E	23	1,158.22	S 89° 58' 33" W
11	656.69	S 00° 01' 06" E			
12	165.53	S 89° 55' 20" W			
13	1,354.30	S 14° 07' 19" W			

A-2555, A-2556 Date: NOVEMBER, 1966

BRESCHE ENGINEERING CO. INC.

Under the Supervision of

U.S. ARMY ENGINEER DISTRICT, TULSA
 CORPS OF ENGINEERS

22 13 20 MUSKOGEE

John G. Whipple