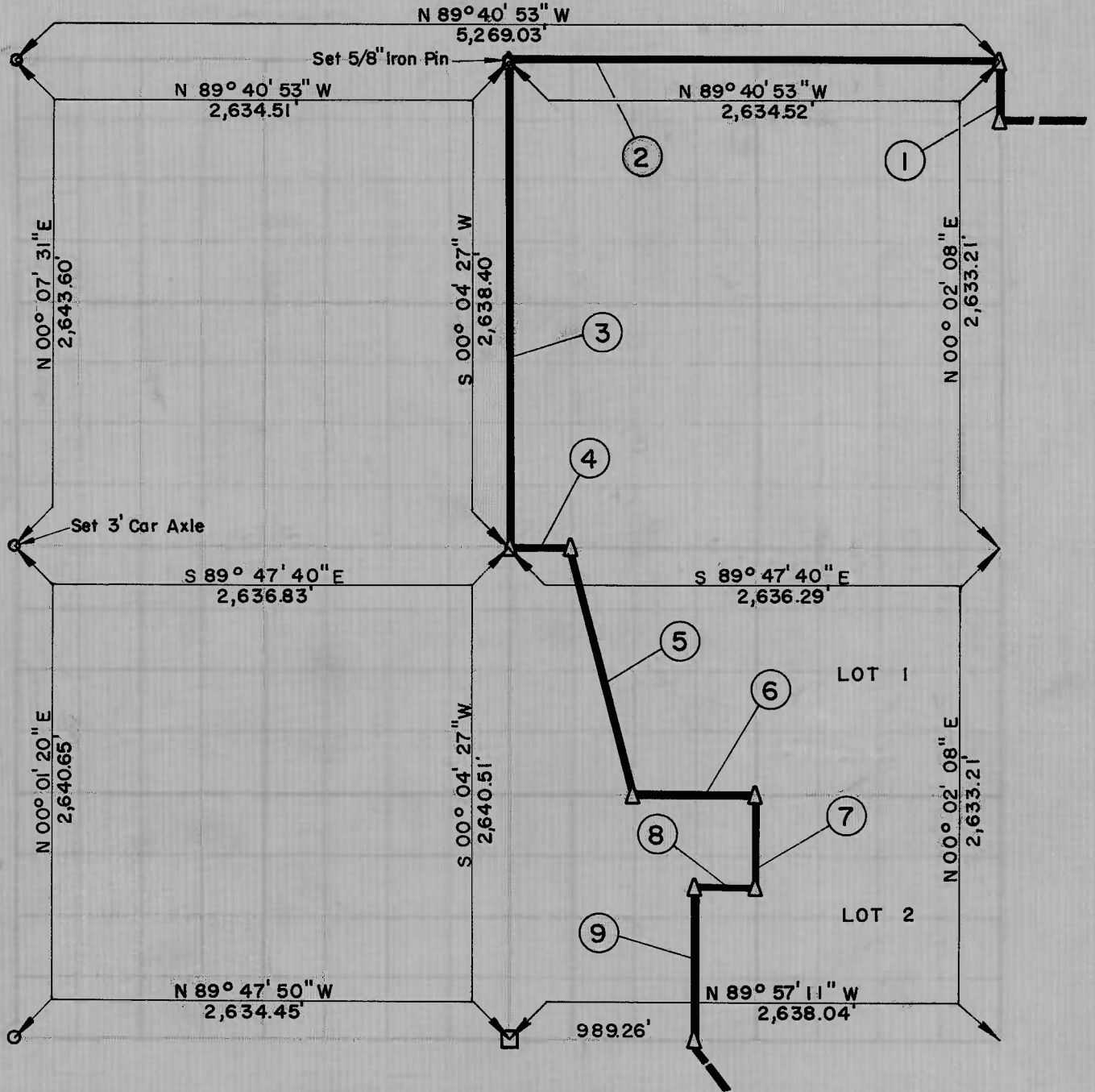


PARTIAL BOUNDARY SURVEYS
 LOCK AND DAM NO. 16, WEBBERS FALLS,
 ARKANSAS RIVER, OKLAHOMA

Performed Under Contract Number DACW 56-67-C-0035

SEC. 28 T 13 N, R 20 E COUNTY, MUSKOGEE



Course No.	Distance	Bearing	Course No.	Distance	Bearing
1	329.15	N 00° 02' 08" E			
2	2,634.52	N 89° 40' 53" W			
3	2,638.40	S 00° 04' 27" W			
4	329.53	S 89° 47' 40" E			
5	1,360.66	S 13° 57' 03" E			
6	659.29	S 89° 52' 25" E			
7	494.41	S 00° 03' 20" W			
8	329.69	N 89° 54' 13" W			
9	824.30	S 00° 03' 33" W			

CERTIFICATE OF SURVEY Book No. A-2557, A-2559 Date NOVEMBER, 1966
 BREISCH ENGINEERING CO. INC.
 Under the Supervision of
 U.S. ARMY ENGINEER DISTRICT, TULSA
 CORPS OF ENGINEERS

28 13 20 MUSKOGEE

John G. Whipple

LEGEND
 (Symbol) MONUMENT
 (Symbol) ORIGINAL SURFACE