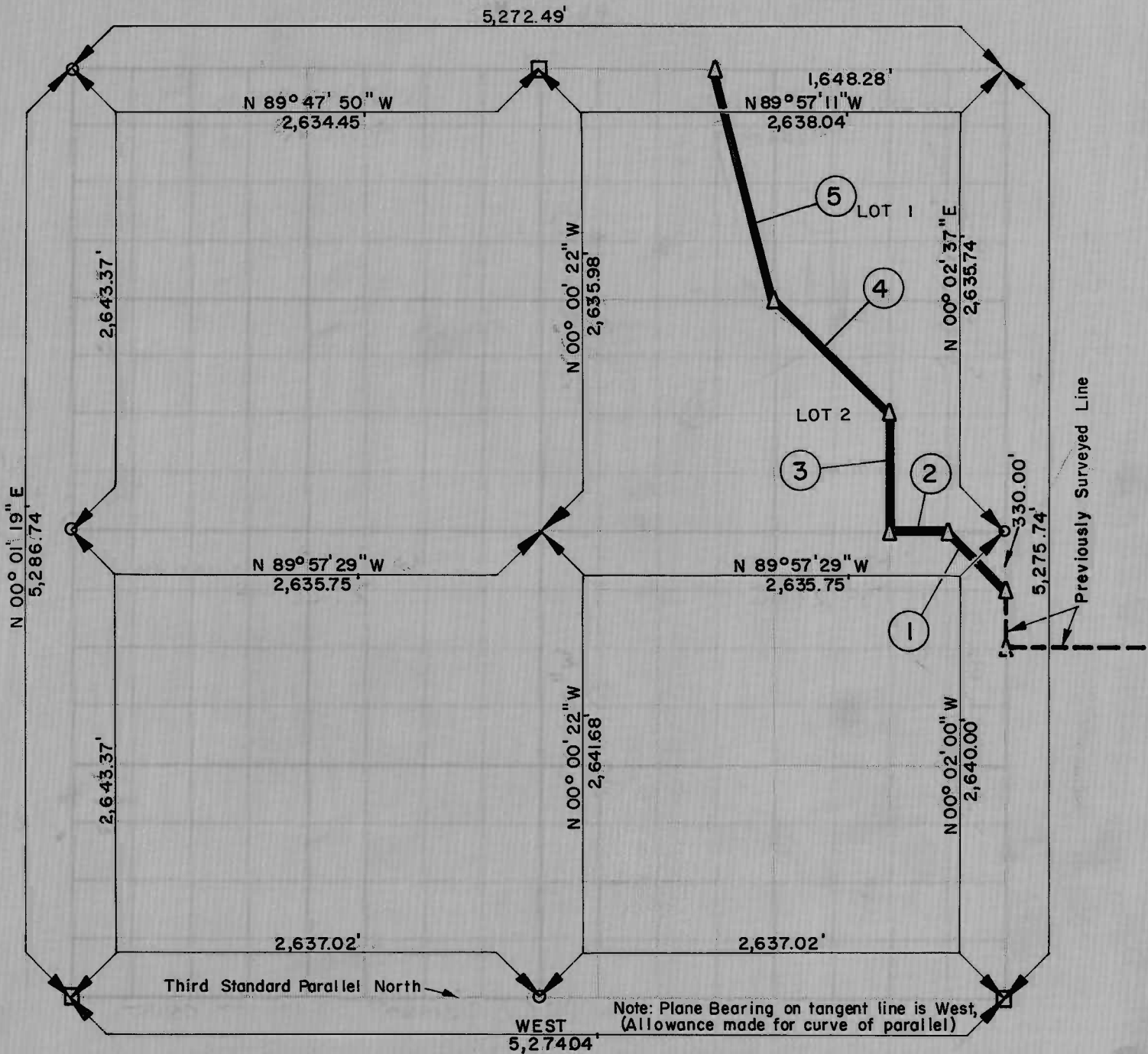


PARTIAL BOUNDARY SURVEYS
 LOCK AND DAM NO. 16, WEBBERS FALLS,
 ARKANSAS RIVER, OKLAHOMA

Performed Under Contract Number DACW 56-87-C-0035

SEC 33 T 13 N, R 20 E COUNTY: MUSKOGEE



Course No.	Distance	Bearing	Course No.	Distance	Bearing
1	466.62	N 44°56'58"W			
2	329.47	N 89°57'29"W			
3	658.95	N 00°01'53"E			
4	932.20	N 44°58'28"W			
5	1,358.71	N 14°01'37"W			

Field Book No. A-2557, A-2559 Date DECEMBER, 1966

BREISCH ENGINEERING CO. INC.

Under the Supervision of

U.S. ARMY ENGINEER DISTRICT, TULSA
 CORPS OF ENGINEERS

LEGEND
 A. SURVEYOR
 B. ADJUTANT
 C. JOURNAL NUMBER
 D. DATE

33 13 20 MUSKOGEE

John G. White