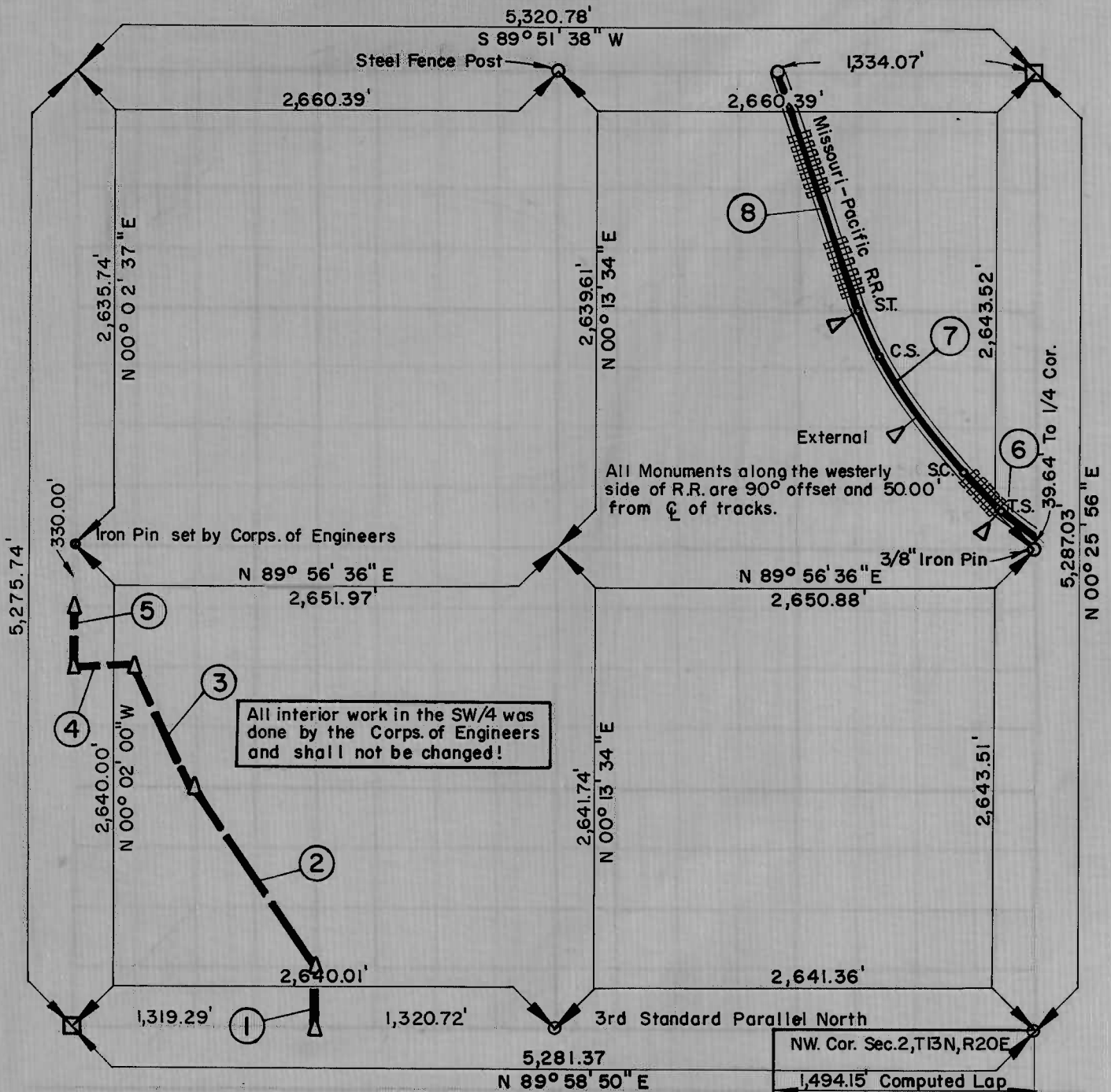


PARTIAL BOUNDARY SURVEYS
 LOCK AND DAM NO. 16, WEBBERS FALLS,
 ARKANSAS RIVER, OKLAHOMA

Performed Under Contract Number DACW 56-67-C-0035

SEC 34 T 13 N, R 20 E COUNTY: MUSKOGEE



Course No.	Distance	Bearing
1	330.00	N 00° 02' 00" W
2	1,191.56	N 33° 39' 57" W
3	736.41	N 26° 35' 54" W
4	330.00	S 89° 56' 56" W
5	330.00	N 00° 02' 00" W
TIE	330.00	N 00° 02' 00" W
6	158.44	N 50° 32' 36" W
7	385.00	Spiral Curve, Total Deflection=1°44'30" Rt., Length= 385.00'
7A	724.47	Curve, I=34°07'33" Rt, D=3°12', R=1,790.73', CL.= 724.47'
7B	388.50	Spiral Curve, Total Deflection= 2°04'06" Rt., Length = 388.50'
8	1,335.85	N 16° 25' 03" W

A-2558, A-2559 JANUARY, 1967
 A-2561, A-2564 & A-2560

BRIDGES ENGINEERING CO. INC.

U.S. ARMY ENGINEER DISTRICT, TULSA
 CORPS OF ENGINEERS

John L. Whipple