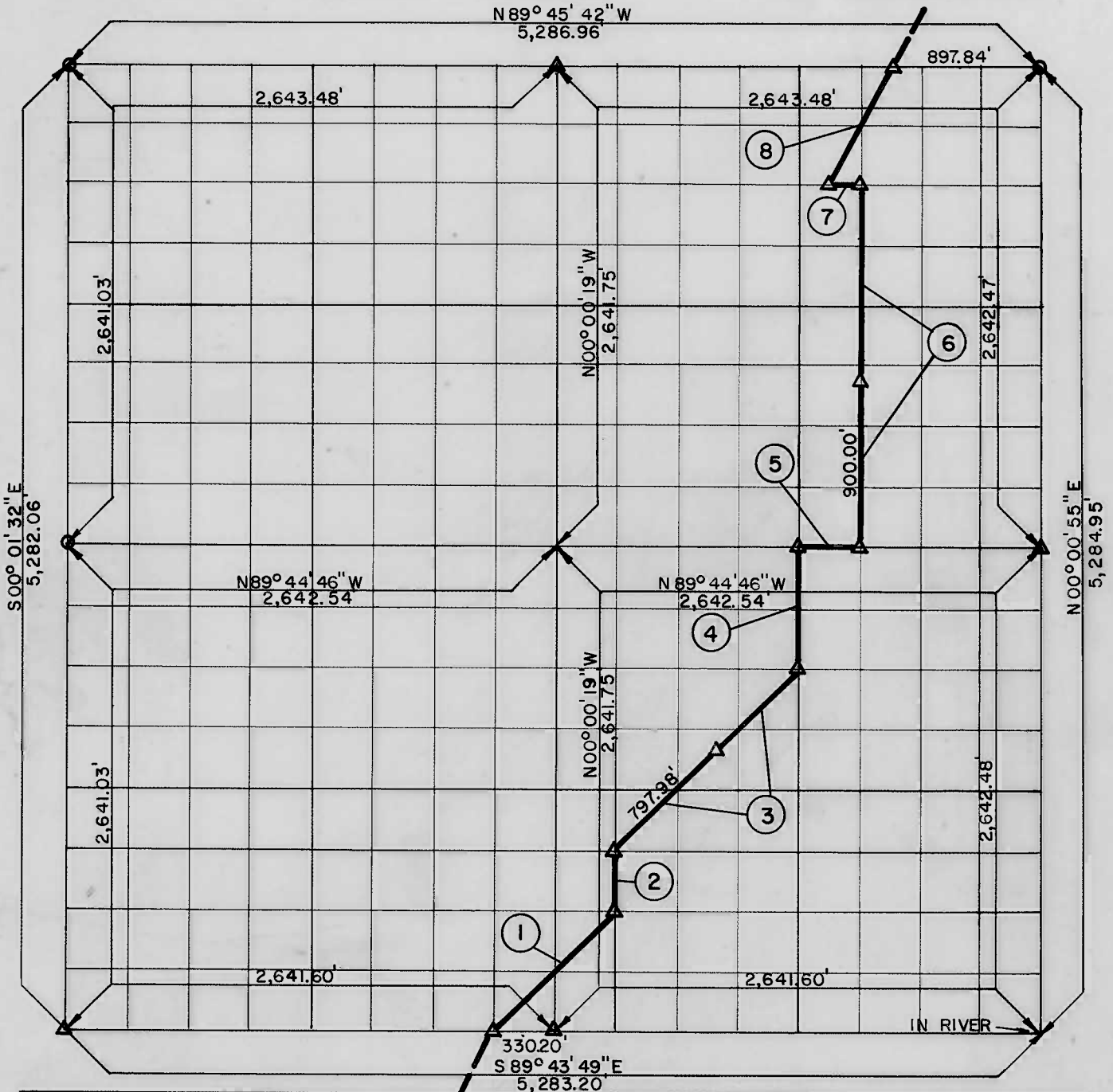


PARTIAL BOUNDARY SURVEYS
 AREA "B-1"
 LOCK AND DAM NO. 16, WEBBERS FALLS,
 ARKANSAS RIVER, OKLAHOMA

Performed Under Contract Number DACW 56 - 68 - C - 0269

SEC. 12 T 14 N, R 19 E COUNTY, MUSKOGEE



Course No.	Distance	Bearing	Course No.	Distance	Bearing
1	931.78	N 45° 07' 51" E	8	703.44	N 20° 21' 15" E
2	330.23	N 00° 00' 10" W			
3	1397.98	N 45° 07' 58" E			
4	660.53	N 00° 00' 18" E			
5	330.32	S 89° 44' 46" E			
6	1981.65	N 00° 00' 27" E			
7	151.25	N 89° 45' 28" W			

CERTIFICATE OF SURVEY
 I HEREBY CERTIFY THAT THE ABOVE PLAT IS A TRUE AND CORRECT REPRESENTATION OF THE SURVEY MADE IN SECTION 12, T. 14 N., R. 19 E., MUSKOGEE COUNTY, OKLAHOMA.
 REGISTERED PROFESSIONAL ENGINEER
 976
 L. MANSUR

Field Book No. A-2942 Date NOVEMBER, 1968

MANSUR-STEELE-WILLIAMS, INC.
 CONSULTING ENGINEERS

Under the Supervision of
 U.S. ARMY ENGINEER DISTRICT, TULSA
 CORPS OF ENGINEERS

LEGEND
 Δ MONUMENT
 □ ORIGINAL CORNER
 ○ IRON PIN