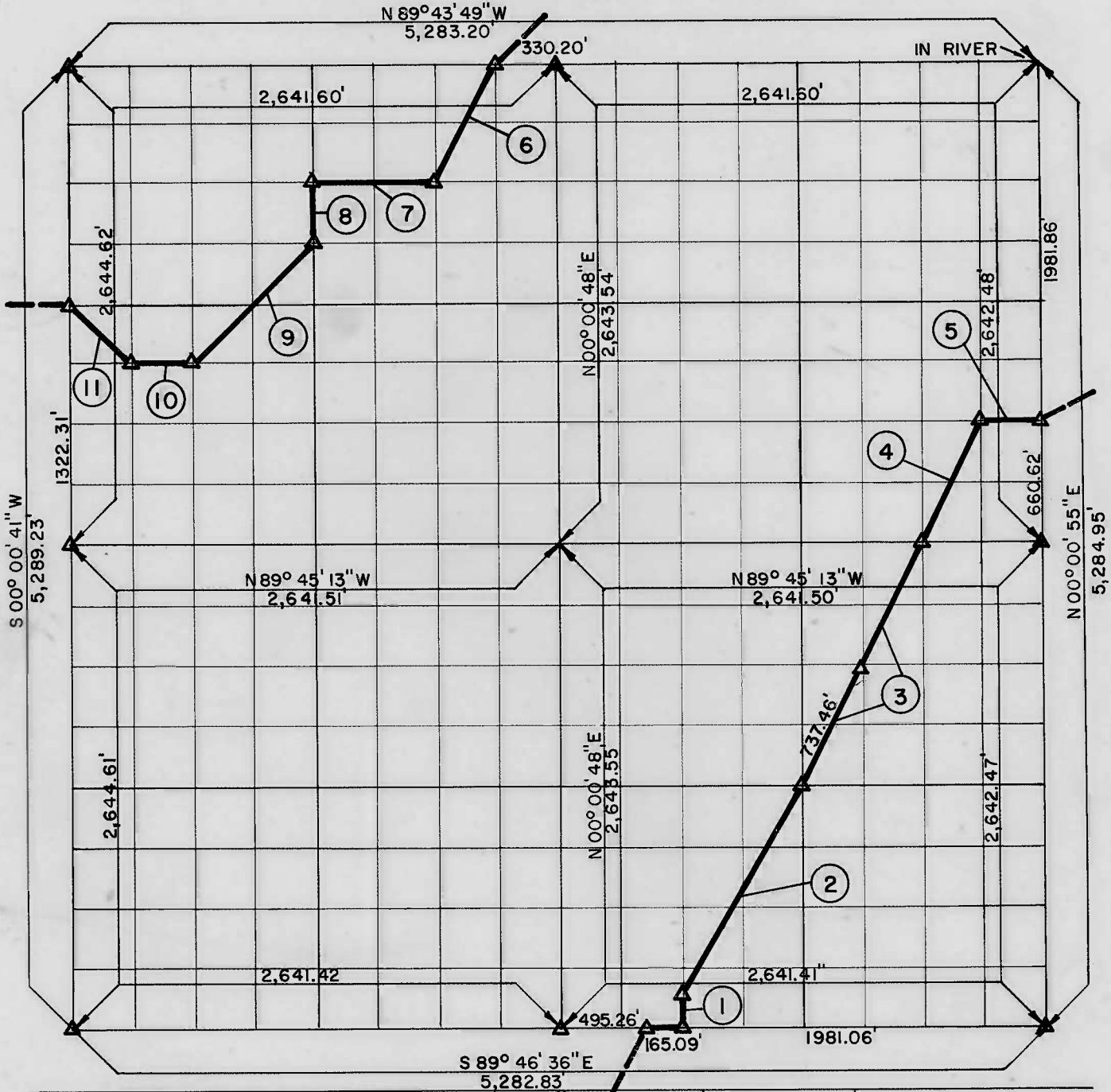


PARTIAL BOUNDARY SURVEYS  
AREA "B-1"  
LOCK AND DAM NO. 16, WEBBERS FALLS,  
ARKANSAS RIVER, OKLAHOMA

Performed Under Contract Number DACW 56 - 68 - C - 0269

SEC. 13 T 14 N, R 19 E COUNTY, MUSKOGEE



Course No.	Distance	Bearing	Course No.	Distance	Bearing
1	165.21	N 00° 00' 50" E	8	330.51	S 00° 00' 45" W
2	1329.47	N 29° 47' 45" E	9	932.39	S 45° 06' 22" W
3	1474.93	N 26° 36' 45" E	10	330.19	N 89° 44' 41" W
4	737.38	N 26° 37' 04" E	11	468.23	N 44° 50' 01" W
5	330.19	S 89° 44' 51" E			
6	737.53	S 26° 36' 35" W			
7	660.39	N 89° 44' 10" W			

CERTIFICATE OF SURVEY

WE HEREBY CERTIFY THAT THE ABOVE PLAT IS A TRUE AND CORRECT REPRESENTATION OF THE SURVEY MADE IN SECTION 13, T 14 N, R 19 E, MUSKOGEE COUNTY, OKLAHOMA.

Field Book No. A-2945

Date NOVEMBER, 1968



**MANSUR-STEELE-WILLIAMS, INC.**  
CONSULTING ENGINEERS

Under the Supervision of  
**U.S. ARMY ENGINEER DISTRICT, TULSA**  
CORPS OF ENGINEERS

LEGEND

- △ MONUMENT
- ORIGINAL CORNER
- IRON PIN

*Cline L. Mansur*  
REGISTERED PROFESSIONAL ENGINEER