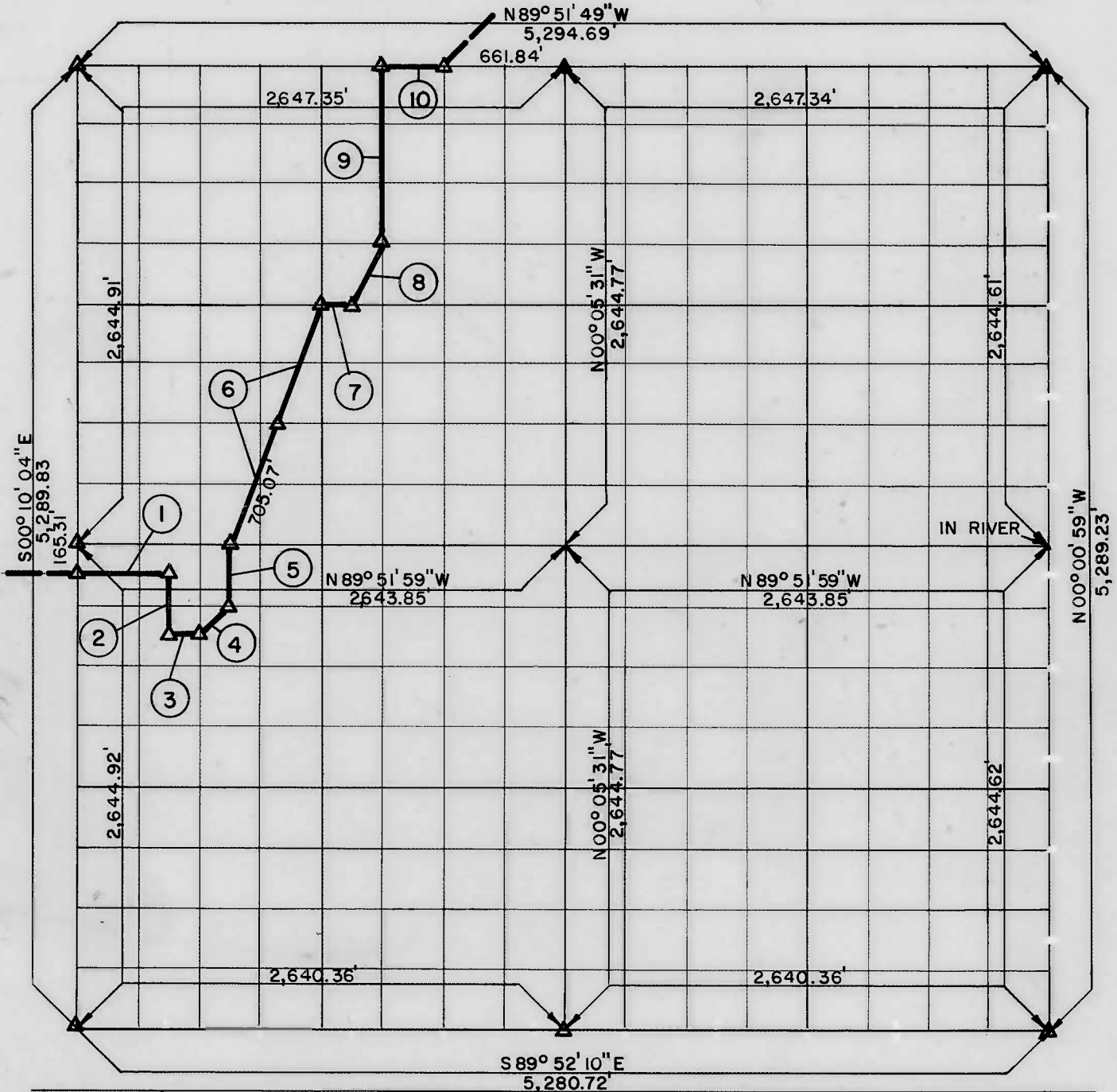


PARTIAL BOUNDARY SURVEYS
 AREA "B-1"
 LOCK AND DAM NO. 16, WEBBERS FALLS,
 ARKANSAS RIVER, OKLAHOMA

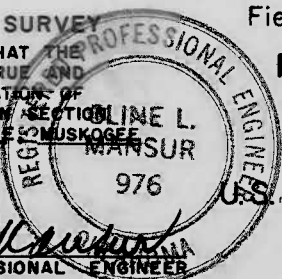
Performed Under Contract Number DACW 56 - 68 - C - 0269

SEC. 23 T 14 N, R 19 E COUNTY, MUSKOGEE



Course No.	Distance	Bearing	Course No.	Distance	Bearing
1	495.68	S 89° 52' 00" E	8	368.98	N 26° 30' 09" E
2	330.61	S 00° 09' 12" E	9	991.81	N 00° 07' 14" W
3	165.20	S 89° 52' 01" E	10	330.92	S 89° 51' 49" E
4	233.15	N 44° 58' 36" E			
5	330.61	N 00° 08' 38" W			
6	1410.14	N 20° 27' 05" E			
7	165.35	S 89° 51' 54" E			

CERTIFICATE OF SURVEY
 I HEREBY CERTIFY THAT THE ABOVE PLAT IS A TRUE AND CORRECT REPRESENTATION OF THE SURVEY MADE IN SECTION 23, T 14 N, R 19 E, MUSKOGEE COUNTY, OKLAHOMA.



Field Book No. A-2940 Date NOVEMBER, 1968

MANSUR-STEELE-WILLIAMS, INC.
 CONSULTING ENGINEERS

LEGEND
 Δ MONUMENT
 □ ORIGINAL CORNER
 ○ IRON PIN

Under the Supervision of
 U.S. ARMY ENGINEER DISTRICT, TULSA
 CORPS OF ENGINEERS

Mansur
 REGISTERED PROFESSIONAL ENGINEER