

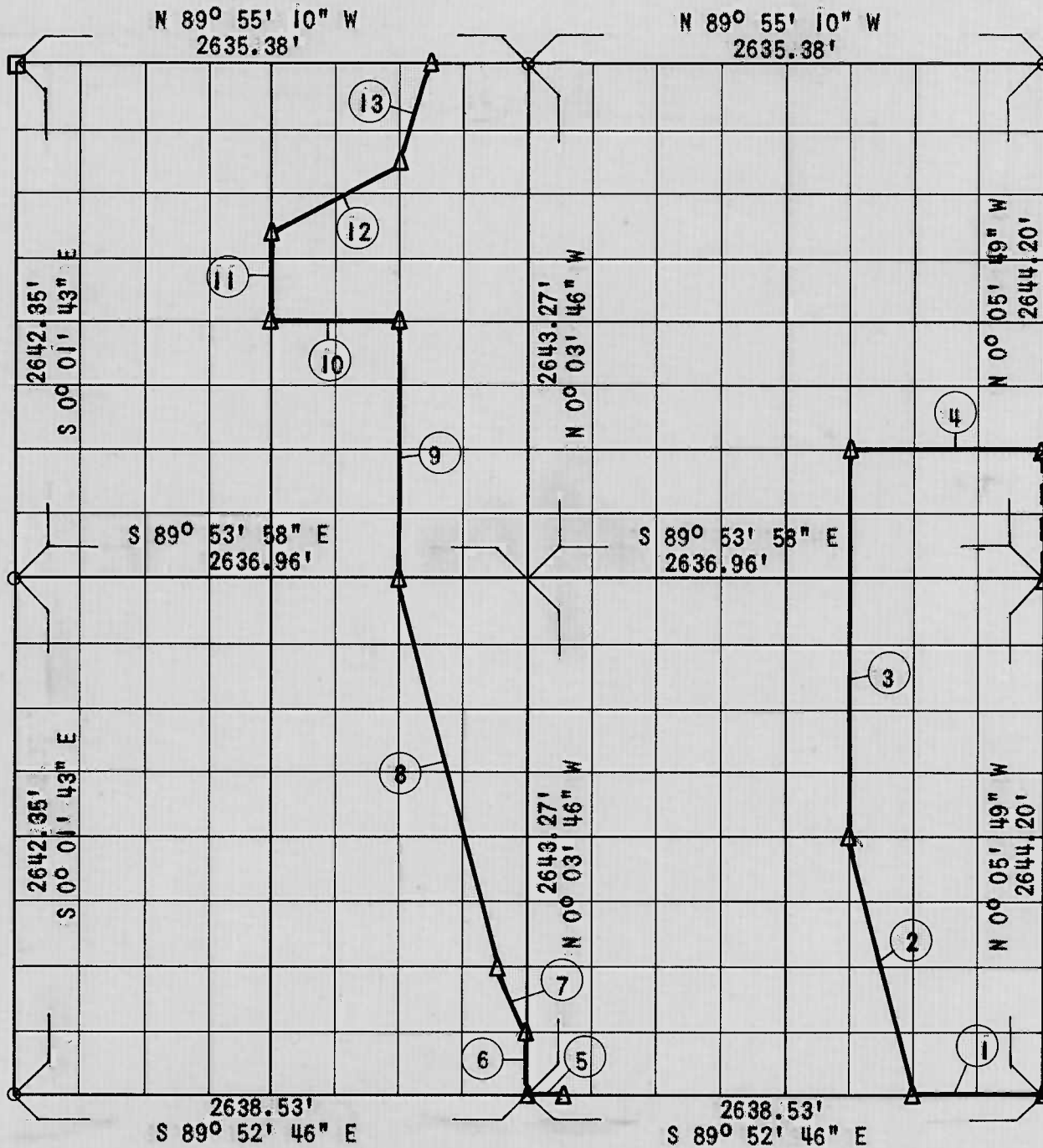
LOCK AND DAM NO. 16, WEBBERS FALLS

ARKANSAS RIVER, OKLAHOMA

Performed Under Contract Number DACW 56-68-C-0265

SEC. 34 T14N R19E

COUNTY: MUSKOGEE



Course No.	Distance	Bearing	Course No.	Distance	Bearing
1	659.63'	N 89° 52' 46" W			
2	1,363.59'	N 14° 04' 52" W			
3	1,983.00'	N 0° 05' 03" W			
4	989.56'	S 89° 54' 16" E			
5	164.91'	N 89° 52' 46" W			
6	330.41'	N 0° 03' 46" W			
7	369.72'	N 26° 32' 52" W			
8	2,044.49'	N 14° 03' 20" W			
9	1,322.32'	N 0° 03' 15" W			
10	657.65'	N 89° 54' 34" W			
11	495.53'	N 0° 02' 45" W			
12	736.42'	N 63° 25' 52" E			
13	521.86'	N 18° 20' 39" E			

Field Book No. A-2896

Date: 11-14-68

CERTIFICATE OF SURVEY

I HEREBY CERTIFY THAT THE ABOVE PLAT IS A TRUE AND CORRECT REPRESENTATION OF THE SURVEY MADE IN SECTION 34, T14N, R19E

SULLIVAN AND GILBERT INC.

Under the Supervision of

U.S. ARMY ENGINEER DISTRICT, TULSA  
CORPS OF ENGINEERS

LEGEND

- △ Monument
- Original Corner
- Iron Pin
- HWY R/W MARKER

*Sullivan A. Gilbert*  
REGISTERED PROFESSIONAL ENGINEER