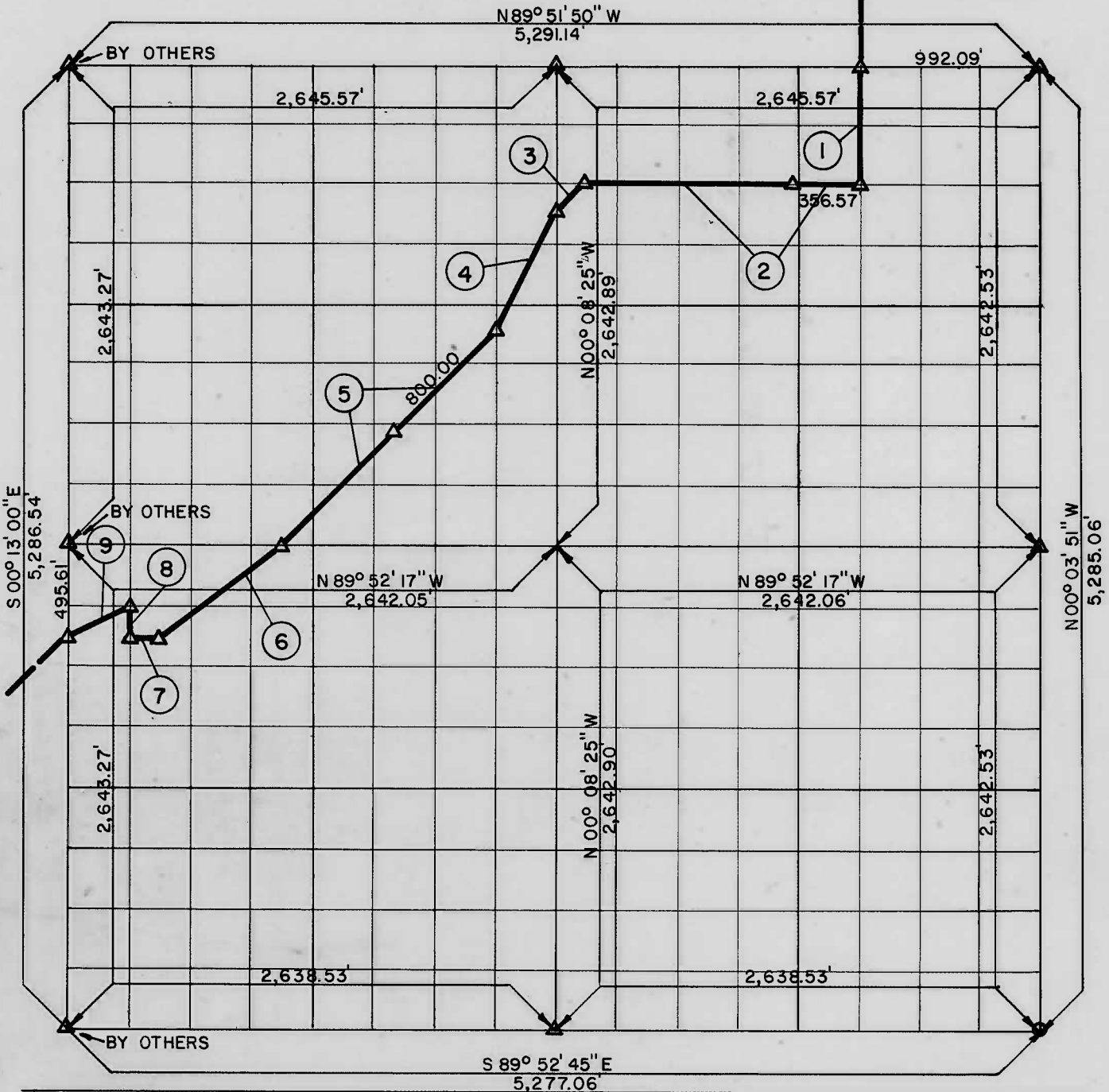


**PARTIAL BOUNDARY SURVEYS
AREA "B-1"
LOCK AND DAM NO. 16, WEBBERS FALLS,
ARKANSAS RIVER, OKLAHOMA**

Performed Under Contract Number DACW 56 - 68 - C - 0269

SEC. 36 T 14 N, R 19 E COUNTY, MUSKOGEE



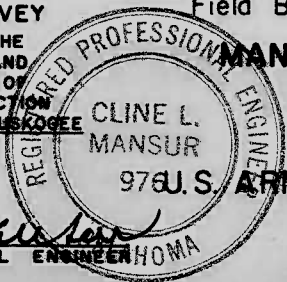
Course No.	Distance	Bearing	Course No.	Distance	Bearing
1	660.66	S 00° 05' 33" E	8	165.21	N 00° 12' 24" W
2	1487.63	N 89° 51' 57" W	9	368.35	S 63° 28' 42" W
3	233.12	S 45° 01' 00" W			
4	737.35	S 26° 29' 07" W			
5	1630.98	S 44° 58' 47" W			
6	823.50	S 53° 07' 35" W			
7	165.08	N 89° 52' 24" W			

CERTIFICATE OF SURVEY

HEREBY CERTIFY THAT THE ABOVE PLAT IS A TRUE AND CORRECT REPRESENTATION OF THE SURVEY MADE IN SECTION 36, T 14 N, R 19 E, MUSKOGEE COUNTY, OKLAHOMA.

Field Book No. A-2944

Date NOVEMBER, 1968



**MANSUR-STEELE-WILLIAMS, INC.
CONSULTING ENGINEERS**

Under the Supervision of
**U.S. ARMY ENGINEER DISTRICT, TULSA
CORPS OF ENGINEERS**

LEGEND

- △ MONUMENT
- ORIGINAL CORNER
- IRON PIN

Cline L. Mansur
REGISTERED PROFESSIONAL ENGINEER
OKLAHOMA