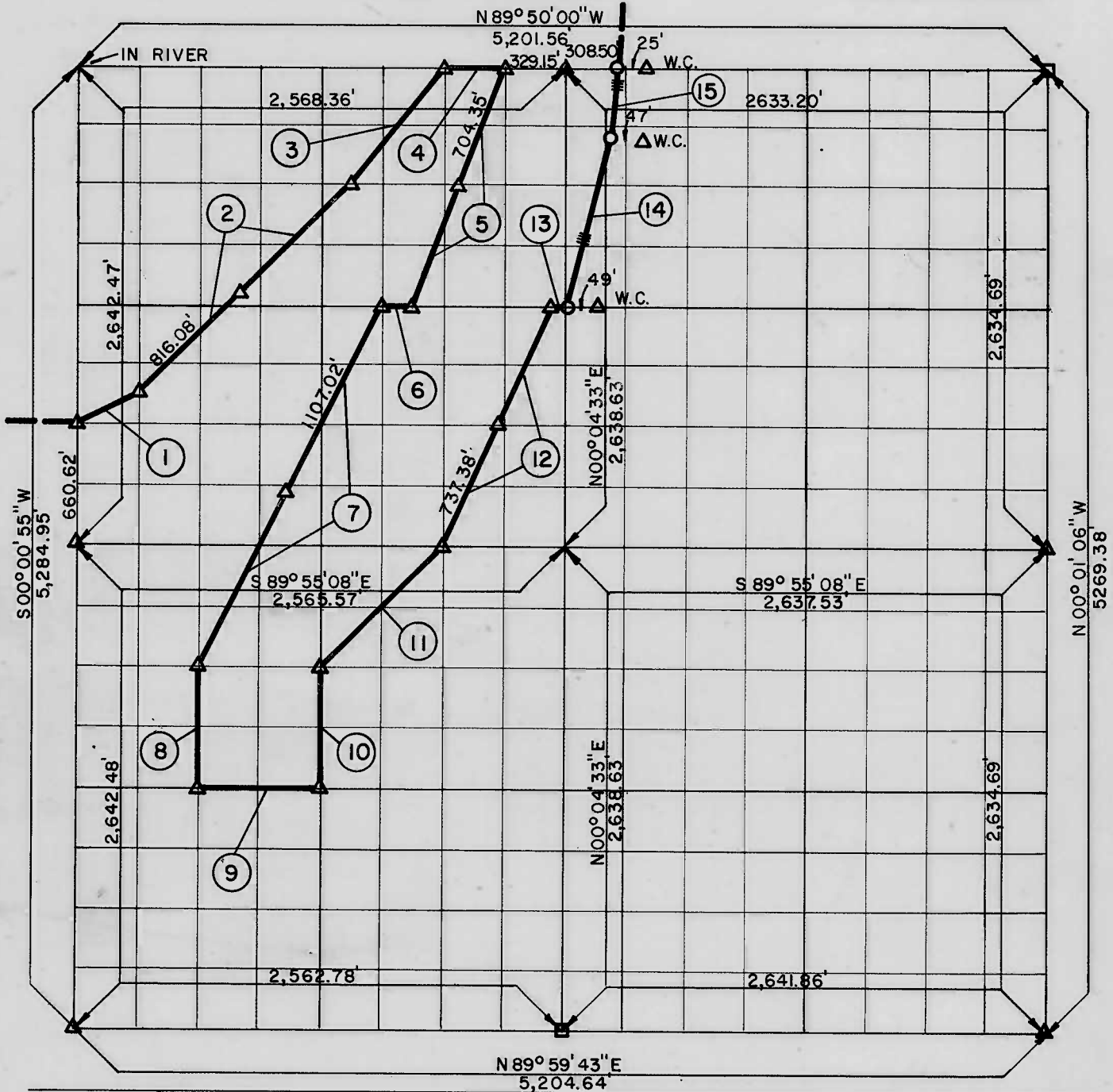


PARTIAL BOUNDARY SURVEYS
AREA "B-1"
LOCK AND DAM NO. 16, WEBBERS FALLS,
ARKANSAS RIVER, OKLAHOMA

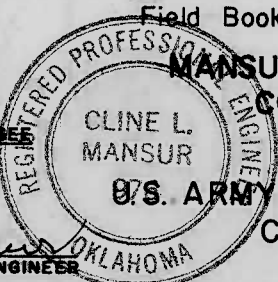
Performed Under Contract Number DACW 56 - 68 - C - 0269

SEC. 18 T 14 N, R 20 E COUNTY, MUSKOGEE



Course No.	Distance	Bearing	Course No.	Distance	Bearing
1	308.08	N 57° 41' 28" E	8	660.40	S 00° 07' 51" W
2	1632.16	N 45° 03' 20" E	9	659.57	S 89° 57' 43" E
3	823.90	N 36° 55' 28" E	10	660.15	N 00° 06' 45" E
4	329.15	S 89° 50' 00" E	11	933.14	N 45° 03' 13" E
5	1408.70	S 20° 36' 55" W	12	1474.77	N 26° 37' 26" E
6	164.68	N 89° 52' 34" W	13	21.98	S 89° 52' 34" E
7	2214.04	S 26° 38' 12" W	14	959.28	N 12° 48' 30" E
			15	390.44	N 10° 55' 33" E

CERTIFICATE OF SURVEY
I HEREBY CERTIFY THAT THE ABOVE PLAT IS A TRUE AND CORRECT REPRESENTATION OF THE SURVEY MADE IN SECTION 18, T 14 N, R 20 E, MUSKOGEE COUNTY, OKLAHOMA.



Field Book No. A-2943 Date NOVEMBER, 1968
MANSUR-STEELE-WILLIAMS, INC.
CONSULTING ENGINEERS

Under the Supervision of
U.S. ARMY ENGINEER DISTRICT, TULSA
CORPS OF ENGINEERS

LEGEND
△ MONUMENT
□ ORIGINAL CORNER
○ IRON PIN

Cline L. Mansur
REGISTERED PROFESSIONAL ENGINEER