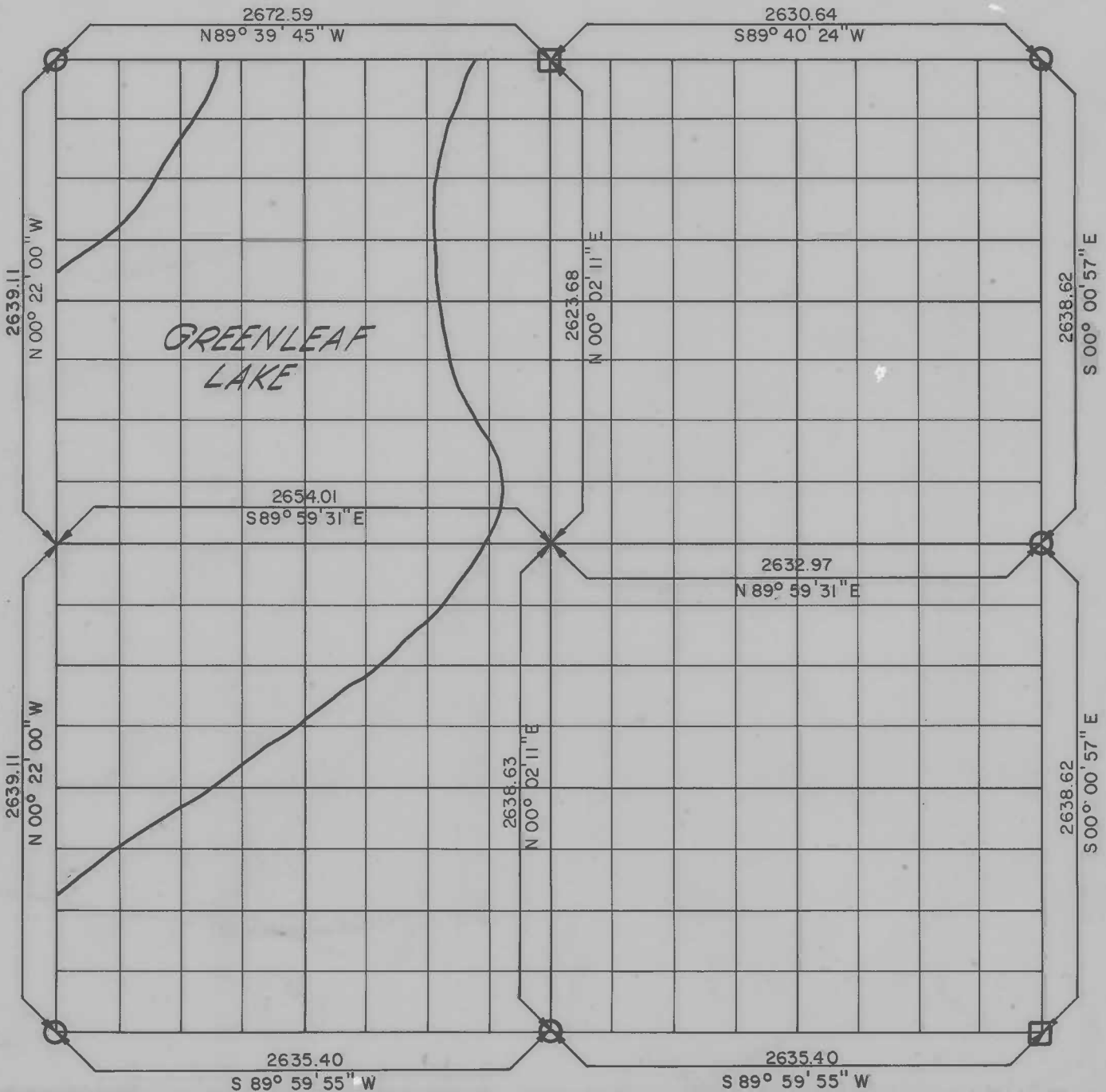


PARTIAL BOUNDARY SURVEYS  
WEBBERS FALL LOCK AND DAM 16  
ARKANSAS RIVER, OKLAHOMA

Performed Under Contract Number DACW 56-68-C-0266

SEC 36 T-14 -N R-20-E COUNTY MUSKOGEE



Course No.	Distance	Bearing	Course No.	Distance	Bearing

Field Book No. A2927 Date: 12/2/68

CERTIFICATE OF SURVEY  
HEREBY CERTIFY THAT THE ABOVE PLAT IS A TRUE AND CORRECT REPRESENTATION OF THE SURVEY MADE IN SECTION 36 T-14-N, R-20-E MUSKOGEE COUNTY, OKLAHOMA

HOLWAY ENGINEERS, INC.  
Under the Supervision of  
U.S. ARMY ENGINEER DISTRICT, TULSA  
CORPS OF ENGINEERS

LEGEND  
△ MONUMENT  
□ ORIGINAL CORNER  
○ IRON PIN

*Handwritten Signature*  
REGISTERED PROFESSIONAL ENGINEER