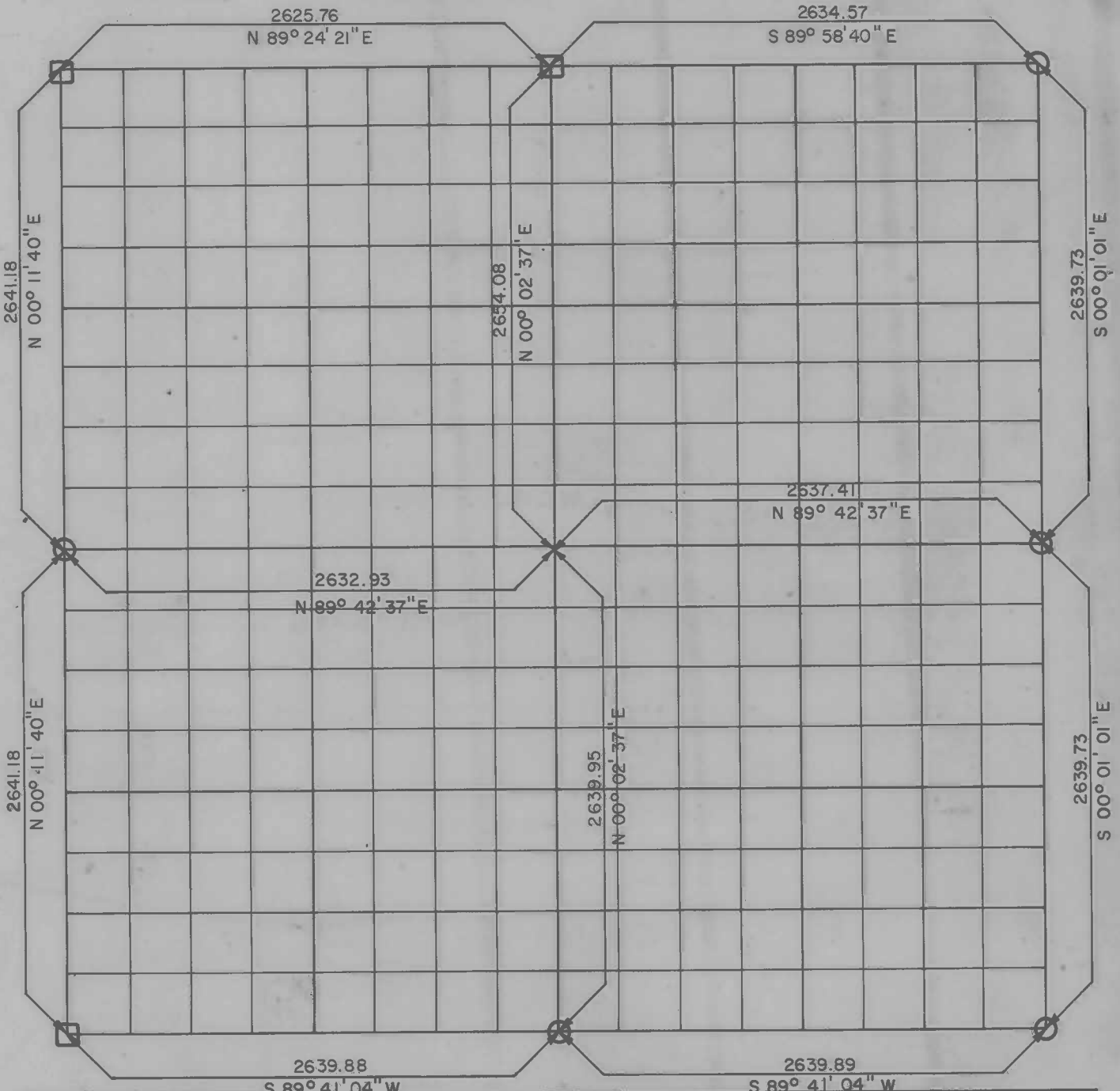


**PARTIAL BOUNDARY SURVEYS
WEBBERS FALL LOCK AND DAM 16
ARKANSAS RIVER, OKLAHOMA**

Performed Under Contract Number DACW 56-68-C-0266

SEC 8 T-14-N R-20-E COUNTY MUSKOGEE



Course No.	Distance	Bearing	Course No.	Distance	Bearing

CERTIFICATE OF SURVEY

Field Book No. A 2918 Date: 12/2/68

HEREBY CERTIFY THAT THE ABOVE PLAT IS A TRUE AND CORRECT REPRESENTATION OF THE SURVEY MADE IN SECTION 8, T-14-N, R-20-E, MUSKOGEE COUNTY, OKLAHOMA.

HOLWAY ENGINEERS, INC.
Under the Supervision of
**U.S. ARMY ENGINEER DISTRICT, TULSA
CORPS OF ENGINEERS**

LEGEND
△ MONUMENT
□ ORIGINAL CORNER
○ IRON PIN

Shull Co.
REGISTERED PROFESSIONAL ENGINEER