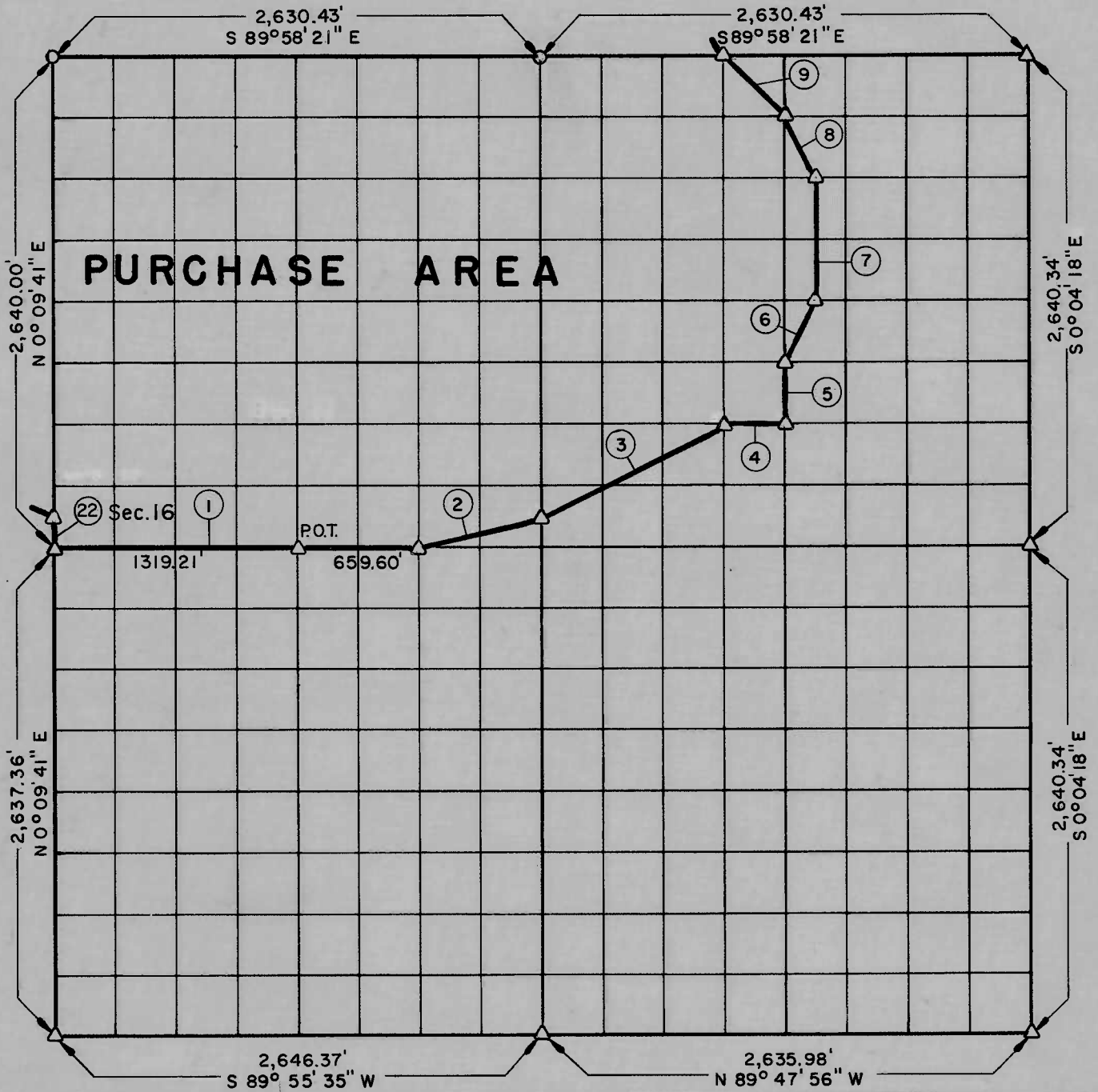


PARTIAL BOUNDARY SURVEYS
WEBBERS FALLS LOCK & DAM NO. 16
ARKANSAS RIVER, OKLAHOMA

Performed Under Contract Number DACW 56-75-C-0064

SEC. 15 T 15 N R 19 E COUNTY MUSKOGEE



Course No.	Distance	Bearing	Course No.	Distance	Bearing
1	1,978.81'	S 89° 58' 08" E			
2	679.81'	N 75° 59' 00" E			
3	1,103.99'	N 63° 23' 21" E			
4	329.06'	S 89° 58' 11" E			
5	330.03'	N -0° 02' 30" W			
6	368.60'	N 26° 28' 23" E			
7	660.06'	N -0° 02' 44" W			
8	368.91'	N 26° 30' 49" W			
9	466.15'	N 44° 54' 02" W			

Field Book No. A-3298 , Date 6-6-75

CERTIFICATE OF SURVEY

I HEREBY CERTIFY THAT THE ABOVE PLAT IS A TRUE AND CORRECT REPRESENTATION OF THE SURVEY MADE IN SECTION 15 , T 15 N , R 19 E , MUSKOGEE COUNTY, OKLAHOMA

Dave R. Sutton
 REGISTERED LAND SURVEYOR

K.N. COX & ASSOCIATES - ENGINEERS

Under the Supervision of

**U.S. ARMY ENGINEER DISTRICT, TULSA
 CORPS OF ENGINEERS**

SHEET 1 of 2

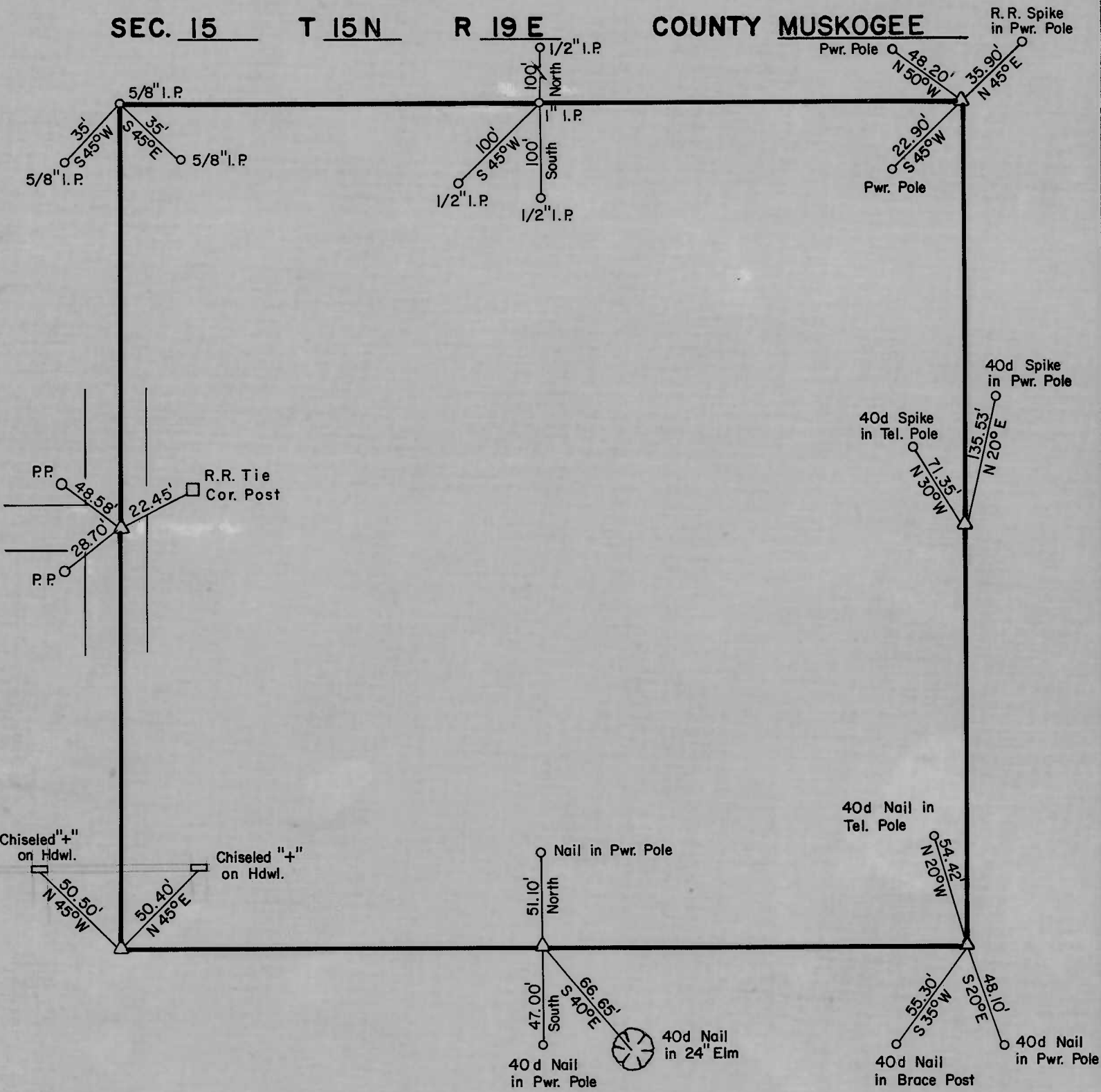
LEGEND

- △ MONUMENT
- ORIGINAL CORNER
- IRON PIN

PARTIAL BOUNDARY SURVEYS
WEBBERS FALLS LOCK & DAM NO. 16
ARKANSAS RIVER, OKLAHOMA

Performed Under Contract Number DACW 56-75-C-0064

SEC. 15 T 15 N R 19 E COUNTY MUSKOGEE



Field Book No. A-3298 , Date 6-6-75

K. N. COX & ASSOCIATES - ENGINEERS

Under the Supervision of

U.S. ARMY ENGINEER DISTRICT, TULSA
CORPS OF ENGINEERS

SHEET 2 of 2

LEGEND

- △ MONUMENT
- ORIGINAL CORNER
- IRON PIN

